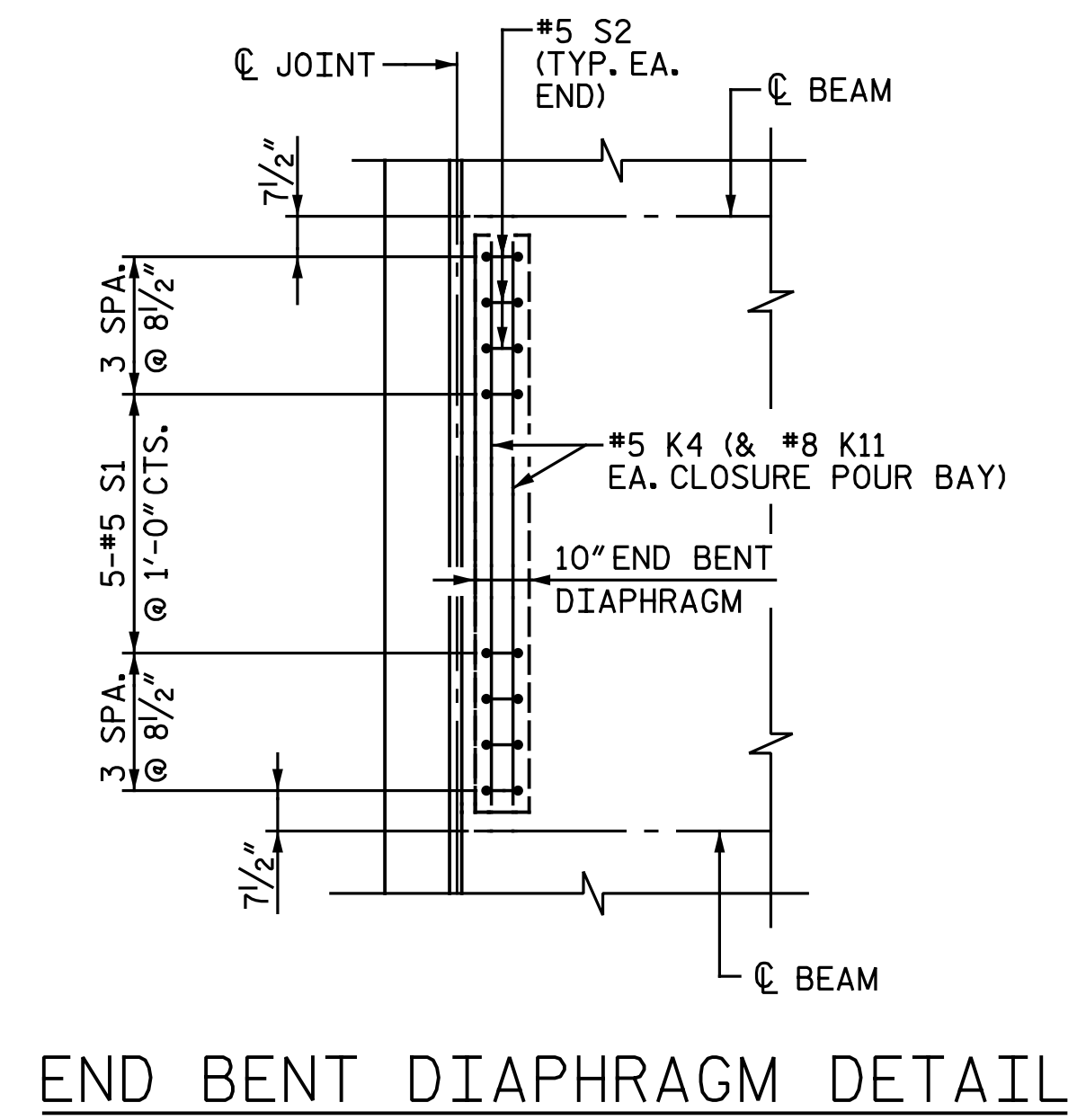


NOTES:
 FOR REINFORCING STEEL AND LOCATION OF TEMPORARY DRAIN BLOCKOUTS IN CONCRETE BARRIER RAIL, SEE "CONCRETE BARRIER RAIL" SHEET.
 FOR DECK POURING SEQUENCE AND LOCATION OF TRANSVERSE CONSTRUCTION JOINTS, SEE "BILL OF MATERIAL" SHEETS.
 FOR "TRANSVERSE CONST. JT. DETAIL", SEE SHEET 2 OF 9.
 * #6 B4 BARS SHALL BE PLACED BETWEEN #5 B3 BARS SPACED AT 6" CTS. AND STAGGERED AS SHOWN.

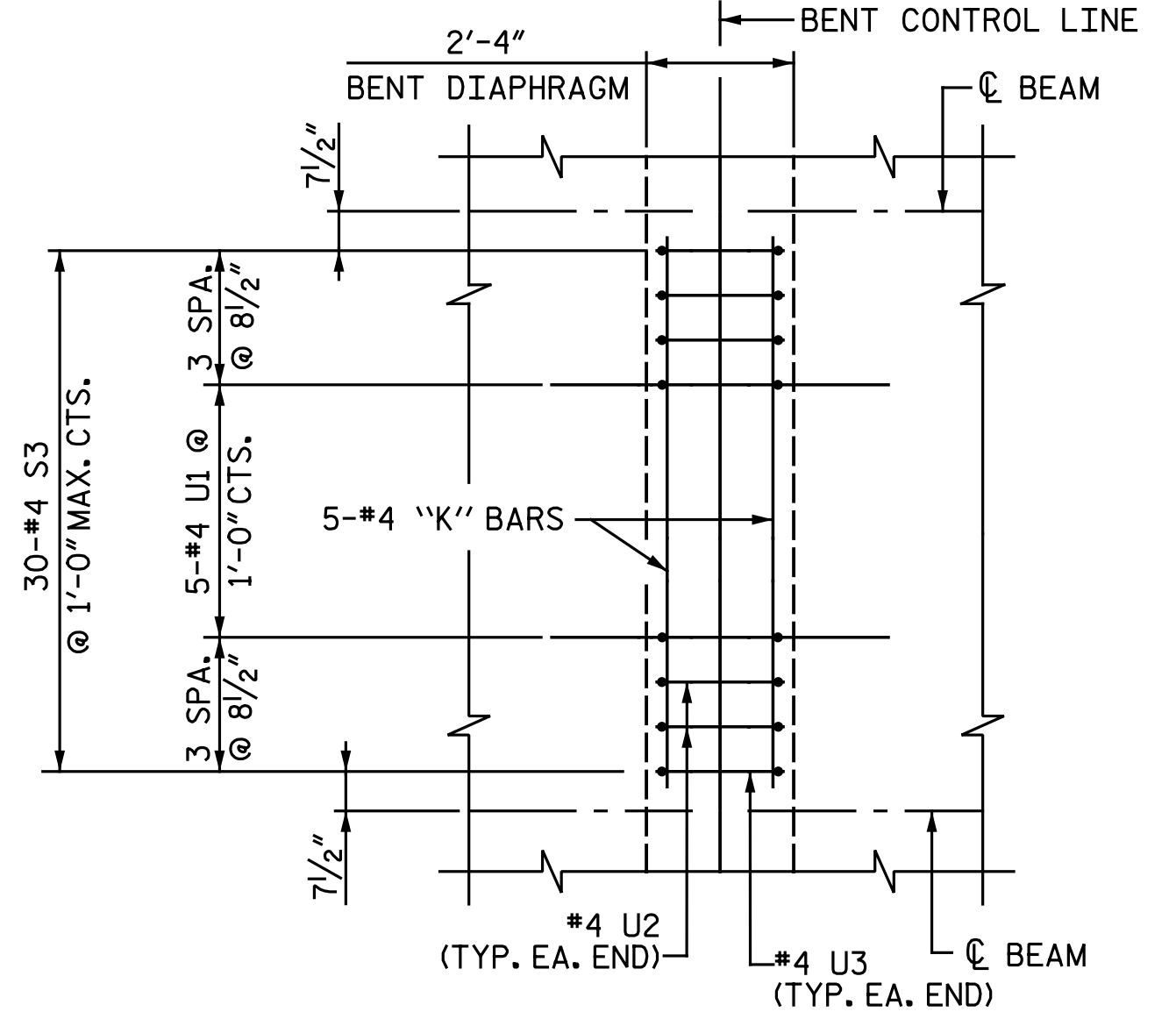
PLAN OF SPAN
 STAGE I (LEFT SIDE)

SPLICE LENGTHS		
BAR SIZE	EPOXY COATED	UNCOATED
#4	2'-0"	1'-9"
#5	2'-6"	2'-2"
#6	3'-0"	N/A
#4 D3	N/A	2'-5"
#4 K10	N/A	2'-5"

PROJECT NO. I-5986B
JOHNSTON COUNTY
 STATION: 1260+34.00 -L-
 SHEET 1 OF 9



END BENT DIAPHRAGM DETAIL

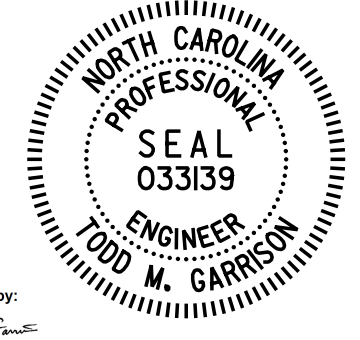


BENT DIAPHRAGM DETAIL

DRAWN BY : J. R. METZ DATE : 4-29-19
 CHECKED BY : I. M. GARRISON DATE : 5-13-19

END BENT 1 SHOWN, END BENT 2 SIMILAR
 "K" BARS OVER BEAMS NOT SHOWN FOR CLARITY
 (TYP. EA. BAY INCLUDING CLOSURE POUR BAY)

BENT 1 SHOWN, BENT 2 SIMILAR
 "K" BARS AT © DIAPHRAGM NOT SHOWN FOR CLARITY
 (TYP. EA. BAY INCLUDING CLOSURE POUR BAY)



DocuSigned by:
 Todd M. Garrison
 41247833943266
 4/21/2020

DOCUMENT NOT CONSIDERED FINAL
 UNLESS ALL SIGNATURES COMPLETED

STATE OF NORTH CAROLINA
 DEPARTMENT OF TRANSPORTATION
 RALEIGH
 SUPERSTRUCTURE
 PLAN OF SPANS
 STAGE I
 (LEFT SIDE)

NO.	BY:	DATE:	REVISIONS			SHEET NO. SI-12
			NO.	BY:	DATE:	
1			3			TOTAL SHEETS
2			4			57

Michael Baker International
 Michael Baker Engineering
 8000 Regency Parkway, Suite 600
 Cary, North Carolina 27518
 NC License No.: F-1084