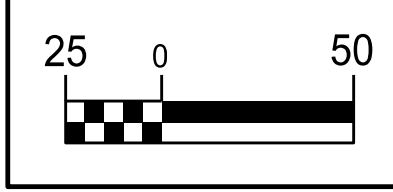


5/14/2011

THE ESTIMATED QUANTITY OF D.I. WATER PIPE FITTINGS ON THIS PLAN SHEET IS 3,300 POUNDS. THE ACTUAL QUANTITY AND TYPE OF FITTINGS WILL VARY BASED ON FIELD CONDITIONS.

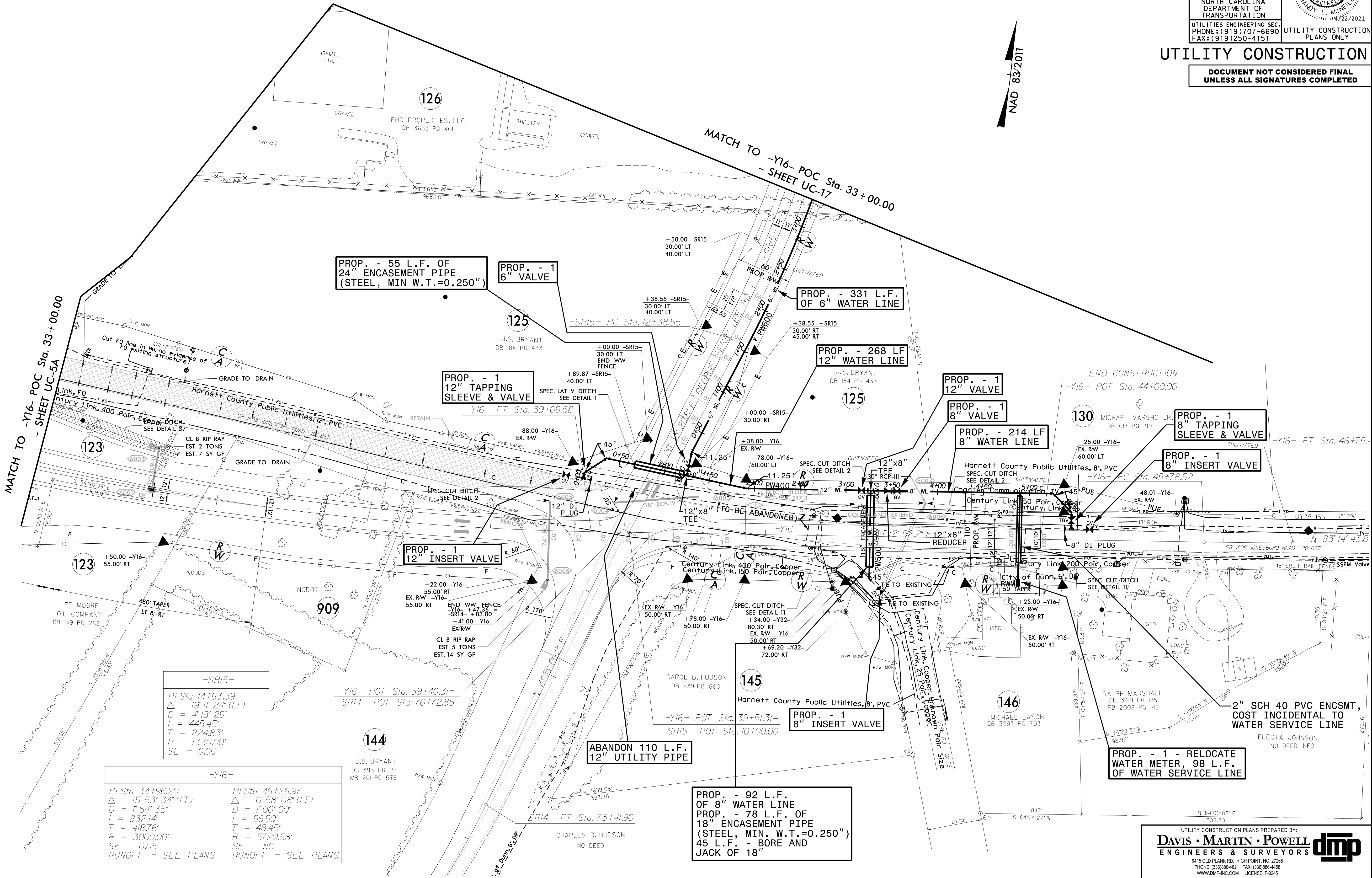


PROJECT REFERENCE NO.	SHEET NO.
I-5883	UC-16
DESIGNED BY: DMP	
DRAWN BY: DMP	
CHECKED BY: DMP	
APPROVED BY:	
REVISED:	
NORTH CAROLINA DEPARTMENT OF TRANSPORTATION	
UTILITIES ENGINEERING SEC. PHONE: (919) 707-6690 FAX: (919) 250-4151	UTILITY CONSTRUCTION PLANS ONLY

UTILITY CONSTRUCTION

DOCUMENT NOT CONSIDERED FINAL UNLESS ALL SIGNATURES COMPLETED

NAD 83/2011



MATCH TO -Y16- POC Sta. 33+00.00
- SHEET UC-5A

MATCH TO -Y16- POC Sta. 33+00.00
- SHEET UC-17

MATCH TO -Y16- POC Sta. 33+00.00
- SHEET UC-5A

END CONSTRUCTION
-Y16- POT Sta. 44+00.00

-Y16- PT Sta. 46+75.5

-Y16- PC Sta. 45+78.52

-Y16- POT Sta. 39+51.31=

-SR15- POT Sta. 10+00.00

-SR14- PT Sta. 73+41.90

-SR15-

PI Sta 14+63.39	PI Sta 46+26.97
Δ = 19° 11' 24" (LT)	Δ = 0° 58' 08" (LT)
D = 4' 18" 29"	D = 1° 00' 00"
L = 445.45'	L = 96.90'
T = 224.83'	T = 48.45'
R = 1330.00'	R = 5729.58'
SE = 0.06	SE = NC

-Y16-

PI Sta 34+96.20	PI Sta 46+26.97
Δ = 15° 53' 34" (LT)	Δ = 0° 58' 08" (LT)
D = 1° 54' 35"	D = 1° 00' 00"
L = 832.14'	L = 96.90'
T = 418.76'	T = 48.45'
R = 3000.00'	R = 5729.58'
SE = 0.05	SE = NC
RUNOFF = SEE PLANS	RUNOFF = SEE PLANS