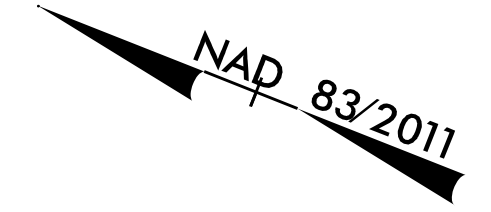
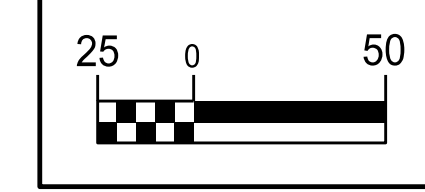


5/14/2019



PROJECT REFERENCE NO.	SHEET NO.
I-5883	UC-15
DESIGNED BY: DMP	
DRAWN BY: DMP	
CHECKED BY: DMP	
APPROVED BY:	
REVISED:	
NORTH CAROLINA DEPARTMENT OF TRANSPORTATION	UTILITY CONSTRUCTION PLANS ONLY
UTILITIES ENGINEERING SEC. PHONE: (919) 707-6690 FAX: (919) 250-4151	

**UTILITY CONSTRUCTION**

**DOCUMENT NOT CONSIDERED FINAL UNLESS ALL SIGNATURES COMPLETED**

**-SR17-**

PI Sta 13+90.18	PI Sta 18+33.27
$\Delta = 90^{\circ} 00' 00.0"$ (LT)	$\Delta = 17^{\circ} 15' 19.8"$ (RT)
$D = 47^{\circ} 44' 47.3"$	$D = 2^{\circ} 27' 32.6"$
$L = 188.50'$	$L = 701.72'$
$T = 120.00'$	$T = 353.53'$
$R = 120.00'$	$R = 2330.00'$
$SE = 0.04$	$SE = 0.04$
$RUNOFF = SEE PLANS$	$RUNOFF = SEE PLANS$

**-Y17-**

PI Sta 35+08.75
$\Delta = 11^{\circ} 32' 41"$ (RT)
$D = 3^{\circ} 19' 52"$
$L = 346.57'$
$T = 173.87'$
$R = 1720.00'$
$SE = 0.04$
$RUNOFF = SEE PLANS$

**140**

ROBIN WHITLEY HOOD II  
DB 2959 PG 799  
TRACT 3

**139**

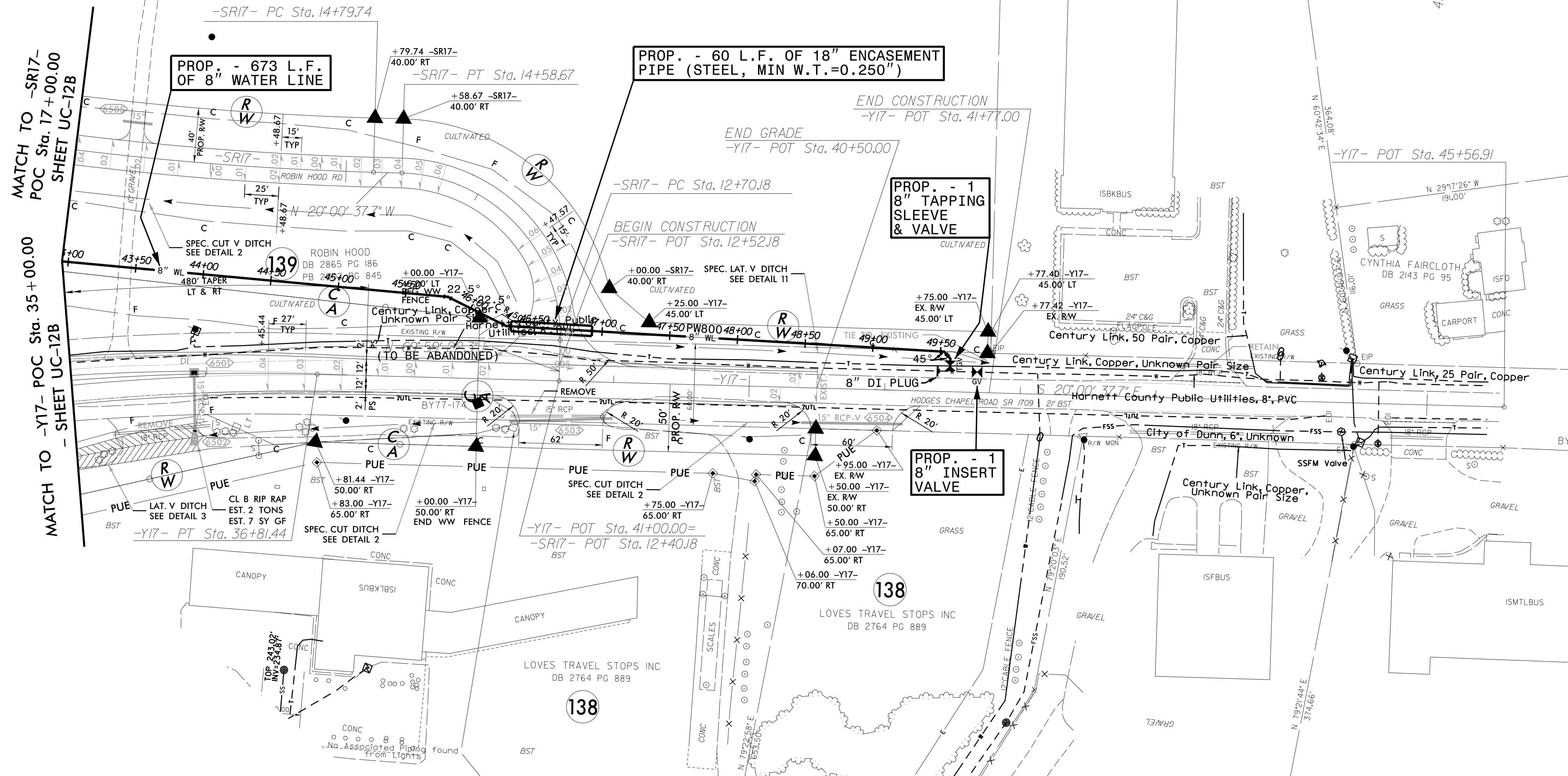
ROBIN HOOD  
DB 2865 PG 186  
PB 2002 PG 845

**239**

PARTNER PROPERTIES LLC  
DB 2188 PG 458

**NO CLAIM**

REVISIONS



THE ESTIMATED QUANTITY OF D.I. WATER PIPE FITTINGS ON THIS PLAN SHEET IS 485 POUNDS. THE ACTUAL QUANTITY AND TYPE OF FITTINGS WILL VARY BASED ON FIELD CONDITIONS.

UTILITY CONSTRUCTION PLANS PREPARED BY:

**DAVIS • MARTIN • POWELL**  
ENGINEERS & SURVEYORS

6415 OLD PLANK RD., HIGH POINT, NC 27265  
PHONE: (336) 886-4821 FAX: (336) 886-4458  
WWW.DMP-INC.COM LICENSE: F-0245