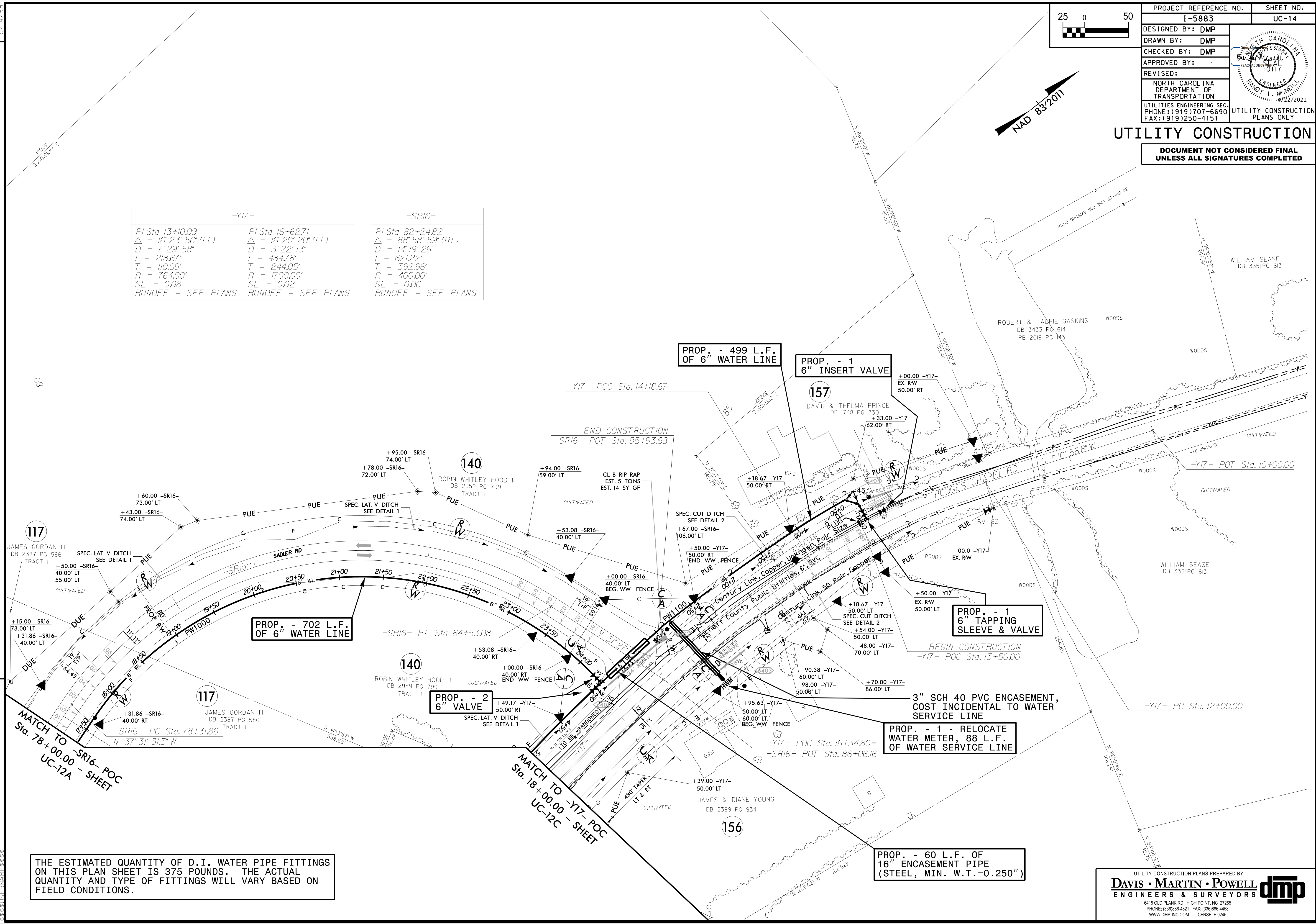


PROJECT REFERENCE NO.	SHEET NO.
I-5883	UC-14
DESIGNED BY: DMP	
DRAWN BY: DMP	
CHECKED BY: DMP	
APPROVED BY:	
REVISED:	
NORTH CAROLINA DEPARTMENT OF TRANSPORTATION	UTILITY CONSTRUCTION PLANS ONLY
UTILITIES ENGINEERING SEC. PHONE: (919) 707-6690 FAX: (919) 250-4151	

UTILITY CONSTRUCTION
DOCUMENT NOT CONSIDERED FINAL UNLESS ALL SIGNATURES COMPLETED

-Y17-		-SR16-
PI Sta 13+10.09	PI Sta 16+62.71	PI Sta 82+24.82
$\Delta = 16^{\circ} 23' 56"$ (LT)	$\Delta = 16^{\circ} 20' 20"$ (LT)	$\Delta = 88^{\circ} 58' 59"$ (RT)
D = 7' 29' 58"	D = 3' 22' 13"	D = 14' 19' 26"
L = 218.67'	L = 484.78'	L = 621.22'
T = 110.09'	T = 244.05'	T = 392.96'
R = 764.00'	R = 1700.00'	R = 400.00'
SE = 0.08	SE = 0.02	SE = 0.06
RUNOFF = SEE PLANS	RUNOFF = SEE PLANS	RUNOFF = SEE PLANS

REVISIONS



THE ESTIMATED QUANTITY OF D.I. WATER PIPE FITTINGS ON THIS PLAN SHEET IS 375 POUNDS. THE ACTUAL QUANTITY AND TYPE OF FITTINGS WILL VARY BASED ON FIELD CONDITIONS.

PROP. - 60 L.F. OF 16" ENCASEMENT PIPE (STEEL, MIN. W.T.=0.250")