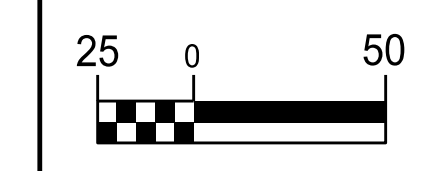


5/14/2019

THE ESTIMATED QUANTITY OF D.I. WATER PIPE FITTINGS ON THIS PLAN SHEET IS 595 POUNDS. THE ACTUAL QUANTITY AND TYPE OF FITTINGS WILL VARY BASED ON FIELD CONDITIONS.

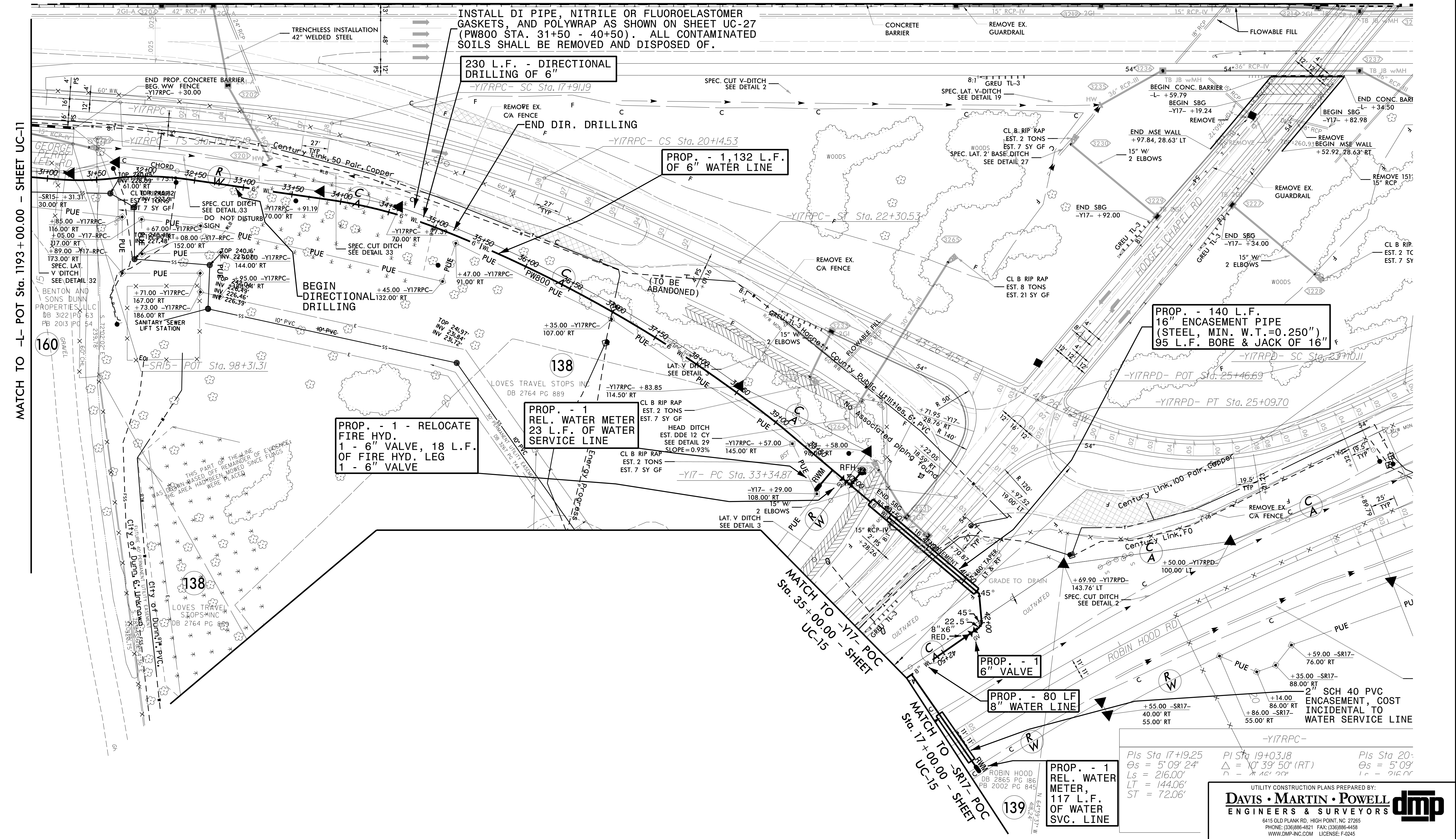


PROJECT REFERENCE NO.	SHEET NO.
I-5883	UC-12B
DESIGNED BY: DMP	
DRAWN BY: DMP	
CHECKED BY: DMP	
APPROVED BY:	
REVISED:	UTILITY CONSTRUCTION PLANS ONLY
NORTH CAROLINA DEPARTMENT OF TRANSPORTATION UTILITIES ENGINEERING SEC. PHONE: (919) 707-6690 FAX: (919) 250-4151	

UTILITY CONSTRUCTION

DOCUMENT NOT CONSIDERED FINAL UNLESS ALL SIGNATURES COMPLETED

MATCH TO -L- SHEET UC-12A



INSTALL DI PIPE, NITRILE OR FLUOROELASTOMER GASKETS, AND POLYWRAP AS SHOWN ON SHEET UC-27 (PW800 STA. 31+50 - 40+50). ALL CONTAMINATED SOILS SHALL BE REMOVED AND DISPOSED OF.

230 L.F. - DIRECTIONAL DRILLING OF 6"

PROP. - 1,132 L.F. OF 6" WATER LINE

PROP. - 140 L.F. 16" ENCASEMENT PIPE (STEEL, MIN. W.T.=0.250") 95 L.F. BORE & JACK OF 16"

PROP. - 1 - RELOCATE FIRE HYD. 1 - 6" VALVE, 18 L.F. OF FIRE HYD. LEG 1 - 6" VALVE

PROP. - 1 REL. WATER METER 23 L.F. OF WATER SERVICE LINE

PROP. - 1 6" VALVE

PROP. - 80 LF 8" WATER LINE

PROP. - 1 REL. WATER METER, 117 L.F. OF WATER SVC. LINE

MATCH TO -L- POT Sta. 1193+00.00 - SHEET UC-11

MATCH TO -Y17- POC Sta. 35+00.00 - SHEET UC-15

MATCH TO -SR17- POC Sta. 17+00.00 - SHEET UC-15

Pls Sta. 17+19.25
 $\Theta s = 5^{\circ}09'24"$
 $Ls = 216.00'$
 $LT = 144.06'$
 $ST = 72.06'$

Pls Sta. 19+03.18
 $\Delta = 10^{\circ}39'50"$ (RT)
 $L = 161.20'$
 $\Theta s = 5^{\circ}09'16"$
 $L = 216.00'$

Pls Sta. 20+...
 $\Theta s = 5^{\circ}09'16"$
 $L = 216.00'$