

PROJECT REFERENCE NO.	SHEET NO.
I-5883	UC-11
DESIGNED BY: DMP	
DRAWN BY: DMP	
CHECKED BY: DMP	
APPROVED BY:	
REVISED:	
NORTH CAROLINA DEPARTMENT OF TRANSPORTATION	
UTILITIES ENGINEERING SEC. PHONE: (919) 707-6690 FAX: (919) 250-4151	UTILITY CONSTRUCTION PLANS ONLY

UTILITY CONSTRUCTION

DOCUMENT NOT CONSIDERED FINAL UNLESS ALL SIGNATURES COMPLETED

-L-

PI Sta 1177+01.90 Δ = 9°16'49" (LT) D = 0°29'30" L = 1887.52' T = 945.83' R = 11653.38' SE = 0.025 RUNOFF = SEE PLANS	PIs Sta 1186+92.92 Os = 0°21'50" Ls = 148.00' LT = 98.67' ST = 49.33'
--	---

-Y17RPB-

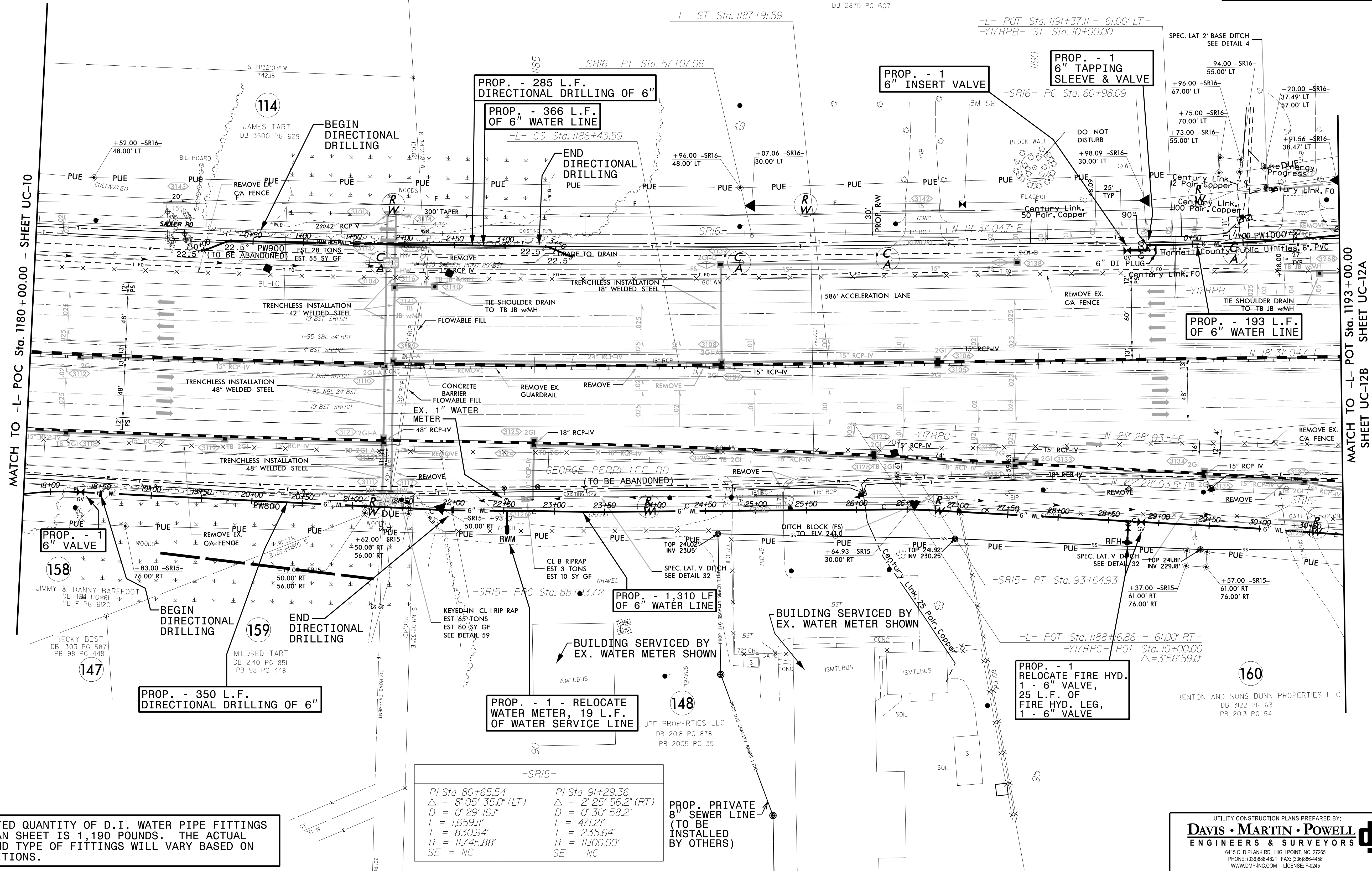
PIs Sta 11+26.02 Os = 2°58'30" Ls = 189.00' LT = 126.02' ST = 63.02'
--

-SR16-

PI Sta 47+03.08 Δ = 10°00'29" (LT) D = 0°29'50" L = 2013.09' T = 1009.11' R = 11525.00' SE = 0.02	PI Sta 65+09.73 Δ = 23°13'21" (LT) D = 2°51'53" L = 810.62' T = 410.95' R = 2000.00' SE = 0.06
---	--

-SR15-

PI Sta 80+65.54 Δ = 8°05'35.0" (LT) D = 0°29'16.1" L = 1,659.11' T = 830.94' R = 11,745.88' SE = NC	PI Sta 91+29.36 Δ = 2°25'56.2" (RT) D = 0°30'58.2" L = 471.21' T = 235.64' R = 11,000.00' SE = NC
---	---



THE ESTIMATED QUANTITY OF D.I. WATER PIPE FITTINGS ON THIS PLAN SHEET IS 1,190 POUNDS. THE ACTUAL QUANTITY AND TYPE OF FITTINGS WILL VARY BASED ON FIELD CONDITIONS.