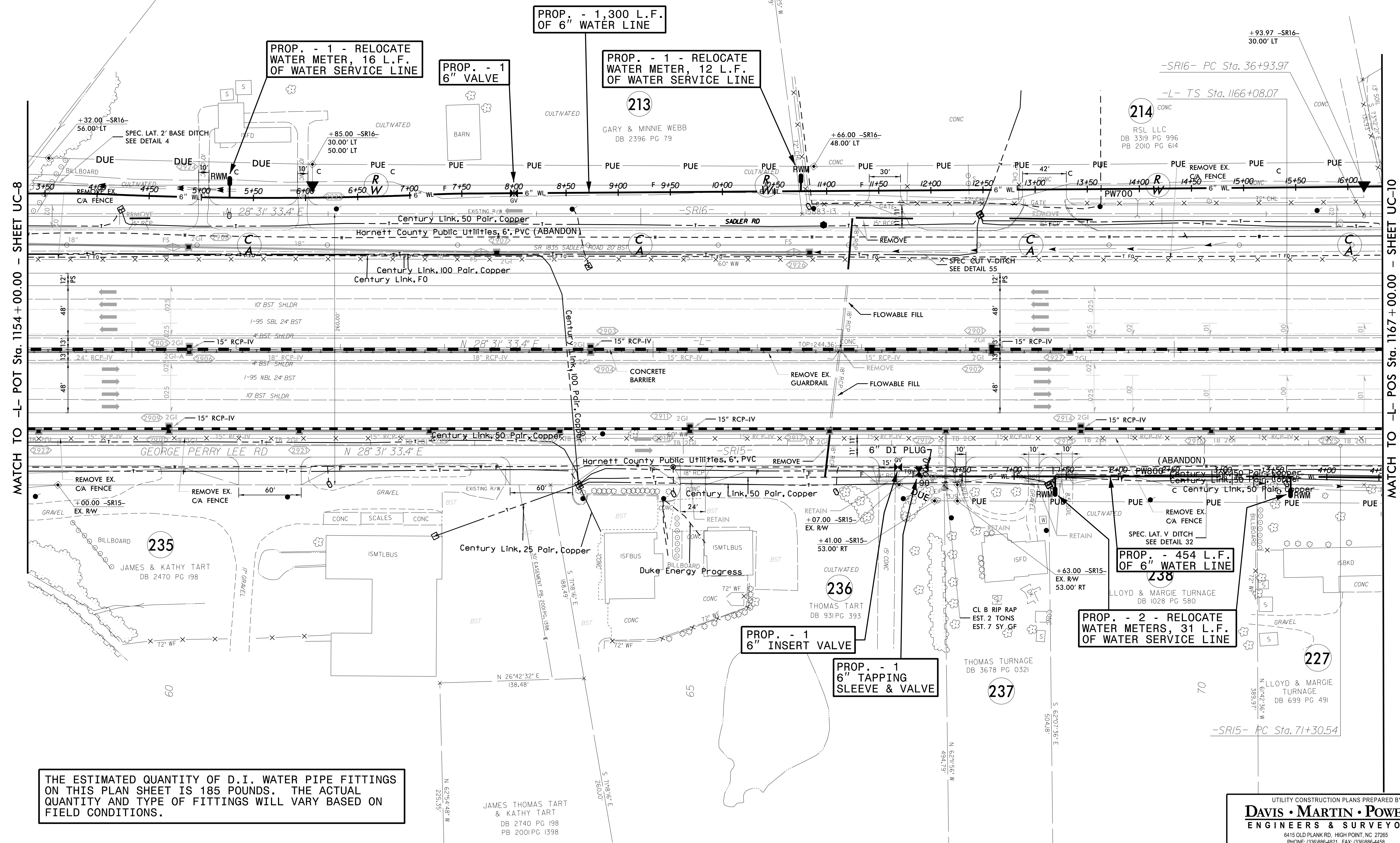


PROJECT REFERENCE NO.	SHEET NO.
I-5883	UC-9
DESIGNED BY: DMP	
DRAWN BY: DMP	
CHECKED BY: DMP	
APPROVED BY:	
REVISED:	
NORTH CAROLINA DEPARTMENT OF TRANSPORTATION	
UTILITIES ENGINEERING SEC. PHONE: (919) 707-6690 FAX: (919) 250-4151	UTILITY CONSTRUCTION PLANS ONLY

UTILITY CONSTRUCTION
DOCUMENT NOT CONSIDERED FINAL UNLESS ALL SIGNATURES COMPLETED

-SR16-
PI Sta 47+03.08
Δ = 10° 00' 29" (LT)
D = 0' 29' 50"
L = 2013.09'
T = 1009.11'
R = 11525.00'
SE = 0.06

-L-
PIs Sta 1167+06.74
Θs = 0' 21' 50"
Ls = 148.00'
LT = 98.67'
ST = 49.33'



THE ESTIMATED QUANTITY OF D.I. WATER PIPE FITTINGS ON THIS PLAN SHEET IS 185 POUNDS. THE ACTUAL QUANTITY AND TYPE OF FITTINGS WILL VARY BASED ON FIELD CONDITIONS.