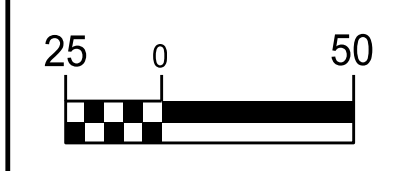


THE ESTIMATED QUANTITY OF D.I. WATER PIPE FITTINGS ON THIS PLAN SHEET IS 600 POUNDS. THE ACTUAL QUANTITY AND TYPE OF FITTINGS WILL VARY BASED ON FIELD CONDITIONS.

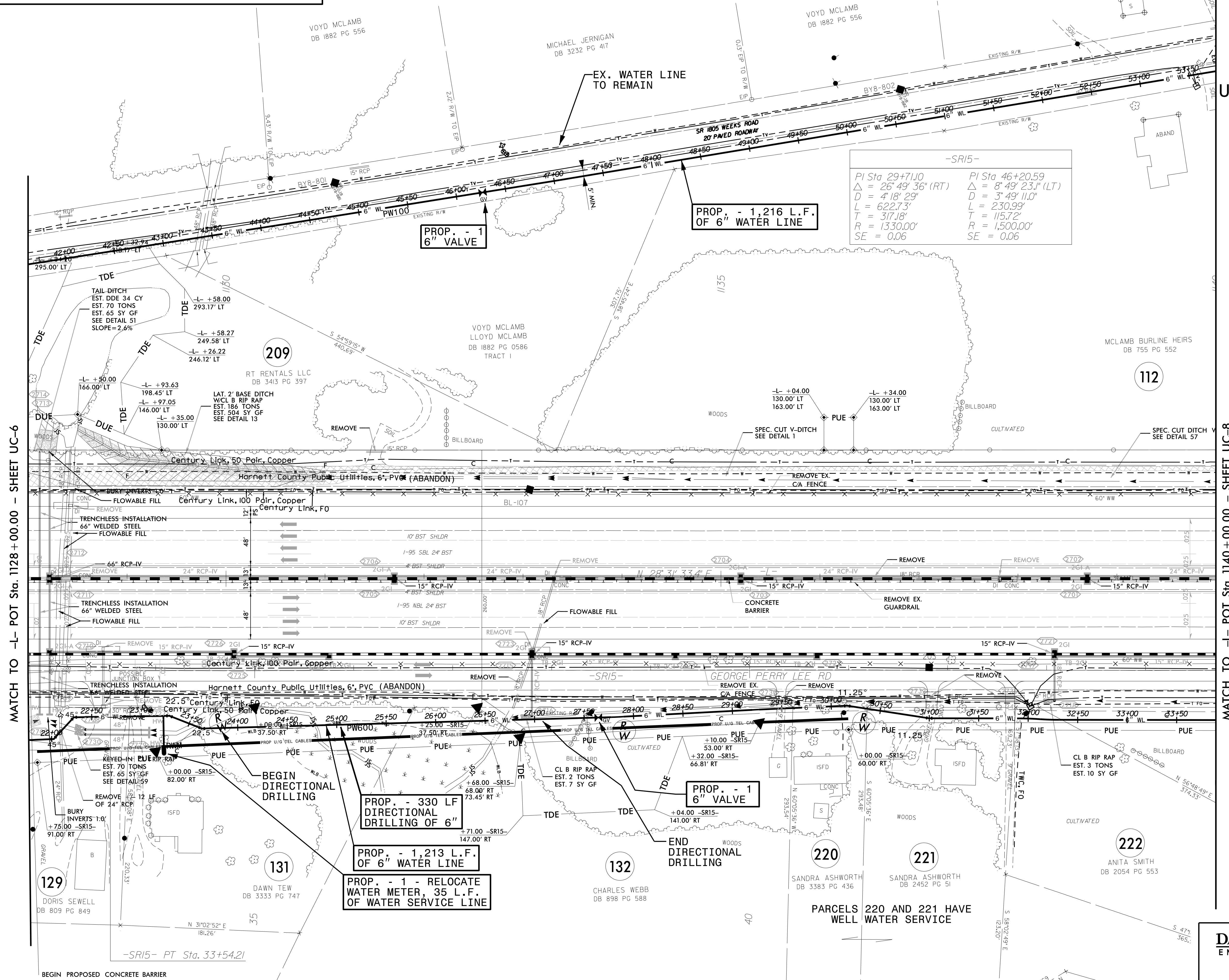


PROJECT REFERENCE NO.	I-5883
SHEET NO.	UC-7
DESIGNED BY:	DMP
DRAWN BY:	DMP
CHECKED BY:	DMP
APPROVED BY:	
REVISED:	
NORTH CAROLINA DEPARTMENT OF TRANSPORTATION	
UTILITY ENGINEERING SEC. PHONE: (919) 707-6690 FAX: (919) 250-4151	UTILITY CONSTRUCTION PLANS ONLY



# UTILITY CONSTRUCTION

DOCUMENT NOT CONSIDERED FINAL UNLESS ALL SIGNATURES COMPLETED



-SR15-

PI Sta 29+71.00	PI Sta 46+20.59
$\Delta = 26^\circ 49' 36" (RT)$	$\Delta = 8^\circ 49' 23" (LT)$
$D = 4' 18" 29"$	$D = 3' 49' 11.0"$
$L = 622.73'$	$L = 230.99'$
$T = 317.18'$	$T = 115.72'$
$R = 1330.00'$	$R = 1500.00'$
$SE = 0.06$	$SE = 0.06$

PROP. - 330 LF DIRECTIONAL DRILLING OF 6"

PROP. - 1,213 L.F. OF 6" WATER LINE

PROP. - 1 - RELOCATE WATER METER, 35 L.F. OF WATER SERVICE LINE

REVISIONS

MATCH TO -L- POT Sta. 1128+00.00 - SHEET UC-6

MATCH TO -L- POT Sta. 1140+00.00 - SHEET UC-8