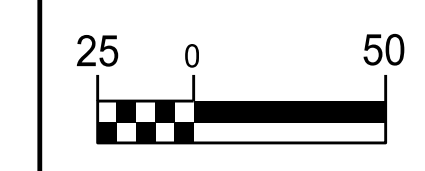
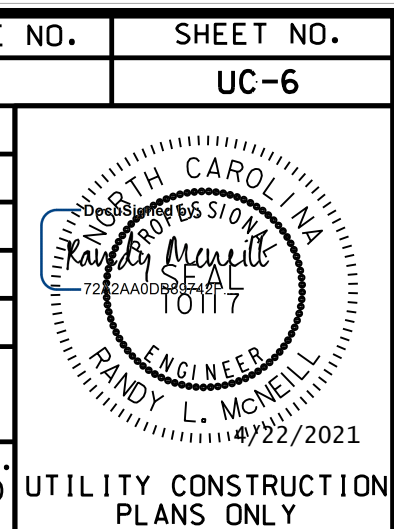


5/14/2019



PROJECT REFERENCE NO.	1-5883
SHEET NO.	UC-6
DESIGNED BY:	DMP
DRAWN BY:	DMP
CHECKED BY:	DMP
APPROVED BY:	
REVISED:	
NORTH CAROLINA DEPARTMENT OF TRANSPORTATION	
UTILITIES ENGINEERING SEC. PHONE: (919) 707-6690 FAX: (919) 250-4151	UTILITY CONSTRUCTION PLANS ONLY



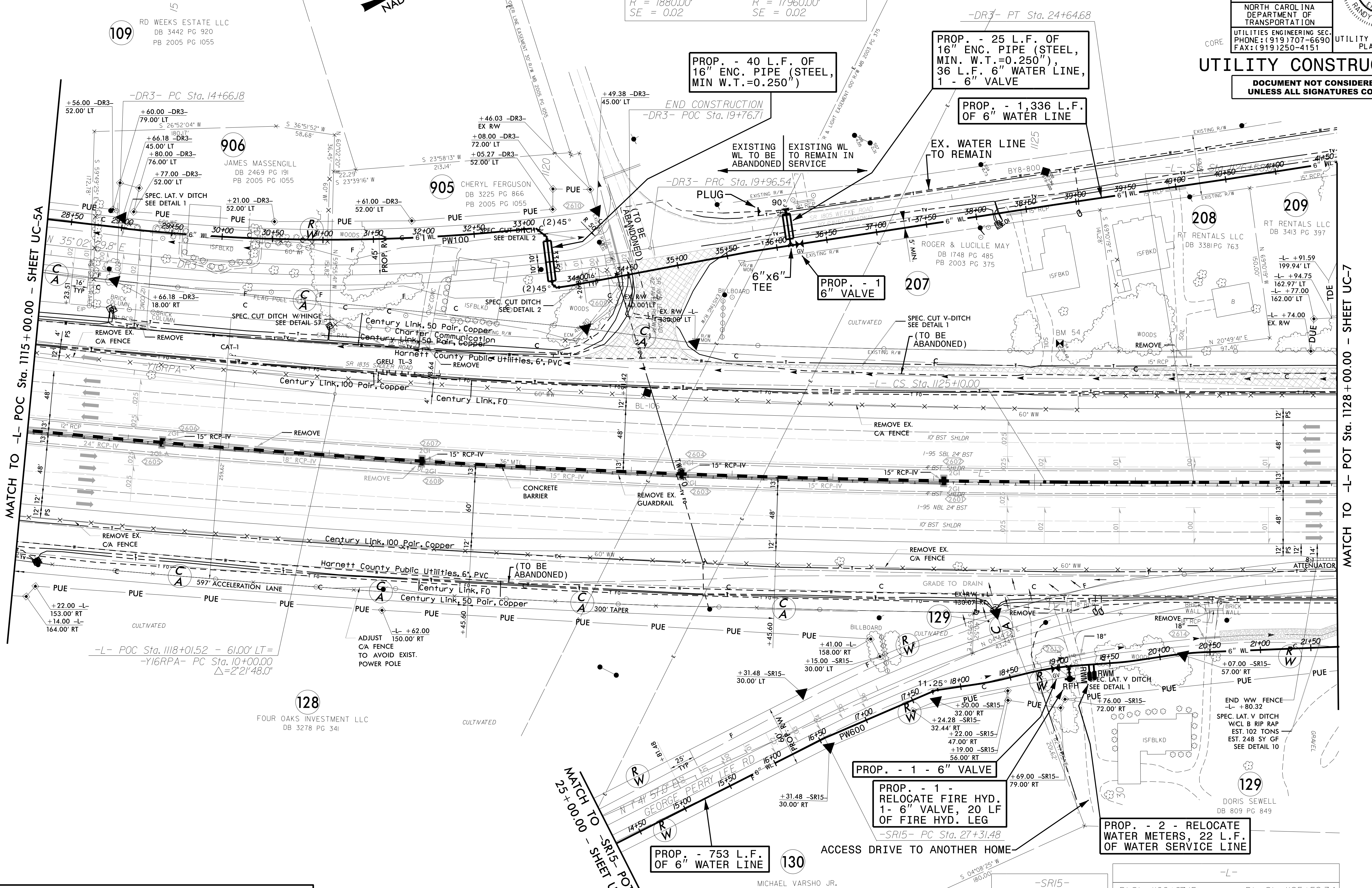
### UTILITY CONSTRUCTION

DOCUMENT NOT CONSIDERED FINAL UNLESS ALL SIGNATURES COMPLETED



**-DR3-**

PI Sta 17+33.13	PI Sta 22+30.62
$\Delta = 16^{\circ}09'49"$ (RT)	$\Delta = 1^{\circ}29'36"$ (RT)
$D = 3^{\circ}02'52"$	$D = 0^{\circ}19'08"$
$L = 530.37'$	$L = 468.13'$
$T = 266.96'$	$T = 234.08'$
$R = 1880.00'$	$R = 17960.00'$
$SE = 0.02$	$SE = 0.02$



THE ESTIMATED QUANTITY OF D.I. WATER PIPE FITTINGS ON THIS PLAN SHEET IS 2,125 POUNDS. THE ACTUAL QUANTITY AND TYPE OF FITTINGS WILL VARY BASED ON FIELD CONDITIONS.

**-SR15-**

PI Sta 30+48.66	PI Sta 1125+59.34
$\Delta = 26^{\circ}49'36.4"$ (RT)	$\Delta = 18^{\circ}38'06"$ (LT)
$D = 4^{\circ}18'28.6"$	$D = 0^{\circ}22'15"$
$L = 622.73'$	$L = 148.00'$
$T = 317.18'$	$T = 1875.98'$
$R = 1,330.00'$	$R = 11434.12'$
$SE = 0.06$	$SE = 0.025$
	$RUNOFF =$

UTILITY CONSTRUCTION PLANS PREPARED BY:  
**DAVIS • MARTIN • POWELL**  
 ENGINEERS & SURVEYORS **dmp**  
 6415 OLD PLANK RD., HIGH POINT, NC 27265  
 PHONE: (336) 886-4821 FAX: (336) 886-4458  
 WWW.DMP-INC.COM LICENSE: F-0245

REVISIONS

MATCH TO -L- POC Sta. 1115+00.00 - SHEET UC-5A

MATCH TO -L- POT Sta. 1128+00.00 - SHEET UC-7

MATCH TO -SR15- POT Sta. 25+00.00 - SHEET UC-17