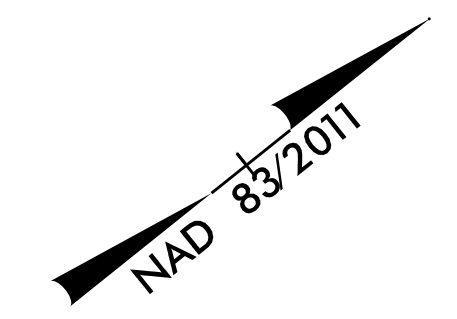
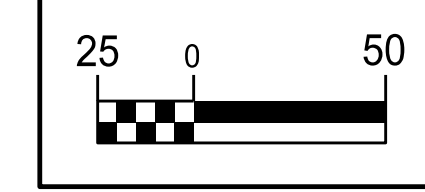


5/14/2011

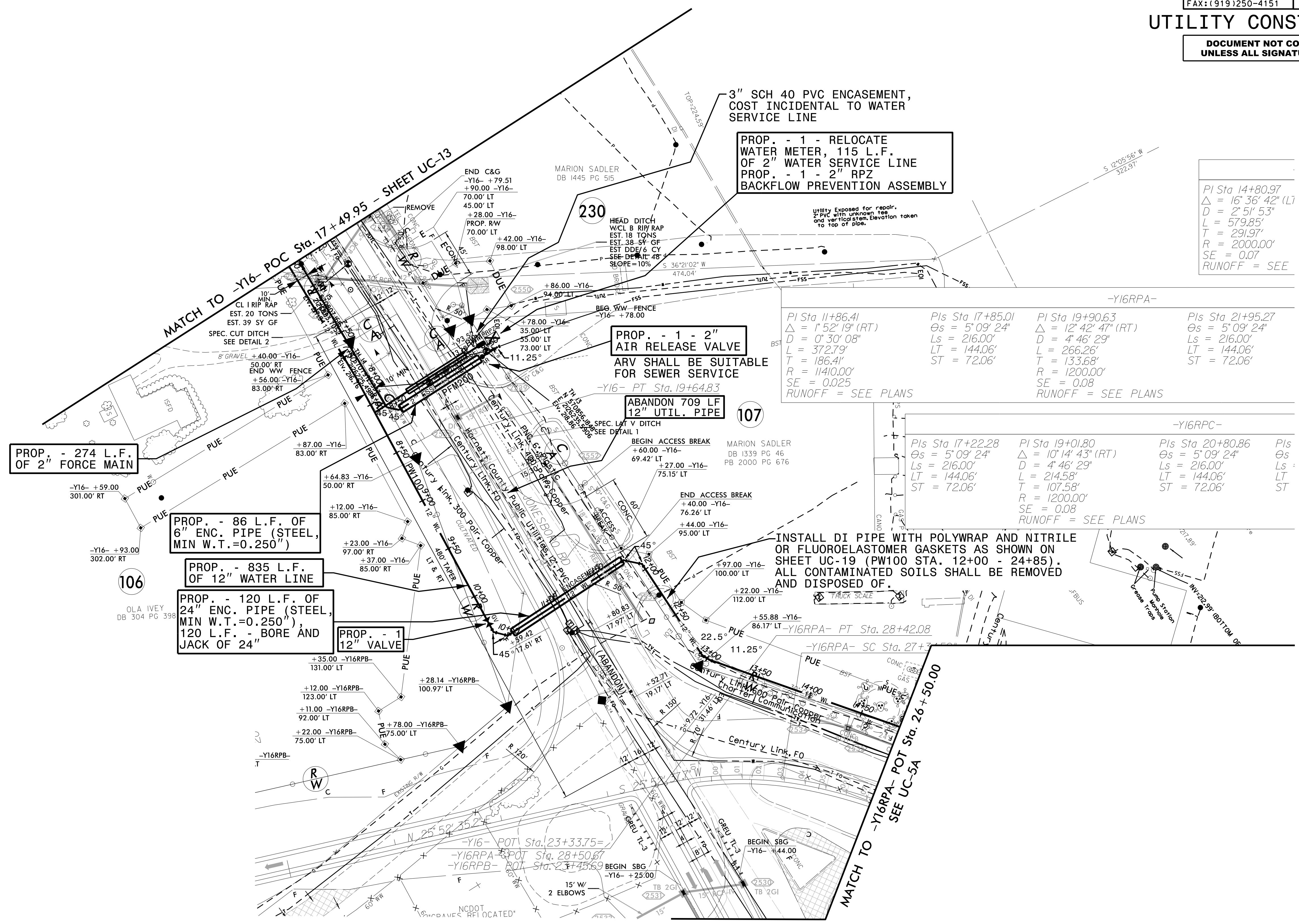


PROJECT REFERENCE NO.	SHEET NO.
I-5883	UC-5B
DESIGNED BY: DMP	
DRAWN BY: DMP	
CHECKED BY: DMP	
APPROVED BY:	
REVISED:	
NORTH CAROLINA DEPARTMENT OF TRANSPORTATION	
UTILITIES ENGINEERING SEC. PHONE: (919) 707-6690 FAX: (919) 250-4151	UTILITY CONSTRUCTION PLANS ONLY

### UTILITY CONSTRUCTION

**DOCUMENT NOT CONSIDERED FINAL UNLESS ALL SIGNATURES COMPLETED**

REVISIONS



PI Sta 14+80.97  
 $\Delta = 16' 36" 42" (LT)$   
 $D = 2' 5' 53"$   
 $L = 579.85'$   
 $T = 291.97'$   
 $R = 2000.00'$   
 $SE = 0.07$   
 RUNOFF = SEE

PI Sta 11+86.41  
 $\Delta = 1' 52" 19" (RT)$   
 $D = 0' 30" 08"$   
 $L = 372.79'$   
 $T = 186.41'$   
 $R = 1140.00'$   
 $SE = 0.025$   
 RUNOFF = SEE PLANS

PIs Sta 17+85.01  
 $\Theta s = 5' 09" 24"$   
 $Ls = 216.00'$   
 $LT = 144.06'$   
 $ST = 72.06'$

PI Sta 19+90.63  
 $\Delta = 12' 42" 47" (RT)$   
 $D = 4' 46" 29"$   
 $L = 266.26'$   
 $T = 133.68'$   
 $R = 1200.00'$   
 $SE = 0.08$   
 RUNOFF = SEE PLANS

PIs Sta 21+95.27  
 $\Theta s = 5' 09" 24"$   
 $Ls = 216.00'$   
 $LT = 144.06'$   
 $ST = 72.06'$

PIs Sta 17+22.28  
 $\Theta s = 5' 09" 24"$   
 $Ls = 216.00'$   
 $LT = 144.06'$   
 $ST = 72.06'$

PI Sta 19+01.80  
 $\Delta = 10' 14" 43" (RT)$   
 $D = 4' 46" 29"$   
 $L = 214.58'$   
 $T = 107.58'$   
 $R = 1200.00'$   
 $SE = 0.08$   
 RUNOFF = SEE PLANS

PIs Sta 20+80.86  
 $\Theta s = 5' 09" 24"$   
 $Ls = 216.00'$   
 $LT = 144.06'$   
 $ST = 72.06'$

INSTALL DI PIPE WITH POLYWRAP AND NITRILE OR FLUOROELASTOMER GASKETS AS SHOWN ON SHEET UC-19 (PW100 STA. 12+00 - 24+85). ALL CONTAMINATED SOILS SHALL BE REMOVED AND DISPOSED OF.

THE ESTIMATED QUANTITY OF D.I. WATER PIPE FITTINGS ON THIS PLAN SHEET IS 1,300 POUNDS. THE ACTUAL QUANTITY AND TYPE OF FITTINGS WILL VARY BASED ON FIELD CONDITIONS.