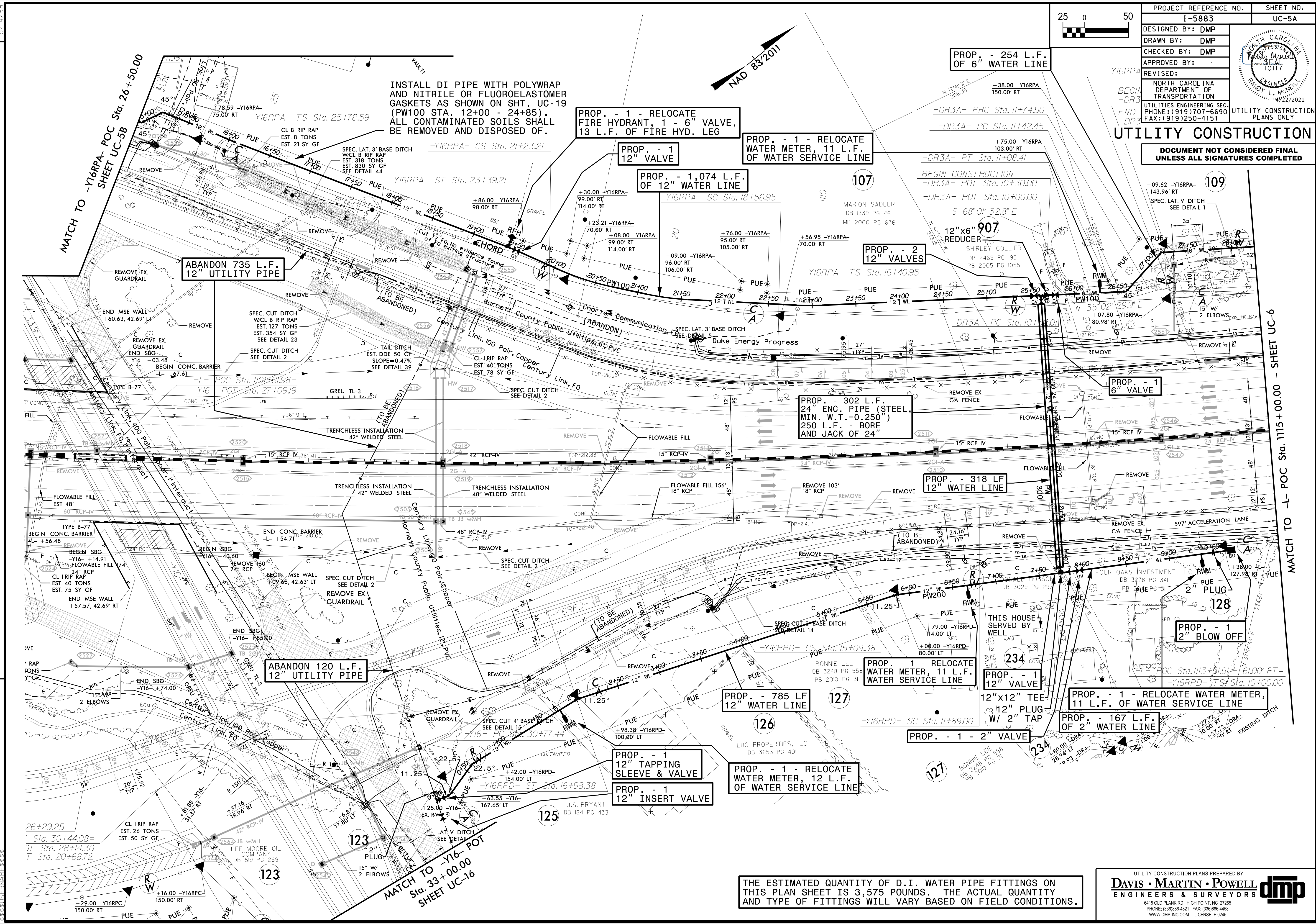


PROJECT REFERENCE NO.	SHEET NO.
I-5883	UC-5A
DESIGNED BY: DMP	
DRAWN BY: DMP	
CHECKED BY: DMP	
APPROVED BY:	
REVISED:	
NORTH CAROLINA DEPARTMENT OF TRANSPORTATION	UTILITY CONSTRUCTION PLANS ONLY
UTILITIES ENGINEERING SEC. PHONE: (919) 707-6690 FAX: (919) 250-4151	

UTILITY CONSTRUCTION

DOCUMENT NOT CONSIDERED FINAL
UNLESS ALL SIGNATURES COMPLETED



INSTALL DI PIPE WITH POLYWRAP AND NITRILE OR FLUORELASTOMER GASKETS AS SHOWN ON SHT. UC-19 (PW100 STA. 12+00 - 24+85). ALL CONTAMINATED SOILS SHALL BE REMOVED AND DISPOSED OF.

PROP. - 1 - RELOCATE FIRE HYDRANT, 1 - 6" VALVE, 13 L.F. OF FIRE HYD. LEG

PROP. - 1 - RELOCATE WATER METER, 11 L.F. OF WATER SERVICE LINE

PROP. - 1,074 L.F. OF 12" WATER LINE

PROP. - 2 12" VALVES

PROP. - 302 L.F. 24" ENC. PIPE (STEEL, MIN. W.T.=0.250") 250 L.F. - BORE AND JACK OF 24"

PROP. - 318 LF 12" WATER LINE

PROP. - 1 - RELOCATE WATER METER, 11 L.F. WATER SERVICE LINE

PROP. - 785 LF 12" WATER LINE

PROP. - 1 12" TAPPING SLEEVE & VALVE

PROP. - 1 12" INSERT VALVE

PROP. - 1 - RELOCATE WATER METER, 12 L.F. OF WATER SERVICE LINE

PROP. - 1 - RELOCATE WATER METER, 11 L.F. OF WATER SERVICE LINE

PROP. - 167 L.F. OF 2" WATER LINE

PROP. - 1 2" BLOW OFF

ABANDON 735 L.F. 12" UTILITY PIPE

ABANDON 120 L.F. 12" UTILITY PIPE

Sta. 30+44.08 =
T Sta. 28+14.30
T Sta. 20+68.72

THE ESTIMATED QUANTITY OF D.I. WATER PIPE FITTINGS ON THIS PLAN SHEET IS 3,575 POUNDS. THE ACTUAL QUANTITY AND TYPE OF FITTINGS WILL VARY BASED ON FIELD CONDITIONS.