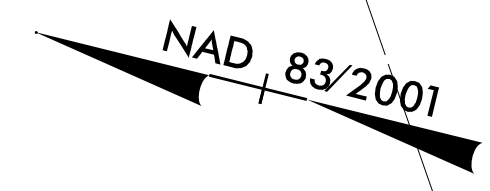
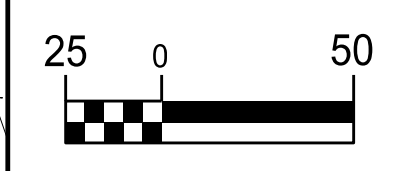


5/14/20

-SR12-	
PI Sta 11+58.59	PI Sta 16+35.12
$\Delta = 13^{\circ} 01' 10.0''$ (LT)	$\Delta = 18^{\circ} 21' 39.0''$ (RT)
$D = 9^{\circ} 32' 57.5''$	$D = 9^{\circ} 32' 57.5''$
$L = 136.34'$	$L = 192.27'$
$T = 68.46'$	$T = 96.97'$
$R = 600.00'$	$R = 600.00'$

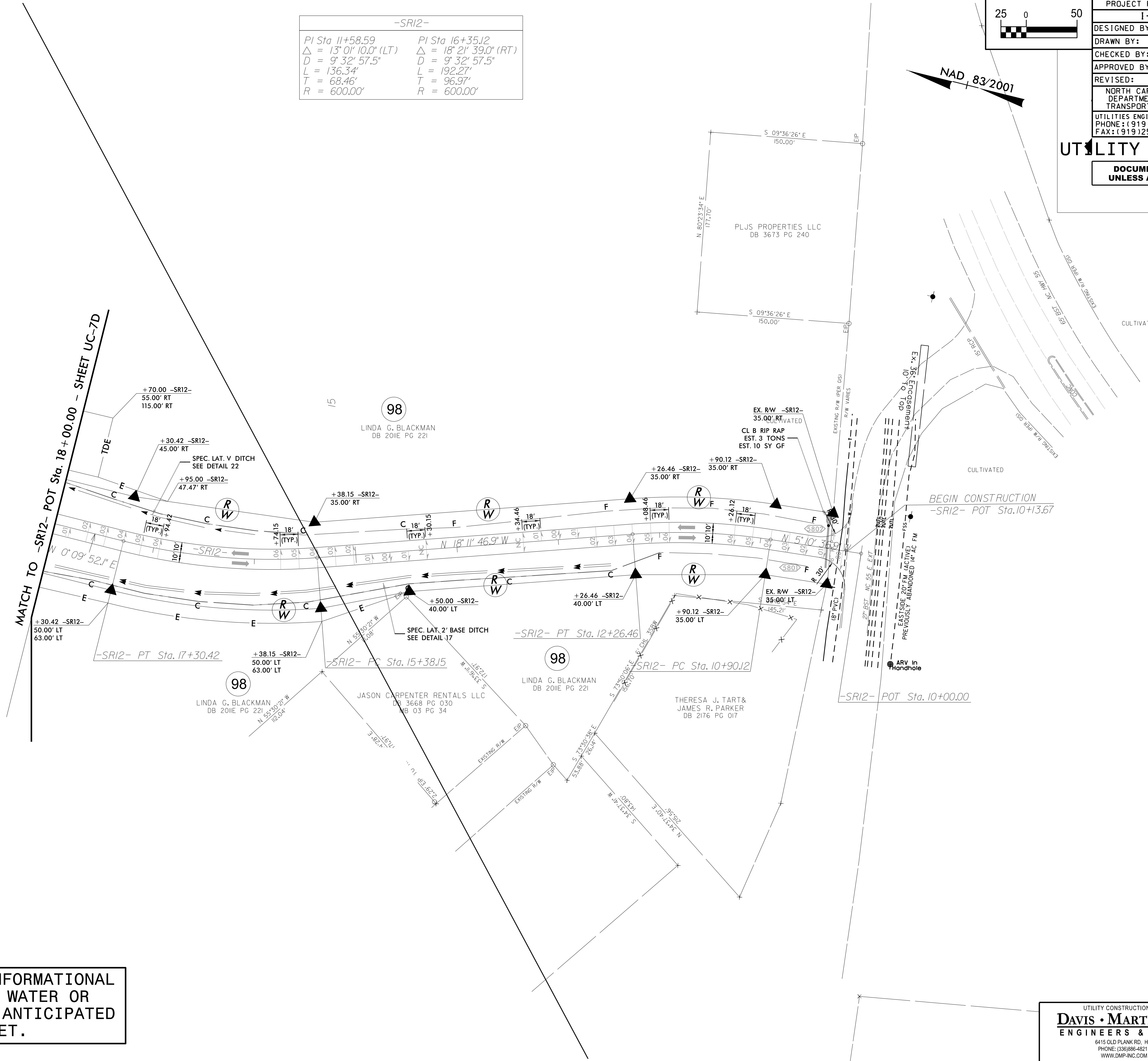


PROJECT REFERENCE NO.	SHEET NO.
I-5878	UC-15
DESIGNED BY: DMP	
DRAWN BY: DMP	
CHECKED BY: DMP	
APPROVED BY:	
REVISED:	
NORTH CAROLINA DEPARTMENT OF TRANSPORTATION	UTILITY CONSTRUCTION PLANS ONLY
UTILITIES ENGINEERING SEC. PHONE: (919) 707-6690 FAX: (919) 250-4151	

UTILITY CONSTRUCTION

DOCUMENT NOT CONSIDERED FINAL UNLESS ALL SIGNATURES COMPLETED

REVISIONS



THIS SHEET IS FOR INFORMATIONAL PURPOSES ONLY. NO WATER OR SEWER CONFLICTS ARE ANTICIPATED ON THIS SHEET.