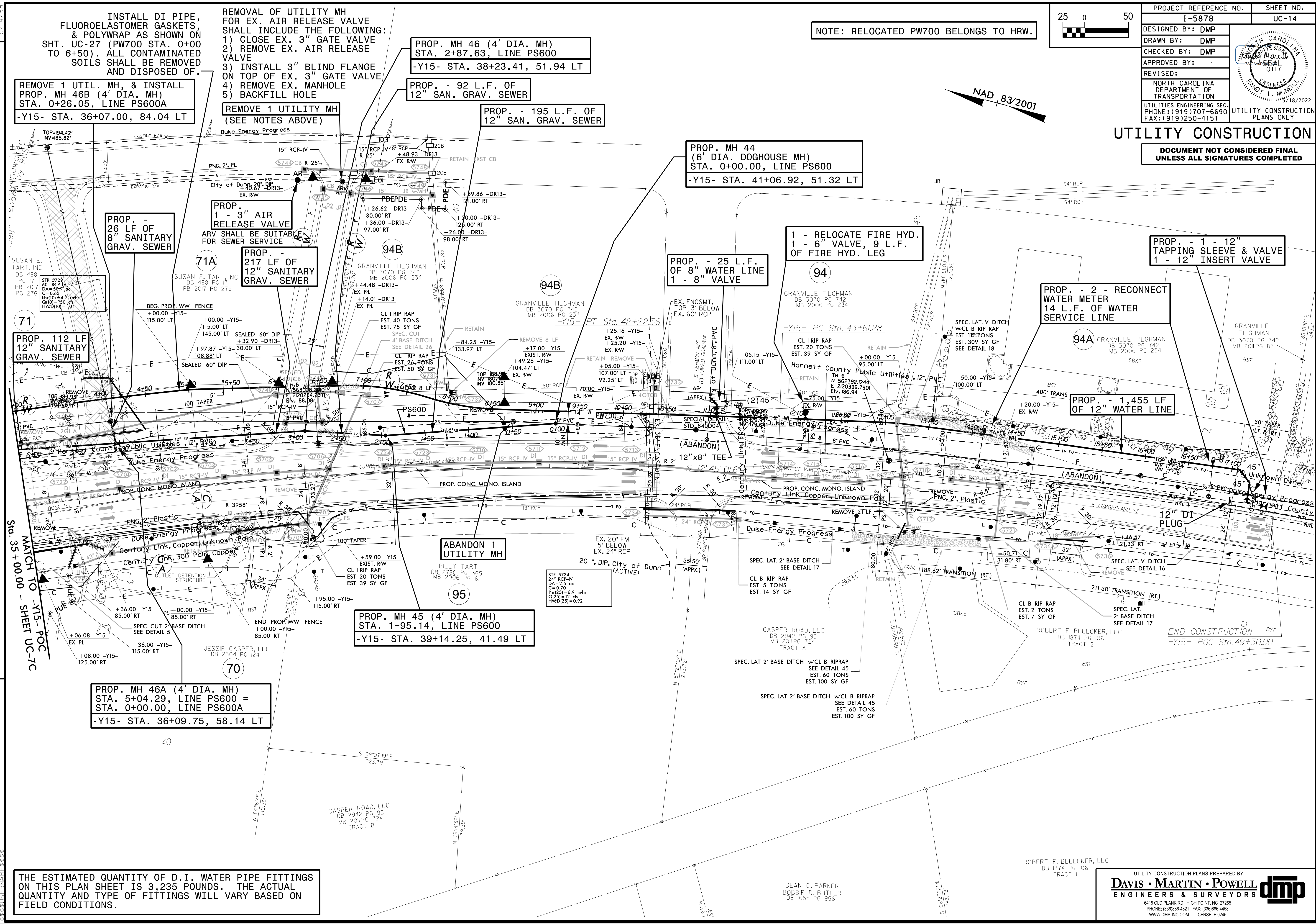


PROJECT REFERENCE NO.	SHEET NO.
I-5878	UC-14
DESIGNED BY: DMP	
DRAWN BY: DMP	
CHECKED BY: DMP	
APPROVED BY:	
REVISED:	
NORTH CAROLINA DEPARTMENT OF TRANSPORTATION	
UTILITIES ENGINEERING SEC. PHONE: (919) 707-6690 FAX: (919) 250-4151	
UTILITY CONSTRUCTION PLANS ONLY	

UTILITY CONSTRUCTION

DOCUMENT NOT CONSIDERED FINAL UNLESS ALL SIGNATURES COMPLETED

NOTE: RELOCATED PW700 BELONGS TO HRW.



REMOVE 1 UTIL. MH, & INSTALL PROP. MH 46B (4' DIA. MH) STA. 0+26.05, LINE PS600A -Y15- STA. 36+07.00, 84.04 LT

REMOVE 1 UTILITY MH (SEE NOTES ABOVE)

PROP. MH 46 (4' DIA. MH) STA. 2+87.63, LINE PS600 -Y15- STA. 38+23.41, 51.94 LT

PROP. - 92 L.F. OF 12" SAN. GRAV. SEWER

PROP. - 195 L.F. OF 12" SAN. GRAV. SEWER

PROP. MH 44 (6' DIA. DOGHOUSE MH) STA. 0+00.00, LINE PS600 -Y15- STA. 41+06.92, 51.32 LT

PROP. - 26 LF OF 8" SANITARY GRAV. SEWER

PROP. 1 - 3" AIR RELEASE VALVE ARV SHALL BE SUITABLE FOR SEWER SERVICE

PROP. - 217 LF OF 12" SANITARY GRAV. SEWER

PROP. - 25 L.F. OF 8" WATER LINE 1 - 8" VALVE

1 - RELOCATE FIRE HYD. 1 - 6" VALVE, 9 L.F. OF FIRE HYD. LEG

PROP. - 1 - 12" TAPPING SLEEVE & VALVE 1 - 12" INSERT VALVE

PROP. - 2 - RECONNECT WATER METER 14 L.F. OF WATER SERVICE LINE

PROP. - 1,455 LF OF 12" WATER LINE

PROP. 112 LF OF 12" SANITARY GRAV. SEWER

ABANDON 1 UTILITY MH

PROP. MH 45 (4' DIA. MH) STA. 1+95.14, LINE PS600 -Y15- STA. 39+14.25, 41.49 LT

PROP. MH 46A (4' DIA. MH) STA. 5+04.29, LINE PS600 = STA. 0+00.00, LINE PS600A -Y15- STA. 36+09.75, 58.14 LT

THE ESTIMATED QUANTITY OF D.I. WATER PIPE FITTINGS ON THIS PLAN SHEET IS 3,235 POUNDS. THE ACTUAL QUANTITY AND TYPE OF FITTINGS WILL VARY BASED ON FIELD CONDITIONS.

REVISIONS
 1. 6/21/2021 - ADDED FLUOROELASTOMER GASKETS TO PW700 FROM STA. 0+00 TO 6+50.
 2. 5/16/2022 - ADDED ARV ON EX. 20" FSS NORTH OF -DR13-, ADDED NOTE TO REMOVE UTILITY MH FOR EX. ARV IN -DR13-, ADDED MH 46A ON SEWER LINE PS600 AND 8" SEWER LINE CONNECTING TO EX. SEWER LINE.

5/21/2022