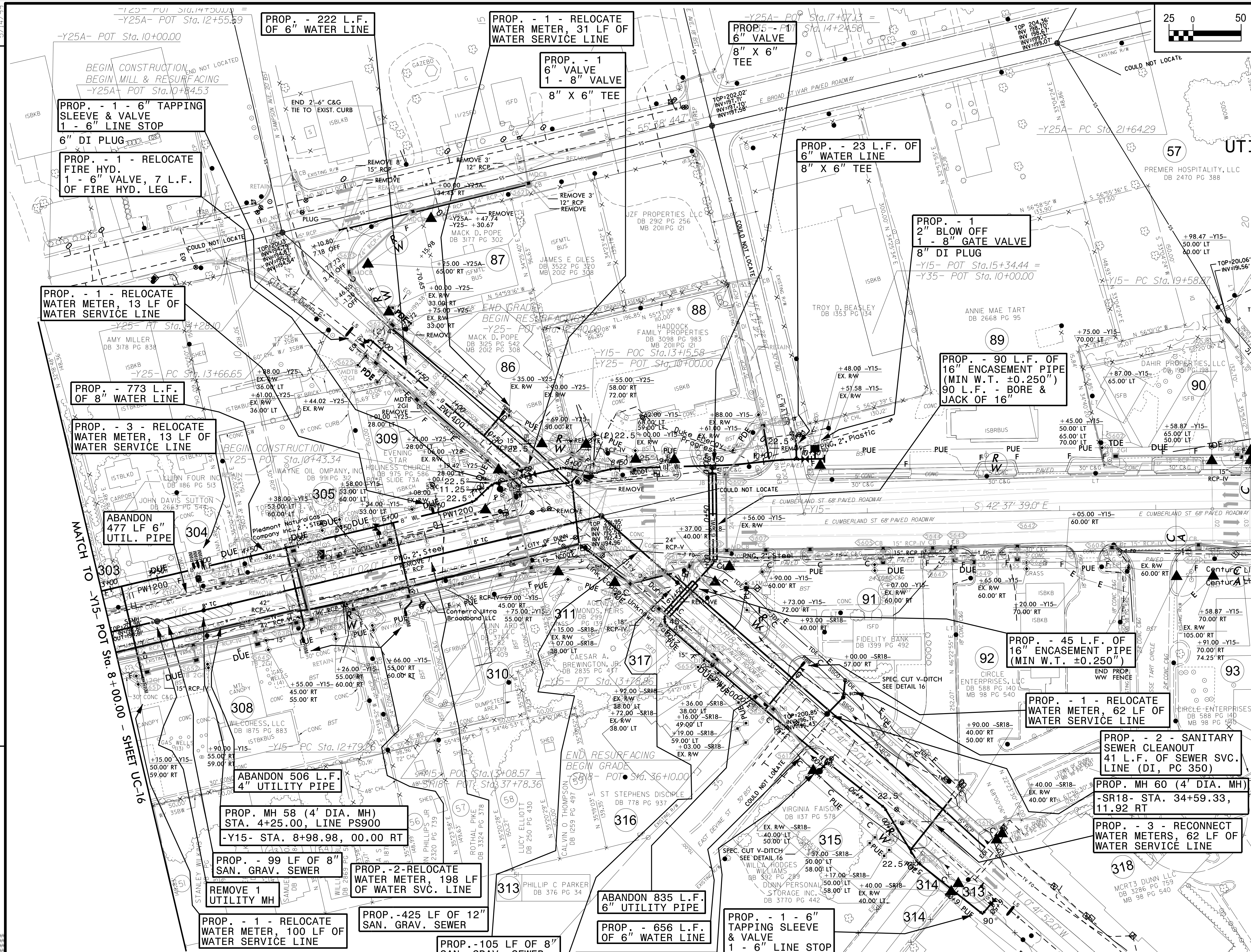
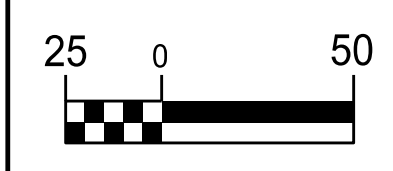


PROJECT REFERENCE NO.	SHEET NO.
I-5878	UC-13
DESIGNED BY: DMP	
DRAWN BY: DMP	
CHECKED BY: DMP	
APPROVED BY:	
REVISED:	UTILITY CONSTRUCTION PLANS ONLY
NORTH CAROLINA DEPARTMENT OF TRANSPORTATION	
UTILITIES ENGINEERING SEC. PHONE: (919) 707-6690 FAX: (919) 250-4151	

# UTILITY CONSTRUCTION

DOCUMENT NOT CONSIDERED FINAL UNLESS ALL SIGNATURES COMPLETED



THE ESTIMATED QUANTITY OF D.I. WATER PIPE FITTINGS ON THIS PLAN SHEET IS 2,630 POUNDS. THE ACTUAL QUANTITY AND TYPE OF FITTINGS WILL VARY BASED ON FIELD CONDITIONS.

PROP. MH 59 (4' DIA. MH)  
STA. 1+05.00, LINE PS1000  
-SR18- STA. 36+66.22, 13.92 RT

PROP. - 1 - RELOCATE FIRE HYD. 1 - 6" VALVE, 13 L.F. OF FIRE HYD. LEG