

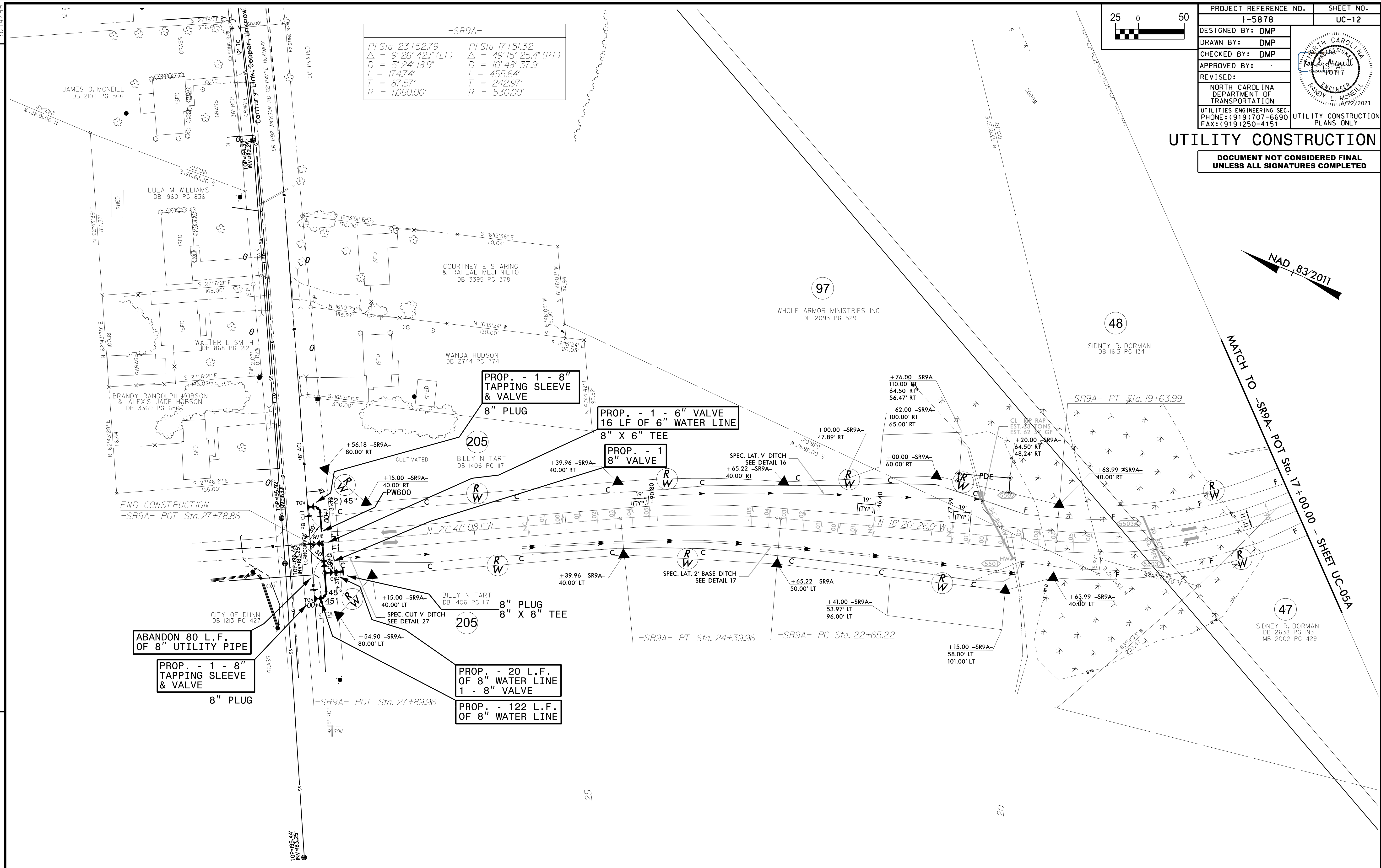
PROJECT REFERENCE NO.	SHEET NO.
I-5878	UC-12
DESIGNED BY: DMP	
DRAWN BY: DMP	
CHECKED BY: DMP	
APPROVED BY:	
REVISED:	
NORTH CAROLINA DEPARTMENT OF TRANSPORTATION	
UTILITIES ENGINEERING SEC. PHONE: (919) 707-6690 FAX: (919) 250-4151	UTILITY CONSTRUCTION PLANS ONLY

UTILITY CONSTRUCTION
DOCUMENT NOT CONSIDERED FINAL UNLESS ALL SIGNATURES COMPLETED

-SR9A-

PI Sta 23+52.79	PI Sta 17+51.32
$\Delta = 9^{\circ} 26' 42.1''$ (LT)	$\Delta = 49^{\circ} 15' 25.4''$ (RT)
D = 5' 24' 18.9"	D = 10' 48' 37.9"
L = 174.74'	L = 455.64'
T = 87.57'	T = 242.97'
R = 1,060.00'	R = 530.00'

REVISIONS



THE ESTIMATED QUANTITY OF D.I. WATER PIPE FITTINGS ON THIS PLAN SHEET IS 1,080 POUNDS. THE ACTUAL QUANTITY AND TYPE OF FITTINGS WILL VARY BASED ON FIELD CONDITIONS.