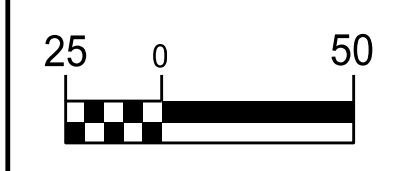
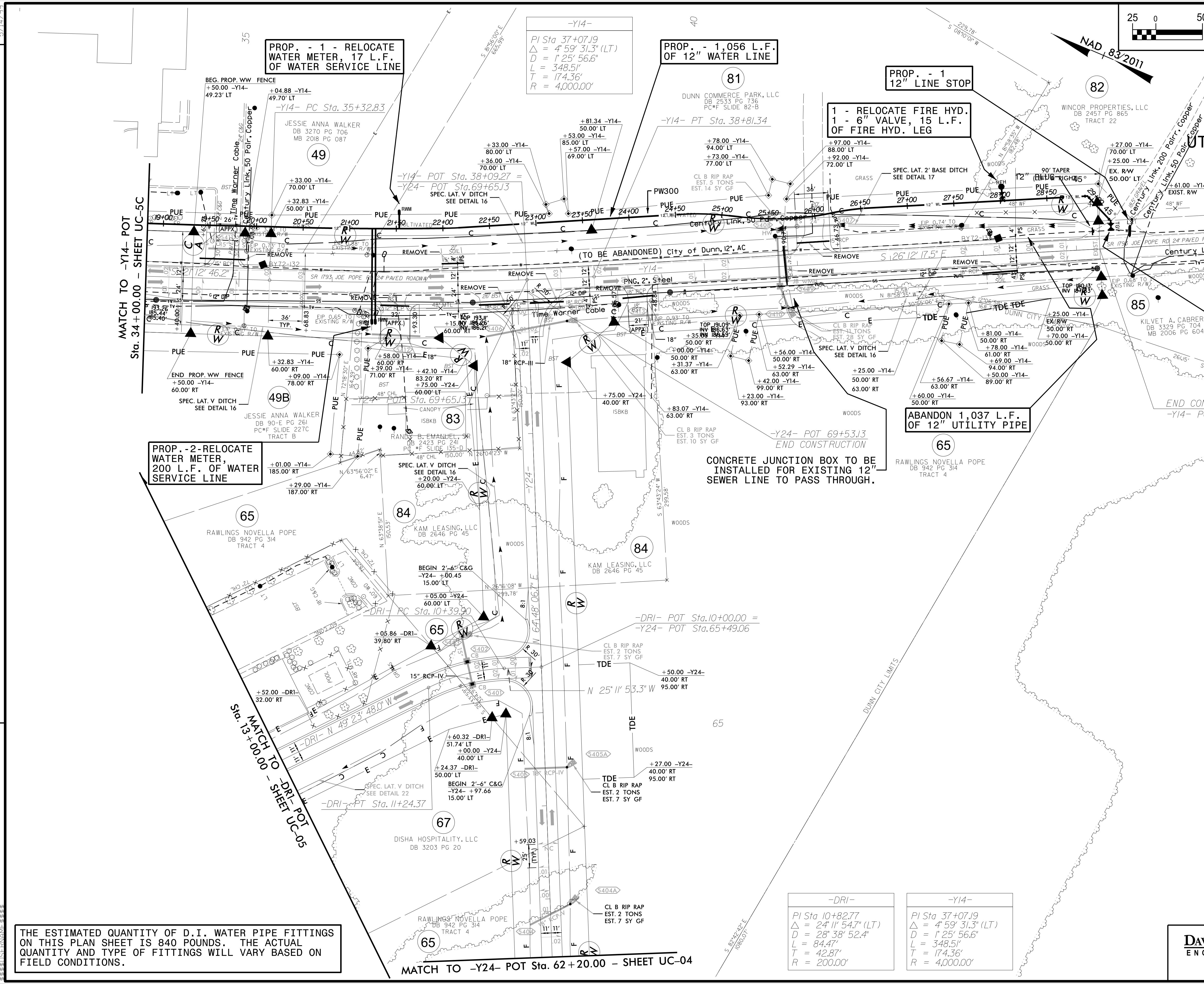


PROJECT REFERENCE NO.	SHEET NO.
I-5878	UC-11
DESIGNED BY: DMP	
DRAWN BY: DMP	
CHECKED BY: DMP	
APPROVED BY:	
REVISED:	
NORTH CAROLINA DEPARTMENT OF TRANSPORTATION	UTILITY CONSTRUCTION PLANS ONLY
UTILITIES ENGINEERING SEC. PHONE: (919) 707-6690 FAX: (919) 250-4151	



UTILITY CONSTRUCTION
 DOCUMENT NOT CONSIDERED FINAL
 UNLESS ALL SIGNATURES COMPLETED



PROP. - 1 - RELOCATE WATER METER, 17 L.F. OF WATER SERVICE LINE

PROP. - 1,056 L.F. OF 12" WATER LINE

PROP. - 1 12" LINE STOP

1 - RELOCATE FIRE HYD. 1 - 6" VALVE, 15 L.F. OF FIRE HYD. LEG

PROP. - 1-12" TAP. SLEEVE & VALVE

ABANDON 1,037 L.F. OF 12" UTILITY PIPE

PROP. - 2 - RELOCATE WATER METER, 200 L.F. OF WATER SERVICE LINE

CONCRETE JUNCTION BOX TO BE INSTALLED FOR EXISTING 12" SEWER LINE TO PASS THROUGH.

-Y14-
 PI Sta 37+07.19
 $\Delta = 4' 59' 31.3''$ (LT)
 $D = 1' 25' 56.6''$
 $L = 348.51'$
 $T = 174.36'$
 $R = 4,000.00'$

-DRI-
 PI Sta 10+82.77
 $\Delta = 24' 11' 54.7''$ (LT)
 $D = 28' 38' 52.4''$
 $L = 84.47'$
 $T = 42.87'$
 $R = 200.00'$

-Y14-
 PI Sta 37+07.19
 $\Delta = 4' 59' 31.3''$ (LT)
 $D = 1' 25' 56.6''$
 $L = 348.51'$
 $T = 174.36'$
 $R = 4,000.00'$

THE ESTIMATED QUANTITY OF D.I. WATER PIPE FITTINGS ON THIS PLAN SHEET IS 840 POUNDS. THE ACTUAL QUANTITY AND TYPE OF FITTINGS WILL VARY BASED ON FIELD CONDITIONS.

UTILITY CONSTRUCTION PLANS PREPARED BY:
DAVIS • MARTIN • POWELL
 ENGINEERS & SURVEYORS
 6415 OLD PLANK RD., HIGH POINT, NC 27265
 PHONE: (336) 886-4821 FAX: (336) 886-4458
 WWW.DMP-INC.COM LICENSE: F-0245

REVISIONS

5/14/2021

MATCH TO -Y14- POT Sta. 34+00.00 - SHEET UC-5C

MATCH TO -DRI- POT Sta. 13+00.00 - SHEET UC-05

MATCH TO -Y24- POT Sta. 62+20.00 - SHEET UC-04