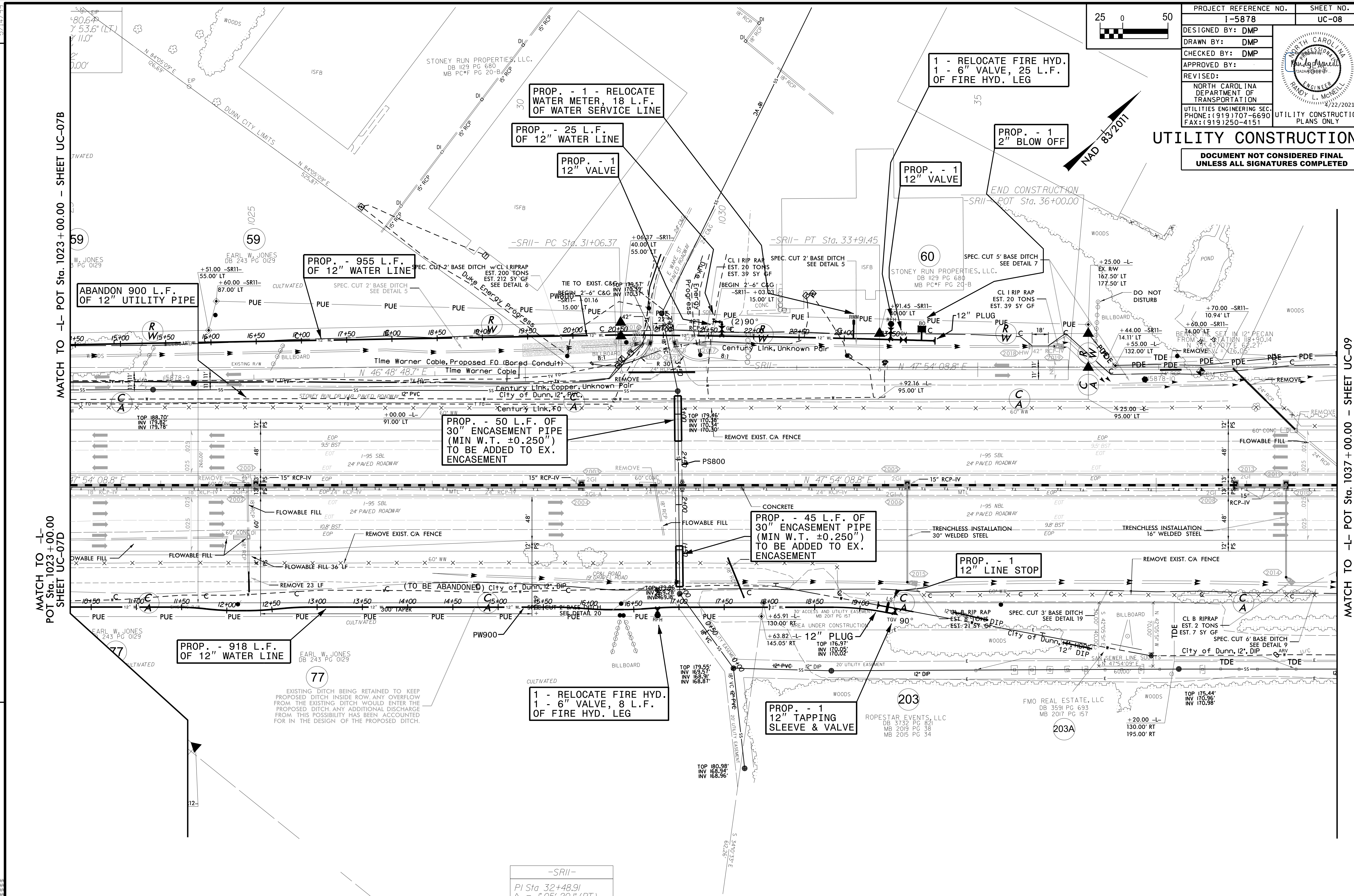


PROJECT REFERENCE NO.	SHEET NO.
1-5878	UC-08
DESIGNED BY: DMP	
DRAWN BY: DMP	
CHECKED BY: DMP	
APPROVED BY:	
REVISED:	
REVISIONS:	UTILITY CONSTRUCTION PLANS ONLY

UTILITY CONSTRUCTION
 DOCUMENT NOT CONSIDERED FINAL
 UNLESS ALL SIGNATURES COMPLETED



THE ESTIMATED QUANTITY OF D.I. WATER PIPE FITTINGS ON THIS PLAN SHEET IS 2,875 POUNDS. THE ACTUAL QUANTITY AND TYPE OF FITTINGS WILL VARY BASED ON FIELD CONDITIONS.

-SR11-
 PI Sta. 32+48.91
 $\Delta = 1^{\circ}05'20.1''$ (RT)
 $D = 0^{\circ}22'55.1''$
 $L = 285.08'$
 $T = 142.54'$
 $R = 15,000.00'$