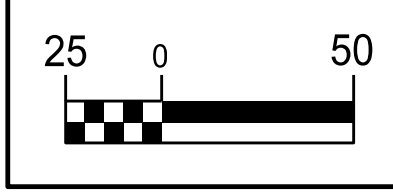


5/14/2011

THE ESTIMATED QUANTITY OF D.I. WATER PIPE FITTINGS ON THIS PLAN SHEET IS 2,165 POUNDS. THE ACTUAL QUANTITY AND TYPE OF FITTINGS WILL VARY BASED ON FIELD CONDITIONS.

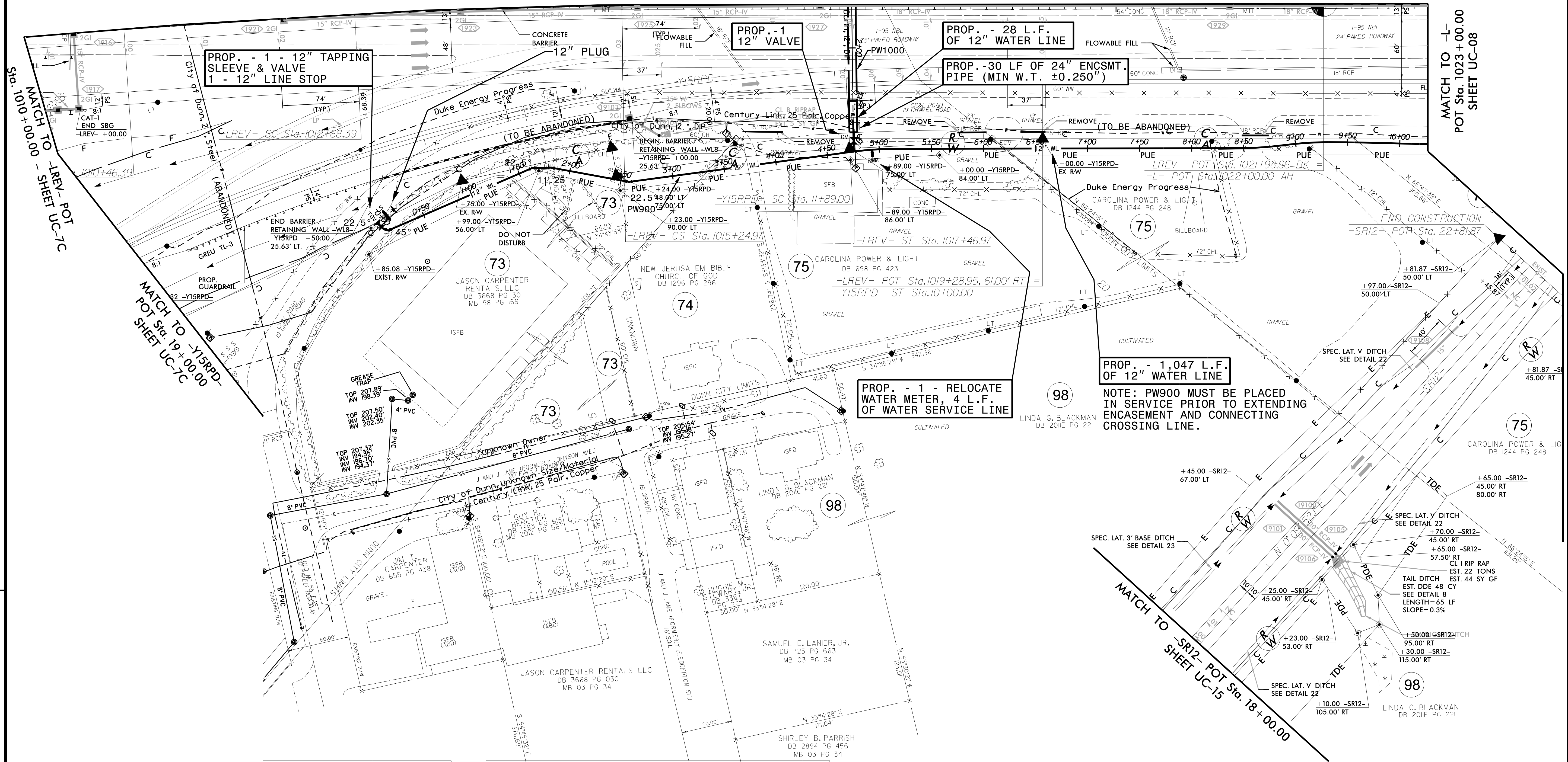


PROJECT REFERENCE NO.	SHEET NO.
I-5878	UC-7D
DESIGNED BY: DMP	
DRAWN BY: DMP	
CHECKED BY: DMP	
APPROVED BY:	
REVISED:	
NORTH CAROLINA DEPARTMENT OF TRANSPORTATION	
UTILITIES ENGINEERING SEC. PHONE: (919) 707-6690 FAX: (919) 250-4151	UTILITY CONSTRUCTION PLANS ONLY

UTILITY CONSTRUCTION DOCUMENT NOT CONSIDERED FINAL UNLESS ALL SIGNATURES COMPLETED

MATCH TO SHEET UC-7B

MATCH TO -L- POT Sta. 1023+00.00 SHEET UC-08



REVISIONS

MATCH TO -L- POT UC-1C
Sta. 100+00.00

MATCH TO -Y15RPD-
POT Sta. 19+00.00
SHEET UC-7C

MATCH TO -SR12- POT Sta. 18+00.00
SHEET UC-15

10' 4" 42.8"	PI Sta 26+57.12
168.00'	Δ = 38' 38" 23.2" (RT)
112.21'	D = 12' 43" 56.6"
56.19'	L = 303.48'
	T = 157.76'
	R = 450.00'

PI Sta 23+31.00	PI Sta 27+88.20	PI Sta 29+69.96
Δ = 52' 27" 44.5" (LT)	Δ = 13' 54' 57" (RT)	Δ = 17' 37' 46" (RT)
D = 22' 55" 05.9"	D = 8' 33" 05.8"	D = 8' 48" 53.0"
L = 228.91'	L = 162.73'	L = 200.00'
T = 123.18'	T = 81.77'	T = 100.80'
R = 250.00'	R = 670.00'	R = 650.00'