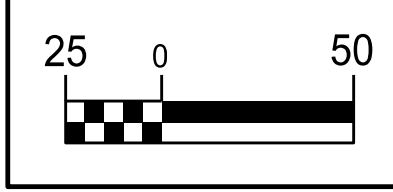


THE ESTIMATED QUANTITY OF D.I. WATER PIPE FITTINGS ON THIS PLAN SHEET IS 4,240 POUNDS. THE ACTUAL QUANTITY AND TYPE OF FITTINGS WILL VARY BASED ON FIELD CONDITIONS.

| PROP. MH # | SEWER LINE PS700 STATION | DIA. | ROADWAY STATION AND OFFSET     |
|------------|--------------------------|------|--------------------------------|
| 50         | 9+24.21                  | 4'   | -SR11- STA. 10+76.00, 15.80 RT |
| 51         | 8+58.11                  | 4'   | -SR11- STA. 11+03.15, 45.11 LT |
| 52         | 7+07.70                  | 4'   | -SR11- STA. 12+82.40, 43.88 LT |
| 53         | 6+10.36                  | 4'   | -SR11- STA. 13+87.78, 21.31 LT |
| 54         | 4+01.39                  | 4'   | -SR11- STA. 15+99.90, 22.50 LT |
| 55         | 2+09.20                  | 4'   | -SR11- STA. 17+95.40, 27.50 LT |
| 56         | 0+51.73                  | 4'   | -SR11- STA. 19+49.43, 41.14 LT |
| 57         | 0+00.00                  | 4'   | -SR11- STA. 19+84.86, 0.30 RT  |

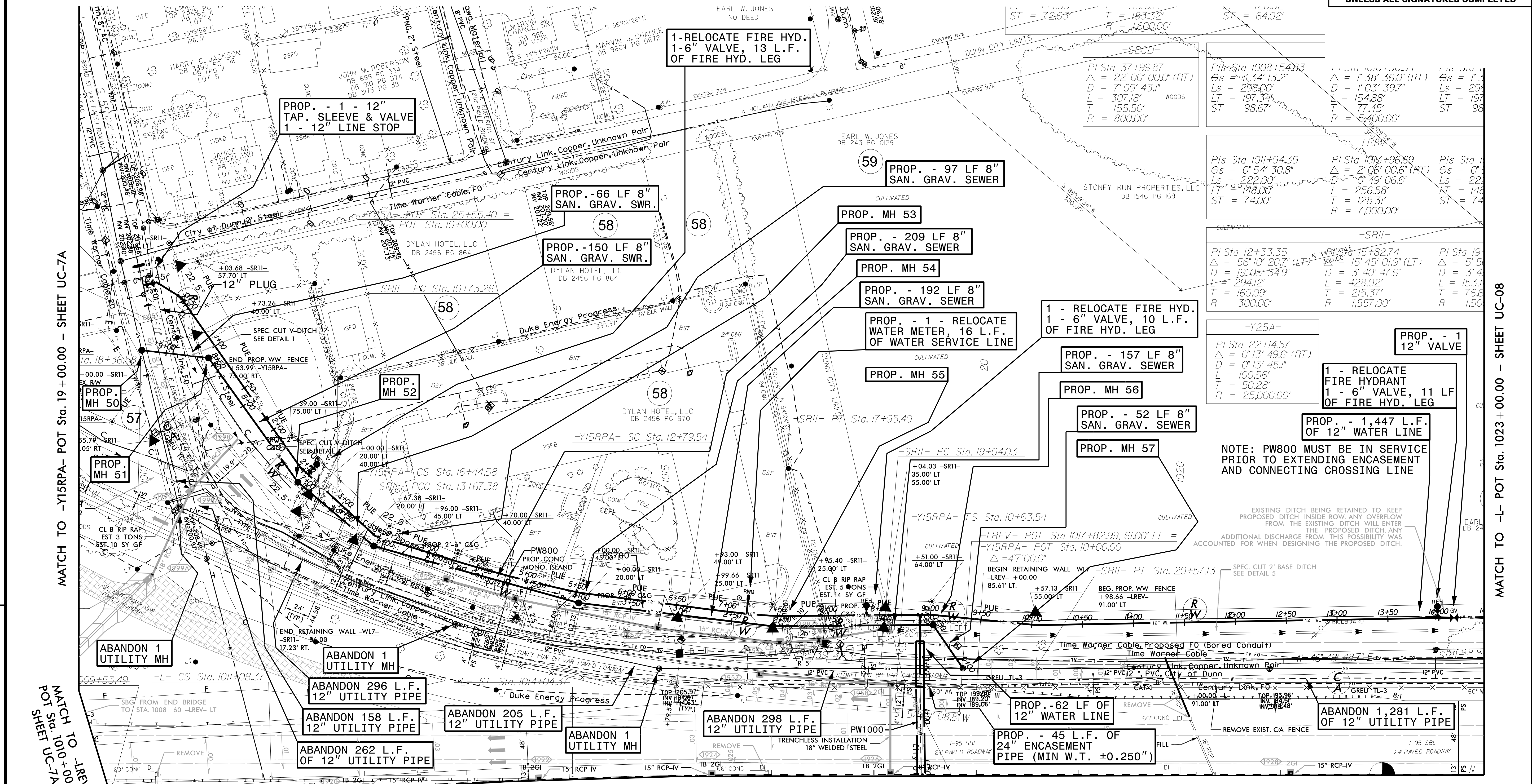


|  |        |
|--|--------|
| PROJECT REFERENCE NO.  | I-5878 |
| SHEET NO.  | UC-7B  |
| DESIGNED BY:   | DMP    |
| DRAWN BY:  | DMP    |
| CHECKED BY:  | DMP    |
| APPROVED BY:   |        |
| REVISED:   |        |
| NORTH CAROLINA DEPARTMENT OF TRANSPORTATION                          |        |
| UTILITIES ENGINEERING SEC. PHONE: (919) 707-6690 FAX: (919) 250-4151 |        |
| UTILITY CONSTRUCTION PLANS ONLY                                      |        |



### UTILITY CONSTRUCTION

DOCUMENT NOT CONSIDERED FINAL UNLESS ALL SIGNATURES COMPLETED



REVISIONS

MATCH TO -Y15RPA- POT Sta. 19+00.00 - SHEET UC-7A

MATCH TO -LREY- POT Sta. 1010+00.00 - SHEET UC-7A

MATCH TO SHEET UC-7D

MATCH TO -L- POT Sta. 1023+00.00 - SHEET UC-08

NOTE: PW800 MUST BE IN SERVICE PRIOR TO EXTENDING ENCASEMENT AND CONNECTING CROSSING LINE

EXISTING DITCH BEING RETAINED TO KEEP PROPOSED DITCH INSIDE ROW. ANY OVERFLOW FROM THE EXISTING DITCH WILL ENTER THE PROPOSED DITCH. ANY ADDITIONAL DISCHARGE FROM THIS POSSIBILITY WAS ACCOUNTED FOR WHEN DESIGNING THE PROPOSED DITCH.

SPEC. CUT 2' BASE DITCH SEE DETAIL 5

ABANDON 1,281 L.F. OF 12\"/>

PROP. - 62 LF OF 12\"/>

ABANDON 298 L.F. 12\"/>

ABANDON 205 L.F. 12\"/>

ABANDON 158 L.F. 12\"/>

ABANDON 262 L.F. OF 12\"/>

ABANDON 1 UTILITY MH

ABANDON 1 UTILITY MH

ABANDON 1 UTILITY MH