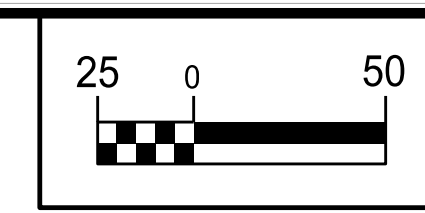


5/14/2011

THE ESTIMATED QUANTITY OF D.I. WATER PIPE FITTINGS ON THIS PLAN SHEET IS 945 POUNDS. THE ACTUAL QUANTITY AND TYPE OF FITTINGS WILL VARY BASED ON FIELD CONDITIONS.

THE ESTIMATED QUANTITY OF D.I. SEWER PIPE FITTINGS ON THIS PLAN SHEET IS 1,800 POUNDS. THE ACTUAL QUANTITY AND TYPE OF FITTINGS WILL VARY BASED ON FIELD CONDITIONS.

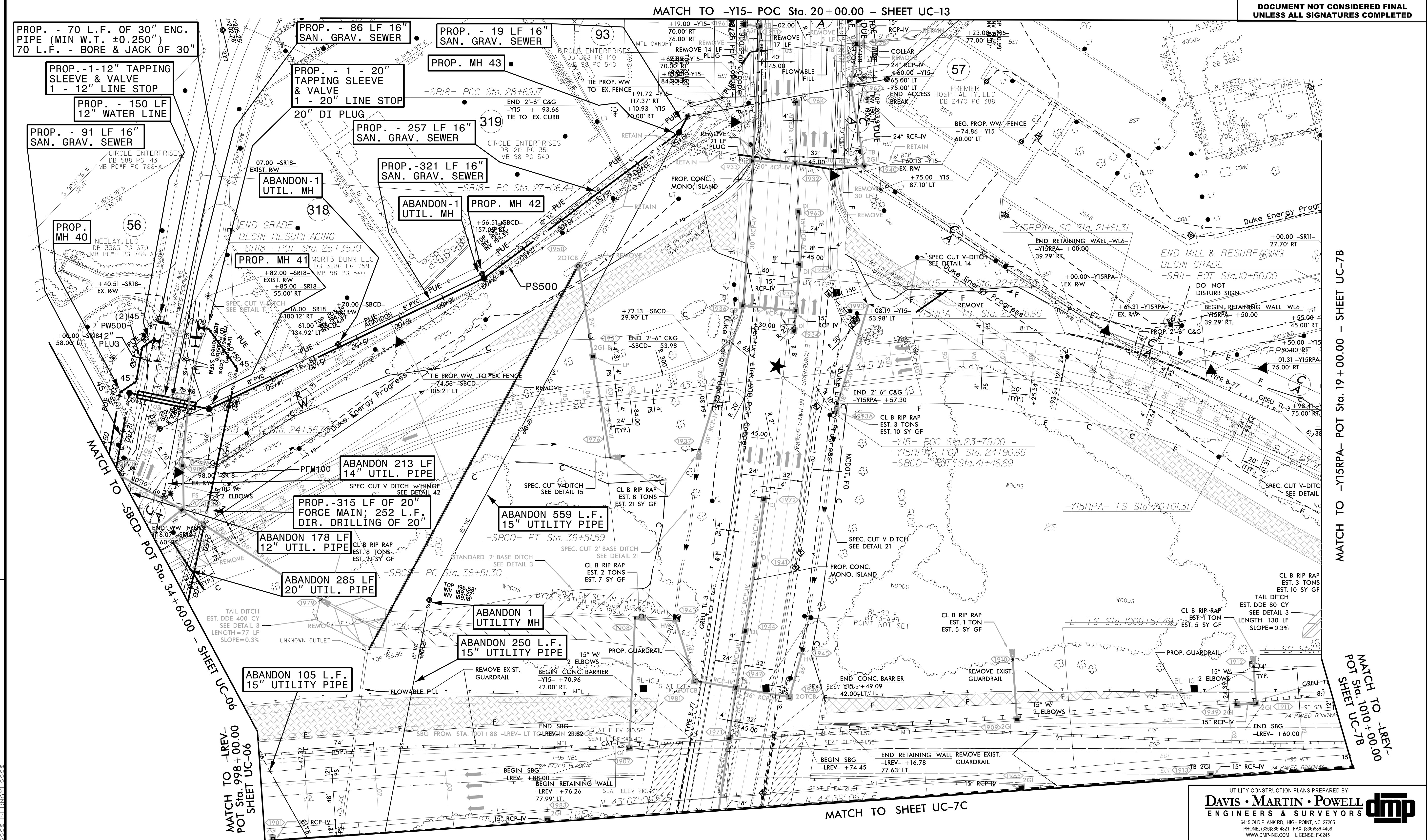
PROP. MH #	SEWER LINE PS500 STATION	DIA.	ROADWAY STATION AND OFFSET
40	12+91.06	4'	-SR18- STA. 24+66.93, 35.01 LT
41	13+76.98	4'	-SR18- STA. 24+64.58, 50.88 RT
42	16+97.62	4'	-SBCD- STA. 38+60.40, 144.52 LT
43	19+54.89	4'	-Y15- STA. 21+24.13, 128.10 RT



PROJECT REFERENCE NO. I-5878	SHEET NO. UC-7A
DESIGNED BY: DMP	
DRAWN BY: DMP	
CHECKED BY: DMP	
APPROVED BY:	
REVISID:	NORTH CAROLINA DEPARTMENT OF TRANSPORTATION
UTILITIES ENGINEERING SEC. PHONE: (919) 707-6690 FAX: (919) 250-4151	UTILITY CONSTRUCTION PLANS ONLY

UTILITY CONSTRUCTION

DOCUMENT NOT CONSIDERED FINAL UNLESS ALL SIGNATURES COMPLETED



REVISIONS

5/14/2011

MATCH TO -LREV- POT Sta. 998+00.00 SHEET UC-06

MATCH TO SHEET UC-7C

MATCH TO -Y15RPA- POT Sta. 19+00.00 - SHEET UC-7B

MATCH TO -LREV- POT Sta. 1010+00.00 SHEET UC-7B

UTILITY CONSTRUCTION PLANS PREPARED BY:

DAVIS • MARTIN • POWELL
ENGINEERS & SURVEYORS

6415 OLD PLANK RD. HIGH POINT, NC 27265
PHONE: (336) 886-4821 FAX: (336) 886-4458
WWW.DMP-INC.COM LICENSE: F-0245