

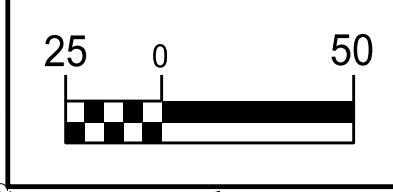
THE ESTIMATED QUANTITY OF D.I. SEWER PIPE FITTINGS ON THIS PLAN SHEET IS 1,800 POUNDS. THE ACTUAL QUANTITY AND TYPE OF FITTINGS WILL VARY BASED ON FIELD CONDITIONS.

THE ESTIMATED QUANTITY OF D.I. WATER PIPE FITTINGS ON THIS PLAN SHEET IS 2,785 POUNDS. THE ACTUAL QUANTITY AND TYPE OF FITTINGS WILL VARY BASED ON FIELD CONDITIONS.

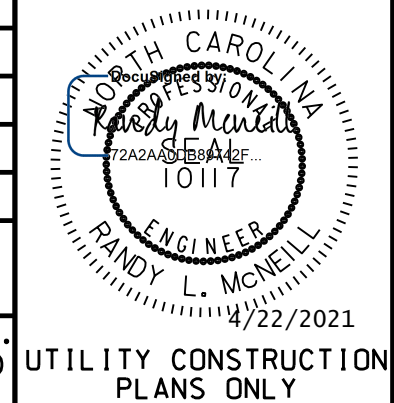
PROP. MH 39 (4' DIA. MH)  
STA. 11+99.79, LINE PS500  
-SR18- STA. 29+67.48, 26.74 LT

PROP. - 292 L.F. OF 16" SANITARY GRAVITY SEWER

PROP. MH 38 (4' DIA. MH)  
STA. 9+7.42, LINE PS500  
-SR18- STA. 20+46.35, 50.81 LT

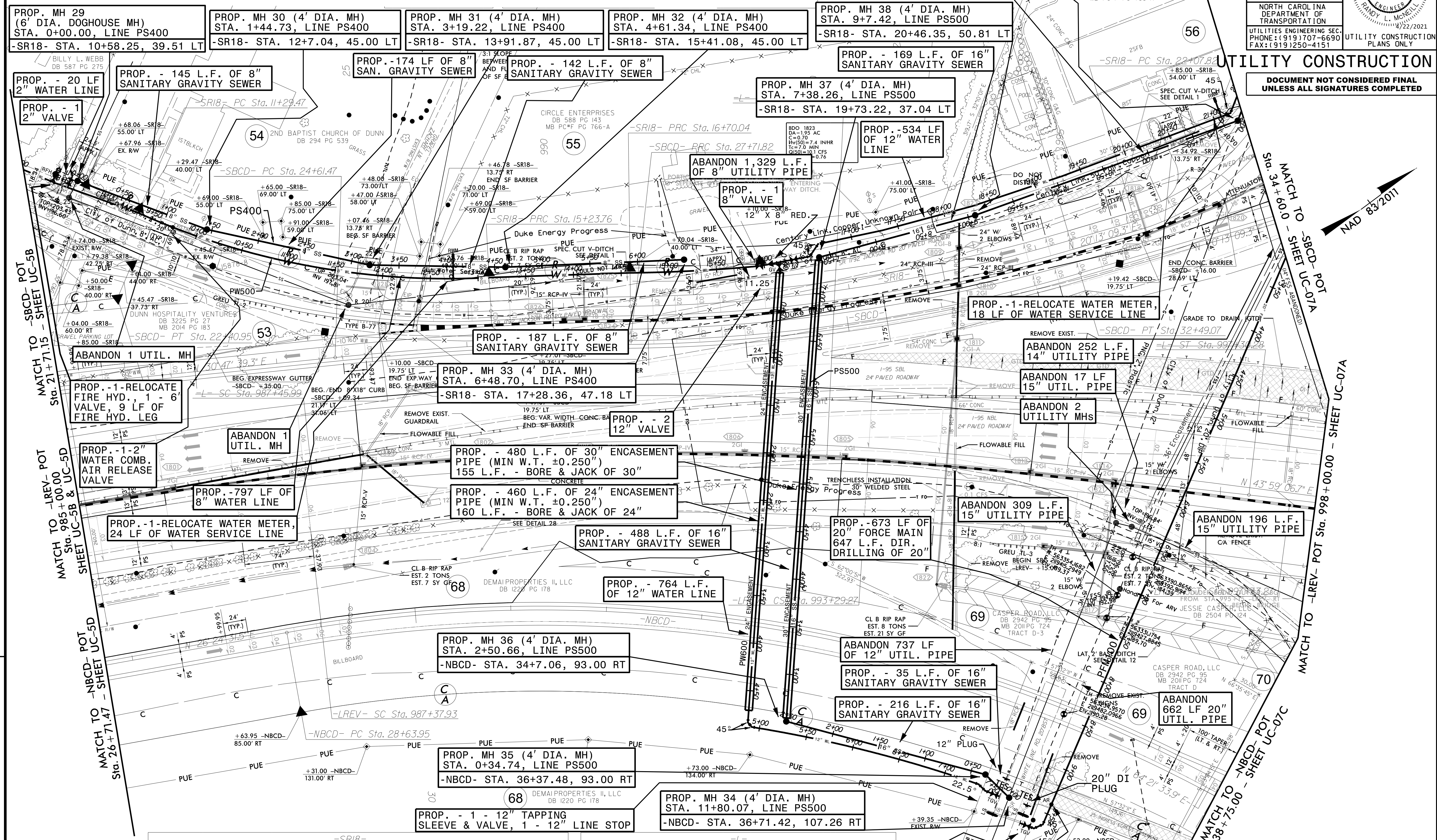


PROJECT REFERENCE NO.	SHEET NO.
I-5878	UC-06
DESIGNED BY: DMP	
DRAWN BY: DMP	
CHECKED BY: DMP	
APPROVED BY:	
REVISED:	
NORTH CAROLINA DEPARTMENT OF TRANSPORTATION	
UTILITIES ENGINEERING SEC. PHONE: (919) 707-6690 FAX: (919) 250-4151	UTILITY CONSTRUCTION PLANS ONLY



**UTILITY CONSTRUCTION**

**DOCUMENT NOT CONSIDERED FINAL UNLESS ALL SIGNATURES COMPLETED**



PROP. MH 29 (6' DIA. DOGHOUSE MH)  
STA. 0+00.00, LINE PS400  
-SR18- STA. 10+58.25, 39.51 LT

PROP. MH 30 (4' DIA. MH)  
STA. 1+44.73, LINE PS400  
-SR18- STA. 12+7.04, 45.00 LT

PROP. MH 31 (4' DIA. MH)  
STA. 3+19.22, LINE PS400  
-SR18- STA. 13+91.87, 45.00 LT

PROP. MH 32 (4' DIA. MH)  
STA. 4+61.34, LINE PS400  
-SR18- STA. 15+41.08, 45.00 LT

PROP. - 20 LF 2" WATER LINE

PROP. - 1 2" VALVE

PROP. - 145 L.F. OF 8" SANITARY GRAVITY SEWER

PROP. - 174 LF OF 8" SAN. GRAVITY SEWER

PROP. - 142 L.F. OF 8" SANITARY GRAVITY SEWER

PROP. MH 37 (4' DIA. MH)  
STA. 7+38.26, LINE PS500  
-SR18- STA. 19+73.22, 37.04 LT

PROP. - 169 L.F. OF 16" SANITARY GRAVITY SEWER

PROP. - 187 L.F. OF 8" SANITARY GRAVITY SEWER

PROP. MH 33 (4' DIA. MH)  
STA. 6+48.70, LINE PS400  
-SR18- STA. 17+28.36, 47.18 LT

PROP. - 187 L.F. OF 8" SANITARY GRAVITY SEWER

PROP. - 1 8" VALVE

PROP. - 534 LF OF 12" WATER LINE

PROP. - 1-RELOCATE WATER METER, 18 LF OF WATER SERVICE LINE

PROP. - 1-RELOCATE FIRE HYD., 1 - 6" VALVE, 9 LF OF FIRE HYD. LEG

PROP. MH 36 (4' DIA. MH)  
STA. 2+50.66, LINE PS500  
-NBCD- STA. 34+7.06, 93.00 RT

PROP. - 187 L.F. OF 8" SANITARY GRAVITY SEWER

PROP. - 2 12" VALVE

PROP. - 480 L.F. OF 30" ENCASEMENT PIPE (MIN W.T. ±0.250")  
155 L.F. - BORE & JACK OF 30"

PROP. - 1-RELOCATE WATER METER, 24 LF OF WATER SERVICE LINE

PROP. - 1-2" WATER COMB. AIR RELEASE VALVE

PROP. - 797 LF OF 8" WATER LINE

PROP. - 460 L.F. OF 24" ENCASEMENT PIPE (MIN W.T. ±0.250")  
160 L.F. - BORE & JACK OF 24"

PROP. - 488 L.F. OF 16" SANITARY GRAVITY SEWER

PROP. - 673 LF OF 20" FORCE MAIN  
647 L.F. DIR. DRILLING OF 20"

PROP. - 1-RELOCATE WATER METER, 24 LF OF WATER SERVICE LINE

PROP. - 1-2" WATER COMB. AIR RELEASE VALVE

PROP. - 797 LF OF 8" WATER LINE

PROP. - 488 L.F. OF 16" SANITARY GRAVITY SEWER

PROP. - 764 L.F. OF 12" WATER LINE

PROP. - 673 LF OF 20" FORCE MAIN  
647 L.F. DIR. DRILLING OF 20"

PROP. - 1-RELOCATE WATER METER, 24 LF OF WATER SERVICE LINE

PROP. - 1-RELOCATE WATER METER, 24 LF OF WATER SERVICE LINE

PROP. MH 35 (4' DIA. MH)  
STA. 0+34.74, LINE PS500  
-NBCD- STA. 36+37.48, 93.00 RT

PROP. - 488 L.F. OF 16" SANITARY GRAVITY SEWER

PROP. - 764 L.F. OF 12" WATER LINE

ABANDON 309 L.F. 15" UTILITY PIPE

PROP. - 1-RELOCATE WATER METER, 24 LF OF WATER SERVICE LINE

PROP. - 1-RELOCATE WATER METER, 24 LF OF WATER SERVICE LINE

PROP. MH 34 (4' DIA. MH)  
STA. 11+80.07, LINE PS500  
-NBCD- STA. 36+71.42, 107.26 RT

PROP. - 488 L.F. OF 16" SANITARY GRAVITY SEWER

PROP. - 764 L.F. OF 12" WATER LINE

ABANDON 309 L.F. 15" UTILITY PIPE

PROP. - 1-RELOCATE WATER METER, 24 LF OF WATER SERVICE LINE

PROP. - 1-RELOCATE WATER METER, 24 LF OF WATER SERVICE LINE

PROP. MH 35 (4' DIA. MH)  
STA. 0+34.74, LINE PS500  
-NBCD- STA. 36+37.48, 93.00 RT

PROP. - 488 L.F. OF 16" SANITARY GRAVITY SEWER

PROP. - 764 L.F. OF 12" WATER LINE

ABANDON 309 L.F. 15" UTILITY PIPE

PROP. - 1-RELOCATE WATER METER, 24 LF OF WATER SERVICE LINE

<p>PI Sta 13+30.38 Δ = 27° 07' 13.1" (LT) D = 6' 52' 41.7" L = 394.29' T = 200.91' R = 833.00'</p>	<p>PI Sta 15+96.91 Δ = 2° 22' 37.4" (RT) D = 1' 37' 29.8" L = 146.28' T = 73.15' R = 3,526.00'</p>	<p>PI Sta 19+05.21 Δ = 15° 40' 12.0" (LT) D = 3' 21' 09.3" L = 467.40' T = 235.17' R = 1,709.00'</p>	<p>PI Sta 23+31.00 Δ = 52° 27' 44.5" (LT) D = 22' 55' 05.9" L = 228.91' T = 123.18' R = 250.00'</p>	<p>PIs Sta 985+98.06 Δs = 3° 46' 07.6" Ls = 444.00' LT = 296.07' ST = 148.06'</p>	<p>PI Sta 990+16.71 Δ = 9° 10' 09.7" (RT) D = 1' 41' 51.5" L = 540.28' T = 270.72' R = 3,375.00'</p>	<p>PIs Sta 994+77.33 Δs = 3° 46' 07.6" Ls = 444.00' LT = 296.07' ST = 148.06'</p>	<p>PROP. - 1-20" TAP. SLEEVE &amp; VALVE 1-20" LINE STOP</p>	<p>PROP. - 1-2" SEWER COMB. AIR RELEASE VALVE</p>
--	--	--	---	---	--	---	--	---