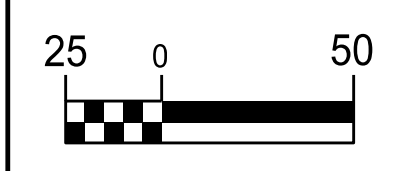


5/21/20

THE ESTIMATED QUANTITY OF D.I. WATER PIPE FITTINGS ON THIS PLAN SHEET IS 1,520 POUNDS. THE ACTUAL QUANTITY AND TYPE OF FITTINGS WILL VARY BASED ON FIELD CONDITIONS.



PROJECT REFERENCE NO. I-5878	SHEET NO. UC-5D
DESIGNED BY: DMP	
DRAWN BY: DMP	
CHECKED BY: DMP	
APPROVED BY:	
REVISED:	
NORTH CAROLINA DEPARTMENT OF TRANSPORTATION	UTILITY CONSTRUCTION PLANS ONLY
UTILITIES ENGINEERING SEC. PHONE: (919) 707-6690 FAX: (919) 250-4151	

UTILITY CONSTRUCTION

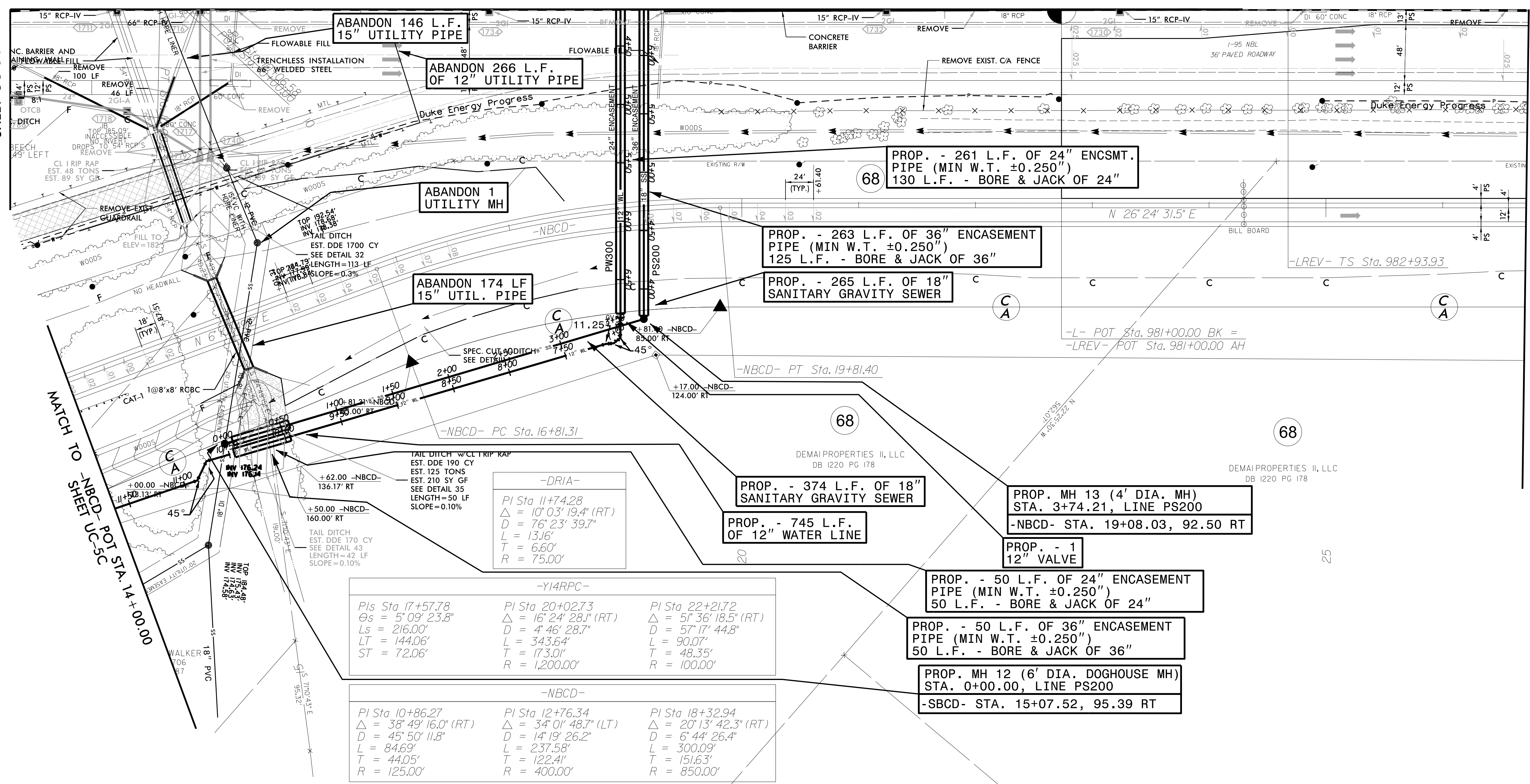
DOCUMENT NOT CONSIDERED FINAL UNLESS ALL SIGNATURES COMPLETED

MATCH TO -L- STA. 972+00.00 SHEET UC-5C

MATCH TO -L- SHEET UC-5B

MATCH TO -L- POT STA. 985+00.00 SHEET UC-06

MATCH TO -NBCD- POT STA. 26+71.4 SHEET UC-06



-DRIA-

PI Sta 11+74.28	$\Delta = 10' 03'' 19.4''$ (RT)	D = 76' 23' 39.7"	L = 13.16'	T = 6.60'	R = 75.00'
-----------------	---------------------------------	-------------------	------------	-----------	------------

-Y14RPC-

PI Sta 17+57.78	PI Sta 20+02.73	PI Sta 22+21.72
$\Delta = 5' 09'' 23.8''$	$\Delta = 16' 24'' 28.1''$ (RT)	$\Delta = 5' 36'' 18.5''$ (RT)
Ls = 216.00'	D = 4' 46' 28.7"	D = 57' 17' 44.8"
LT = 144.06'	L = 343.64'	L = 90.07'
ST = 72.06'	T = 173.01'	T = 48.35'
	R = 1,200.00'	R = 100.00'

-NBCD-

PI Sta 10+86.27	PI Sta 12+76.34	PI Sta 18+32.94
$\Delta = 38' 49'' 16.0''$ (RT)	$\Delta = 34' 01'' 48.7''$ (LT)	$\Delta = 20' 13'' 42.3''$ (RT)
D = 45' 50' 11.8"	D = 14' 19' 26.2"	D = 6' 44' 26.4"
L = 84.69'	L = 237.58'	L = 300.09'
T = 44.05'	T = 122.41'	T = 151.63'
R = 125.00'	R = 400.00'	R = 850.00'

REVISIONS

5/21/20