

5/14/23



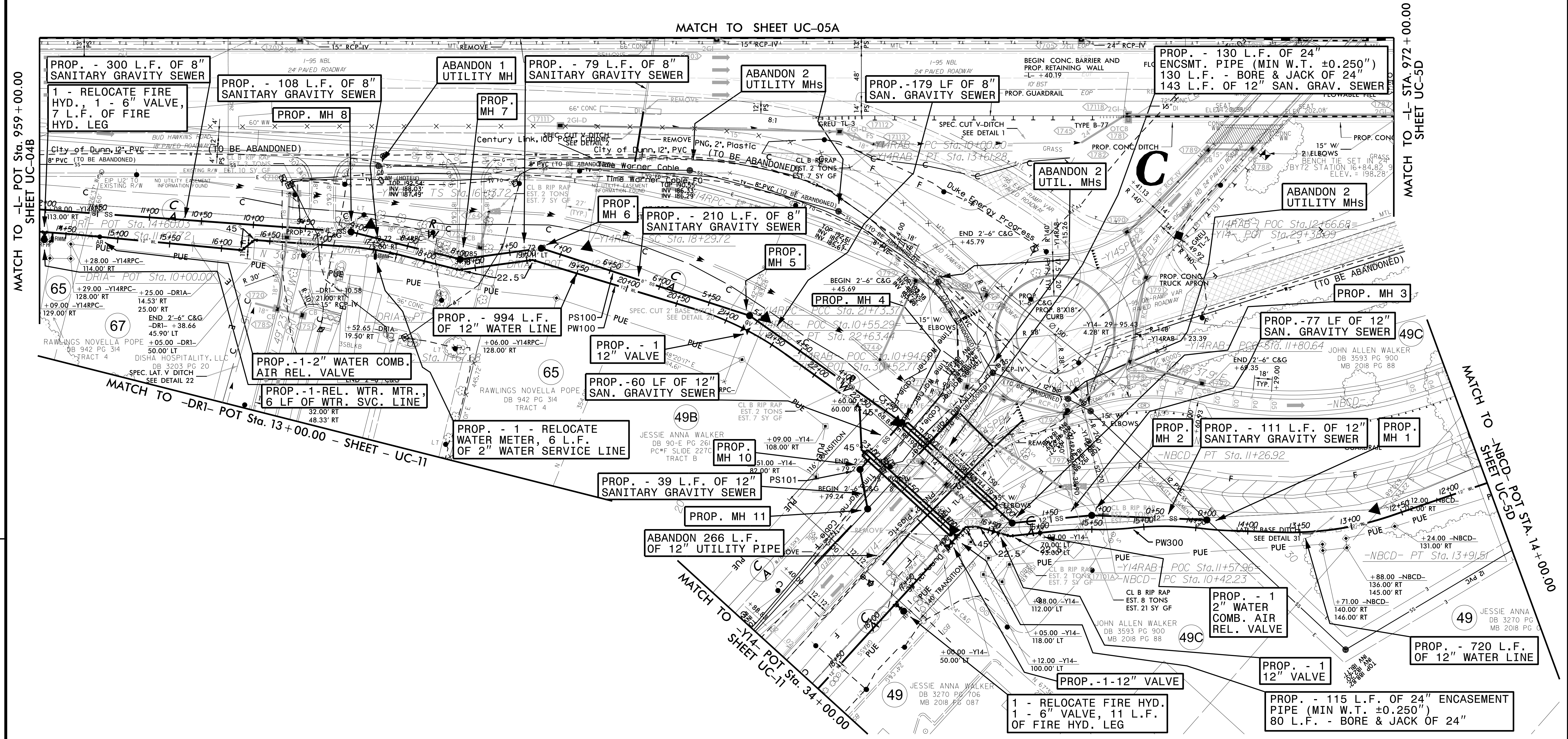
PROJECT REFERENCE NO.	SHEET NO.
I-5878	UC-5C
DESIGNED BY: DMP	
DRAWN BY: DMP	
CHECKED BY: DMP	
APPROVED BY:	
REVISED:	
UTILITIES ENGINEERING SEC. PHONE: (919) 707-6690 FAX: (919) 250-4151	UTILITY CONSTRUCTION PLANS ONLY

UTILITY CONSTRUCTION

DOCUMENT NOT CONSIDERED FINAL UNLESS ALL SIGNATURES COMPLETED

PROP. MH #	SEWER LINE PS100 STATION	DIA.	ROADWAY STATION AND OFFSET
1	0+00.00	6'	-NBCD- STA. 11+86.49, 122.51 RT
2	1+10.67	4'	-Y14RAB- STA. 11+44.33, 119.49 RT
3	1+87.40	4'	-Y14- STA. 31+56.83, 87.12 LT
4	3+30.71	4'	-Y14- STA. 31+56.83, 56.30 RT
5	5+09.26	4'	-Y14RPC- STA. 20+10.12, 102.64 RT
6	7+19.44	4'	-Y14RPC- STA. 17+83.42, 82.62 RT
7	7+97.95	4'	-Y14RPC- STA. 17+3.54, 101.35 RT
8	9+06.01	4'	-Y14RPC- STA. 15+95.54, 83.00 RT

PROP. MH #	SEWER LINE PS101 STATION	DIA.	ROADWAY STATION AND OFFSET
10	0+60.41	4'	-Y14- STA. 32+72.67, 55.42 RT
11	0+99.05	4'	-Y14- STA. 32+64.81, 24.46 RT



THE ESTIMATED QUANTITY OF D.I. WATER PIPE FITTINGS ON THIS PLAN SHEET IS 3,015 POUNDS. THE ACTUAL QUANTITY AND TYPE OF FITTINGS WILL VARY BASED ON FIELD CONDITIONS.