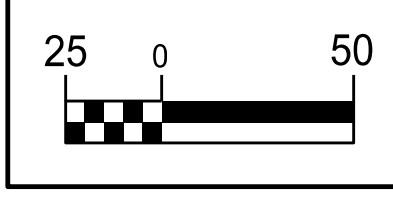


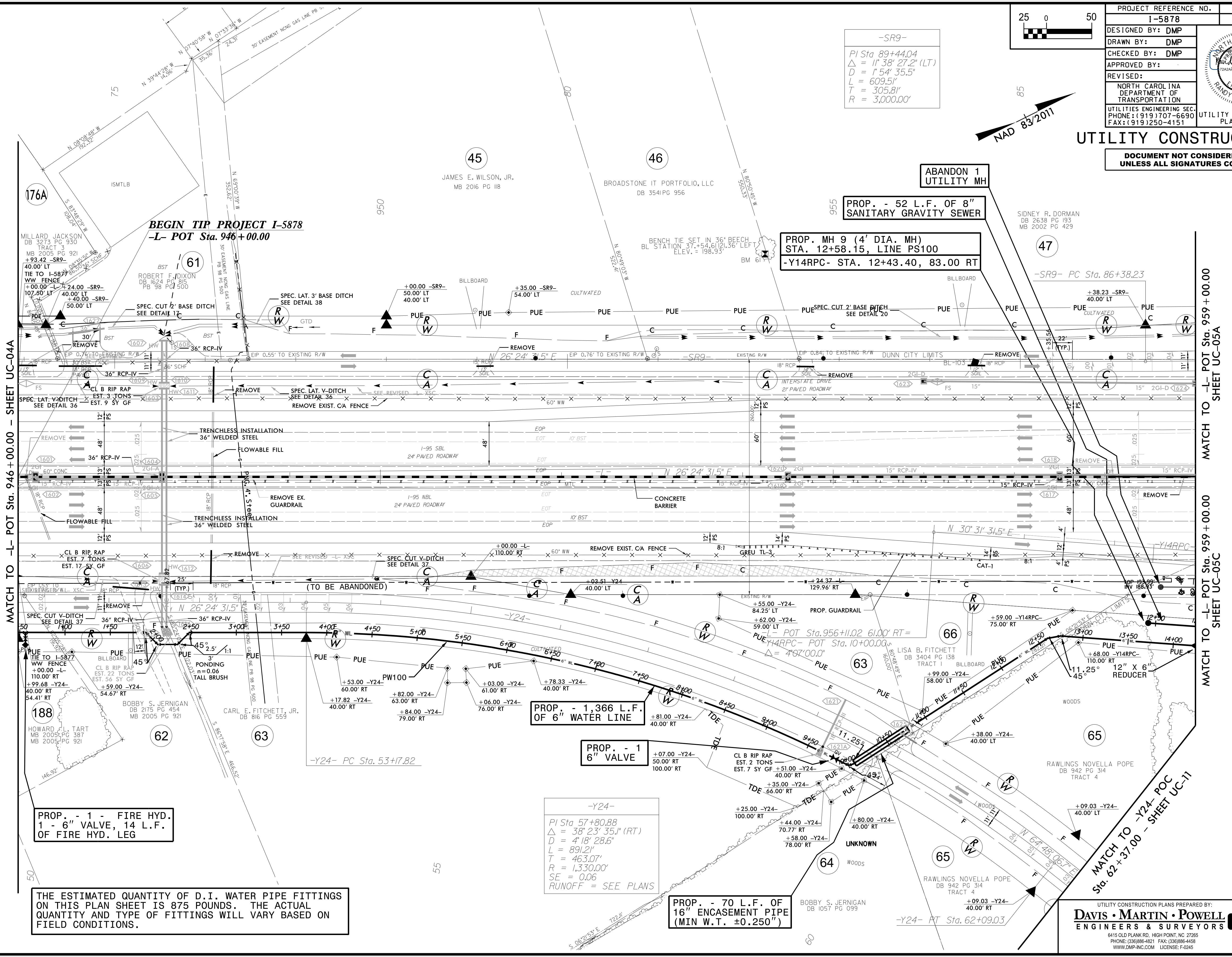
5/14/2021



PROJECT REFERENCE NO.	SHEET NO.
I-5878	UC-04B
DESIGNED BY: DMP	
DRAWN BY: DMP	
CHECKED BY: DMP	
APPROVED BY:	
REVISED:	
NORTH CAROLINA DEPARTMENT OF TRANSPORTATION	
UTILITIES ENGINEERING SEC. PHONE: (919) 707-6690 FAX: (919) 250-4151	UTILITY CONSTRUCTION PLANS ONLY

UTILITY CONSTRUCTION

DOCUMENT NOT CONSIDERED FINAL UNLESS ALL SIGNATURES COMPLETED



REVISIONS

MATCH TO -L- POT Sta. 946+00.00 - SHEET UC-04A

MATCH TO -L- POT Sta. 959+00.00 SHEET UC-05A

MATCH TO -L- POT Sta. 959+00.00 SHEET UC-05C

MATCH TO -Y24- POC Sta. 62+37.00 - SHEET UC-11

-SR9-

PI Sta 89+44.04
 $\Delta = 11' 38" 27.2" (LT)$
 $D = 1' 54" 35.5"$
 $L = 609.51'$
 $T = 305.81'$
 $R = 3,000.00'$

-Y24-

PI Sta 57+80.88
 $\Delta = 38' 23" 35.1" (RT)$
 $D = 4' 18" 28.6"$
 $L = 891.21'$
 $T = 463.07'$
 $R = 1,330.00'$
 $SE = 0.06$
 $RUNOFF = SEE PLANS$

PROP. - 1 - FIRE HYD. 1 - 6" VALVE, 14 L.F. OF FIRE HYD. LEG

THE ESTIMATED QUANTITY OF D.I. WATER PIPE FITTINGS ON THIS PLAN SHEET IS 875 POUNDS. THE ACTUAL QUANTITY AND TYPE OF FITTINGS WILL VARY BASED ON FIELD CONDITIONS.