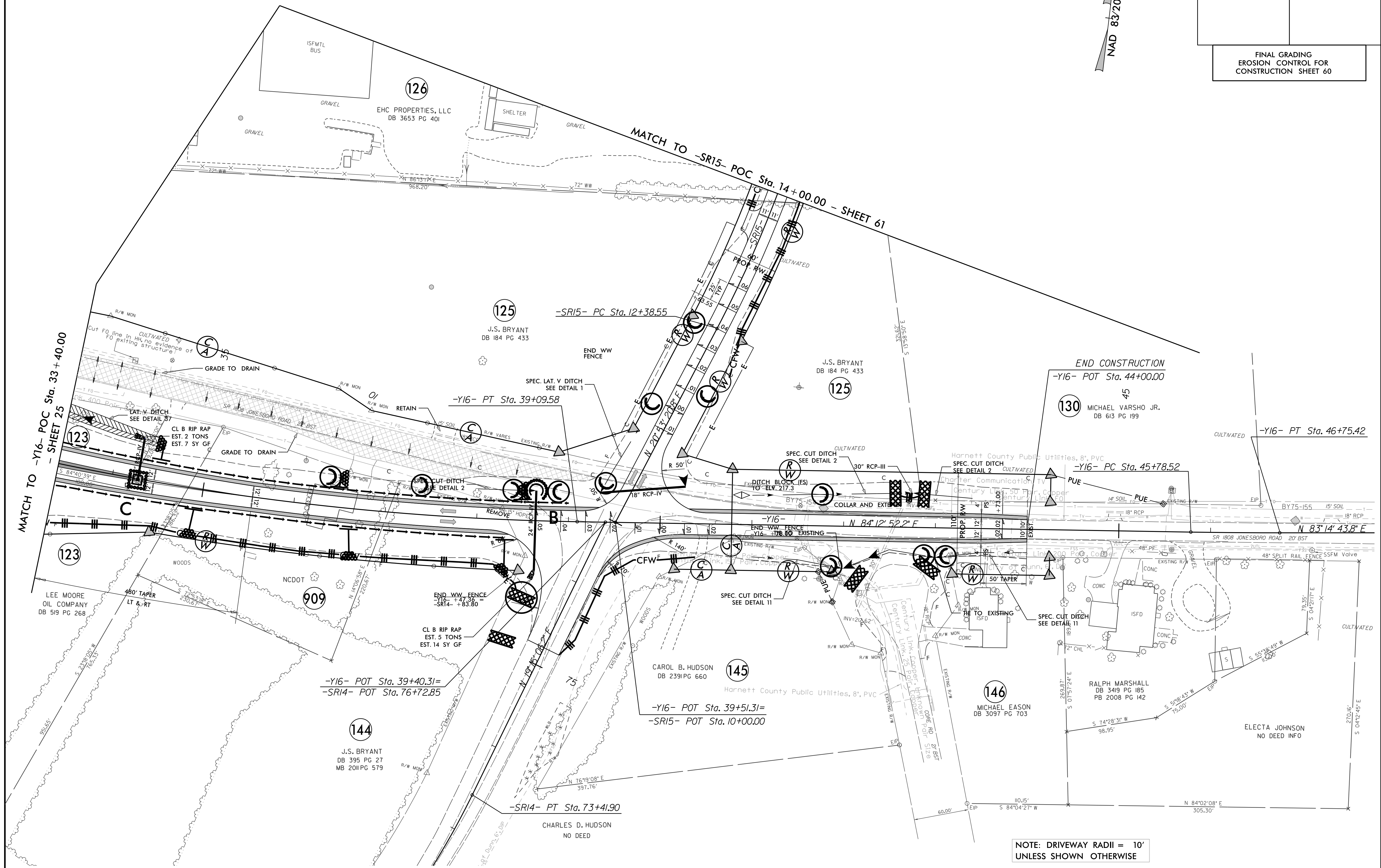


Place Matting for Erosion Control  
on Slope as Work Allows.  
Sta. 33+40 to Sta. 39+00 -Y16- LT  
Sta. 33+40 to Sta. 38+30 -Y16- RT

PROJECT REFERENCE NO. 1-5883	SHEET NO. EC-126/CONST.60
RW SHEET NO.	
ROADWAY DESIGN ENGINEER	HYDRAULICS ENGINEER
FINAL GRADING EROSION CONTROL FOR CONSTRUCTION SHEET 60	

NAD 83/2011



NOTE: DRIVEWAY RADII = 10'  
UNLESS SHOWN OTHERWISE