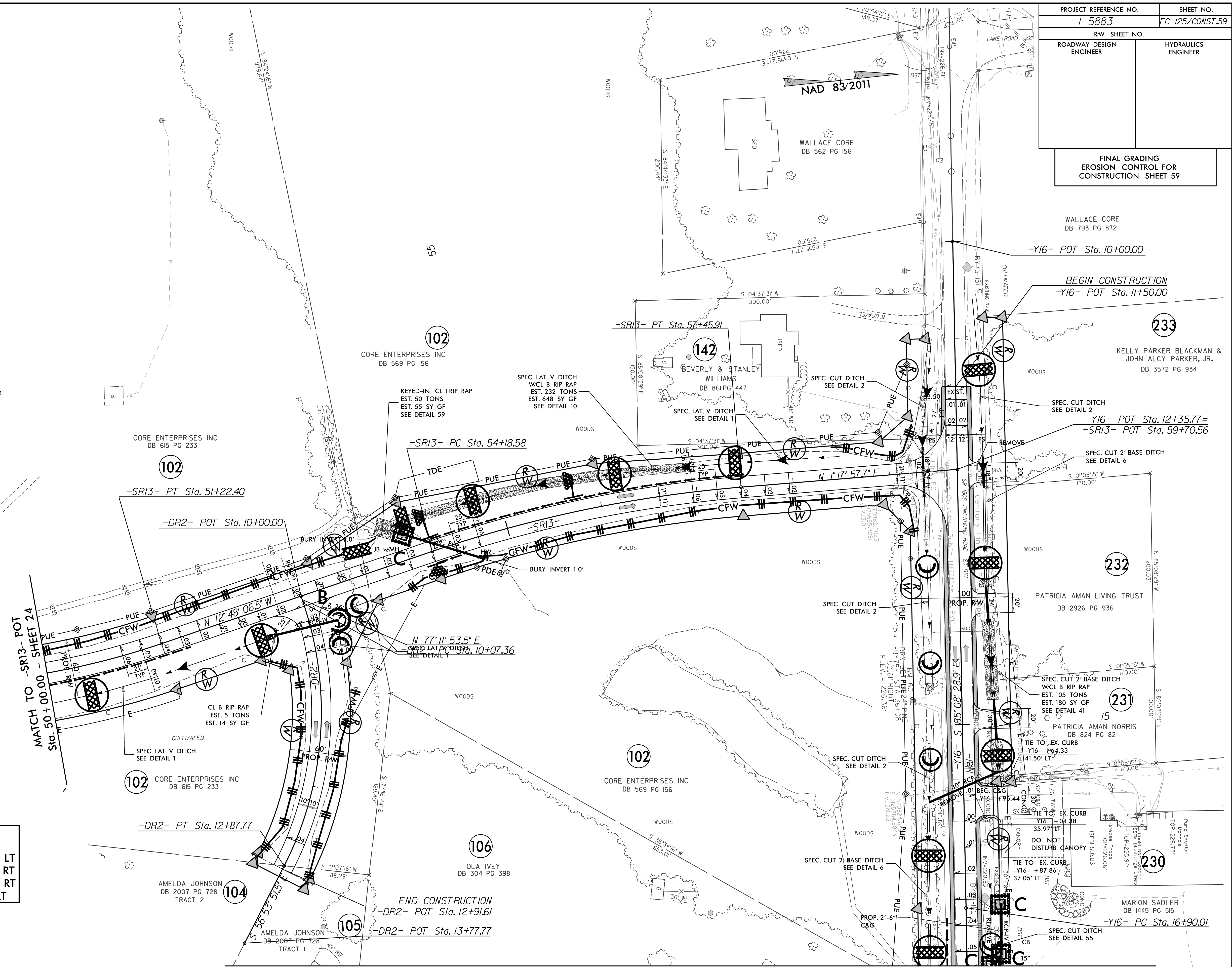


PROJECT REFERENCE NO. 1-5883	SHEET NO. EC-125/CONST.59
RW SHEET NO.	
ROADWAY DESIGN ENGINEER	HYDRAULICS ENGINEER
FINAL GRADING EROSION CONTROL FOR CONSTRUCTION SHEET 59	

Place Matting for Erosion Control on Slope as Work Allows.  
 Sta. 54+00 to Sta. 57+50 -SR13- LT  
 Sta. 50+50 to Sta. 51+50 -SR13- RT  
 Sta. 54+00 to Sta. 54+50 -SR13- RT  
 Sta. 17+00 to Sta. 17+50 -Y16- RT

NOTE: DRIVEWAY RADII = 10'  
 UNLESS SHOWN OTHERWISE



MATCH TO -Y16- POC Sta. 17+50.00 - SHEET 25