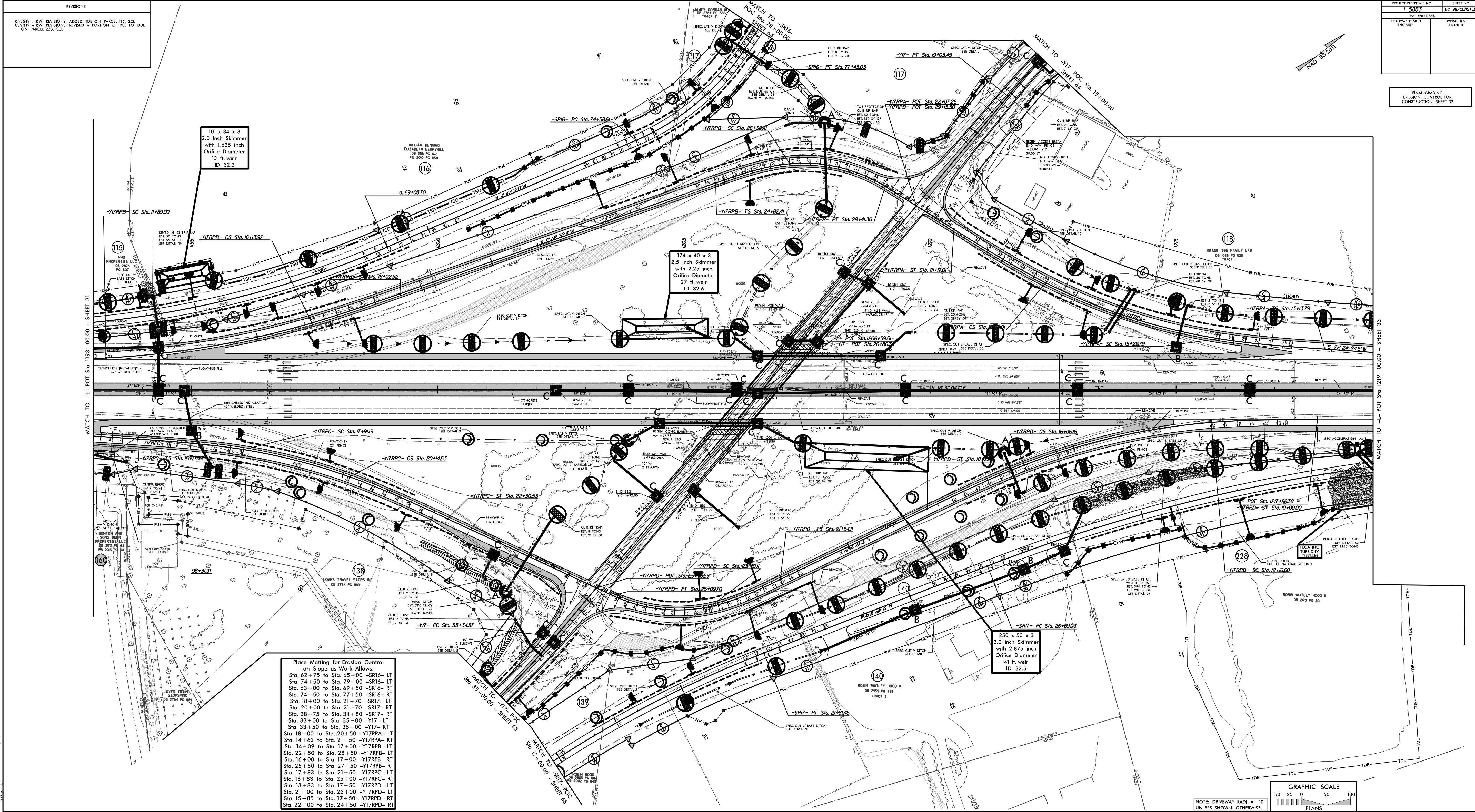


REVISIONS	
04/25/19 - RW	REVISIONS: ADDED TDE ON PARCEL 116, SCL
02/22/19 - RW	REVISIONS: REVISED A PORTION OF PUE TO DUE ON PARCEL 228, SCL

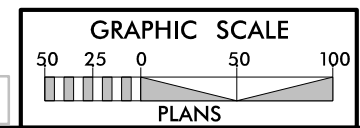
PROJECT REFERENCE NO.	7-5687
SHEET NO.	EC-98/CWST-32
R/W SHEET NO.	
ROADWAY DESIGN ENGINEER	HYDRAULICS ENGINEER

FINAL GRADING
EROSION CONTROL FOR
CONSTRUCTION SHEET 32



Place Matting for Erosion Control on Slope as Work Allows.

Sta. 62+75 to Sta. 65+00	-SR16- LT
Sta. 74+50 to Sta. 79+00	-SR16- LT
Sta. 63+00 to Sta. 69+50	-SR16- RT
Sta. 74+50 to Sta. 77+50	-SR16- RT
Sta. 18+00 to Sta. 21+70	-SR17- LT
Sta. 20+00 to Sta. 21+70	-SR17- RT
Sta. 28+75 to Sta. 34+80	-SR17- RT
Sta. 33+00 to Sta. 35+00	-Y17- LT
Sta. 33+50 to Sta. 35+00	-Y17- RT
Sta. 18+00 to Sta. 20+50	-Y17RPA- LT
Sta. 14+02 to Sta. 21+50	-Y17RPA- RT
Sta. 14+09 to Sta. 17+00	-Y17RPA- LT
Sta. 22+50 to Sta. 28+50	-Y17RPA- LT
Sta. 16+00 to Sta. 17+00	-Y17RPA- RT
Sta. 25+50 to Sta. 27+50	-Y17RPA- RT
Sta. 17+83 to Sta. 21+50	-Y17RPC- LT
Sta. 16+83 to Sta. 25+00	-Y17RPC- RT
Sta. 13+83 to Sta. 17+50	-Y17RPD- LT
Sta. 21+00 to Sta. 25+00	-Y17RPD- LT
Sta. 15+85 to Sta. 17+50	-Y17RPD- RT
Sta. 22+00 to Sta. 24+50	-Y17RPD- RT



NOTE: DRIVEWAY RADII = 10'
UNLESS SHOWN OTHERWISE