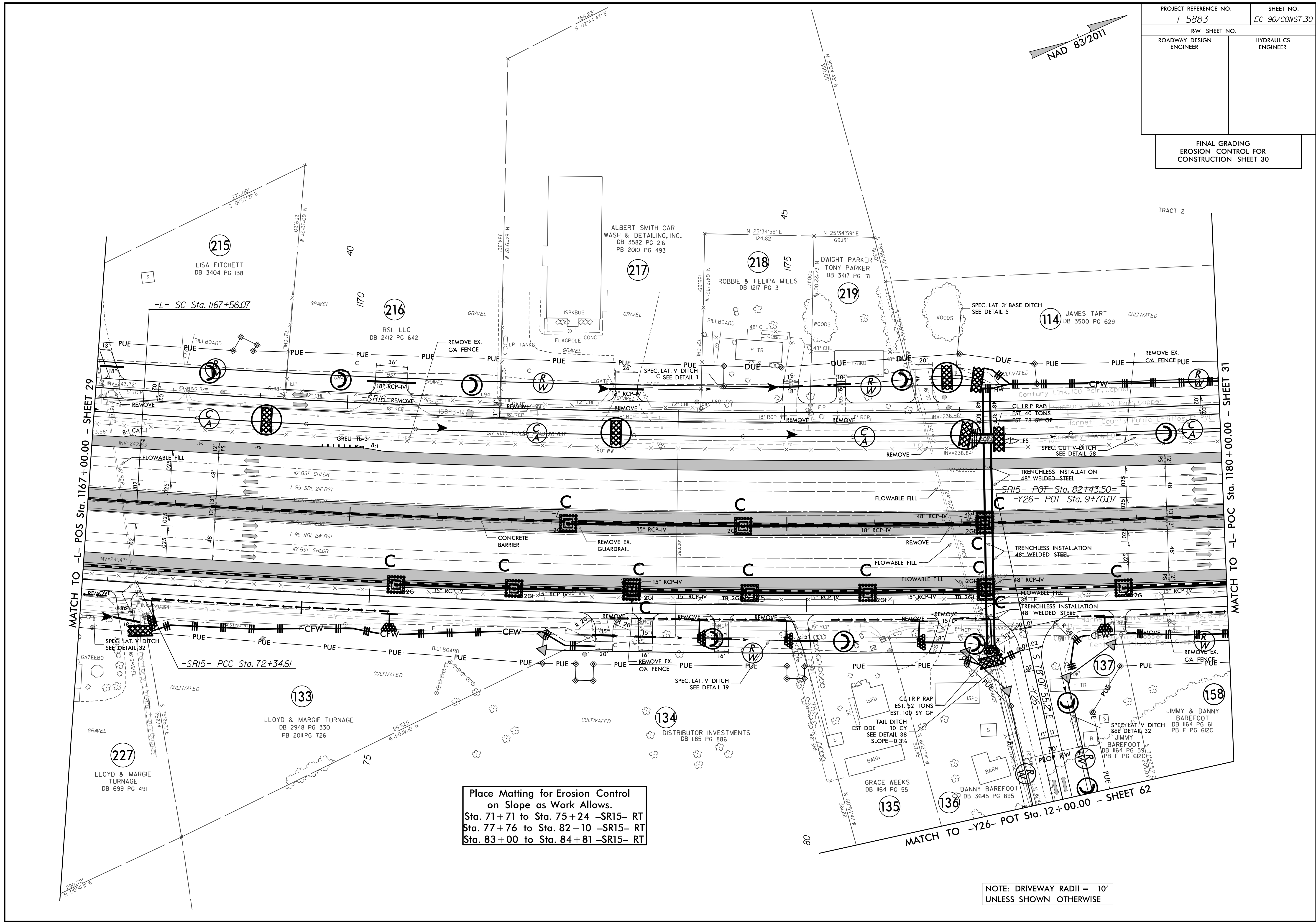


PROJECT REFERENCE NO.	SHEET NO.
1-5883	EC-96/CONST.30
RW SHEET NO.	
ROADWAY DESIGN ENGINEER	HYDRAULICS ENGINEER
FINAL GRADING EROSION CONTROL FOR CONSTRUCTION SHEET 30	



Place Matting for Erosion Control on Slope as Work Allows.
 Sta. 71+71 to Sta. 75+24 -SR15- RT
 Sta. 77+76 to Sta. 82+10 -SR15- RT
 Sta. 83+00 to Sta. 84+81 -SR15- RT

NOTE: DRIVEWAY RADII = 10'
 UNLESS SHOWN OTHERWISE