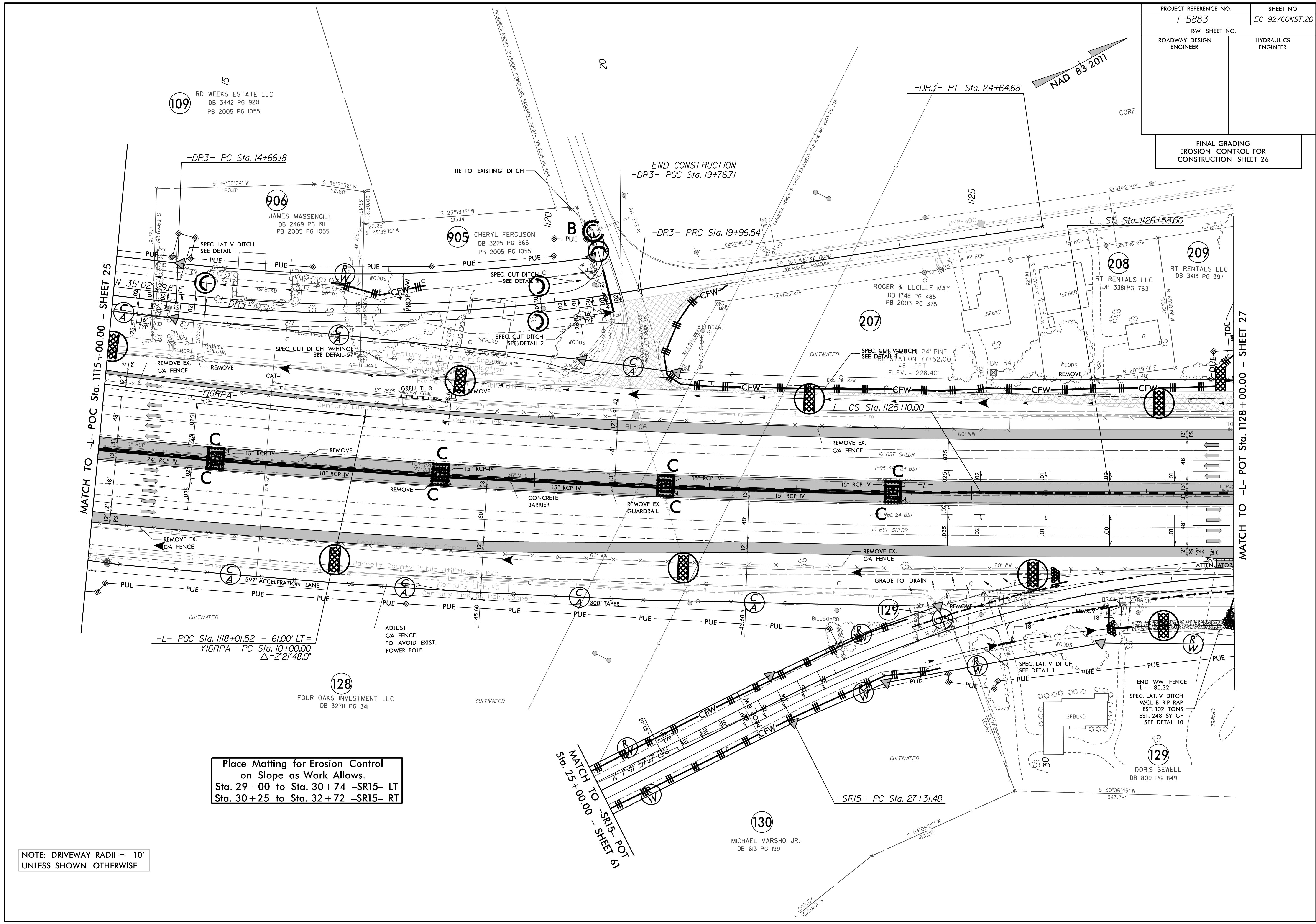


PROJECT REFERENCE NO.		SHEET NO.	
1-5883		EC-92/CONST.26	
RW SHEET NO.			
ROADWAY DESIGN ENGINEER		HYDRAULICS ENGINEER	
FINAL GRADING EROSION CONTROL FOR CONSTRUCTION SHEET 26			



NOTE: DRIVEWAY RADII = 10'
UNLESS SHOWN OTHERWISE

Place Matting for Erosion Control
on Slope as Work Allows.
Sta. 29+00 to Sta. 30+74 -SR15- LT
Sta. 30+25 to Sta. 32+72 -SR15- RT

MATCH TO -L- POC Sta. 1115+00.00 - SHEET 25

MATCH TO -L- POT Sta. 1128+00.00 - SHEET 27

MATCH TO -SR15- POT
Sta. 25+00.00 - SHEET 61

109

906

905

207

208

209

128

129

129

130

RD WEEKS ESTATE LLC
DB 3442 PG 920
PB 2005 PG 1055

JAMES MASSENGILL
DB 2469 PG 191
PB 2005 PG 1055

CHERYL FERGUSON
DB 3225 PG 866
PB 2005 PG 1055

ROGER & LUCILLE MAY
DB 1748 PG 485
PB 2003 PG 375

RT RENTALS LLC
DB 3381 PG 763

RT RENTALS LLC
DB 3413 PG 397

FOUR OAKS INVESTMENT LLC
DB 3278 PG 341

DORIS SEWELL
DB 809 PG 849

MICHAEL VARSHO JR.
DB 613 PG 199

