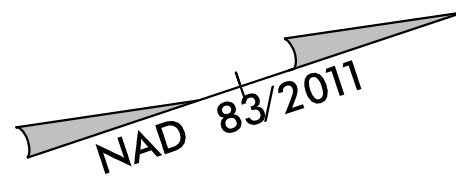
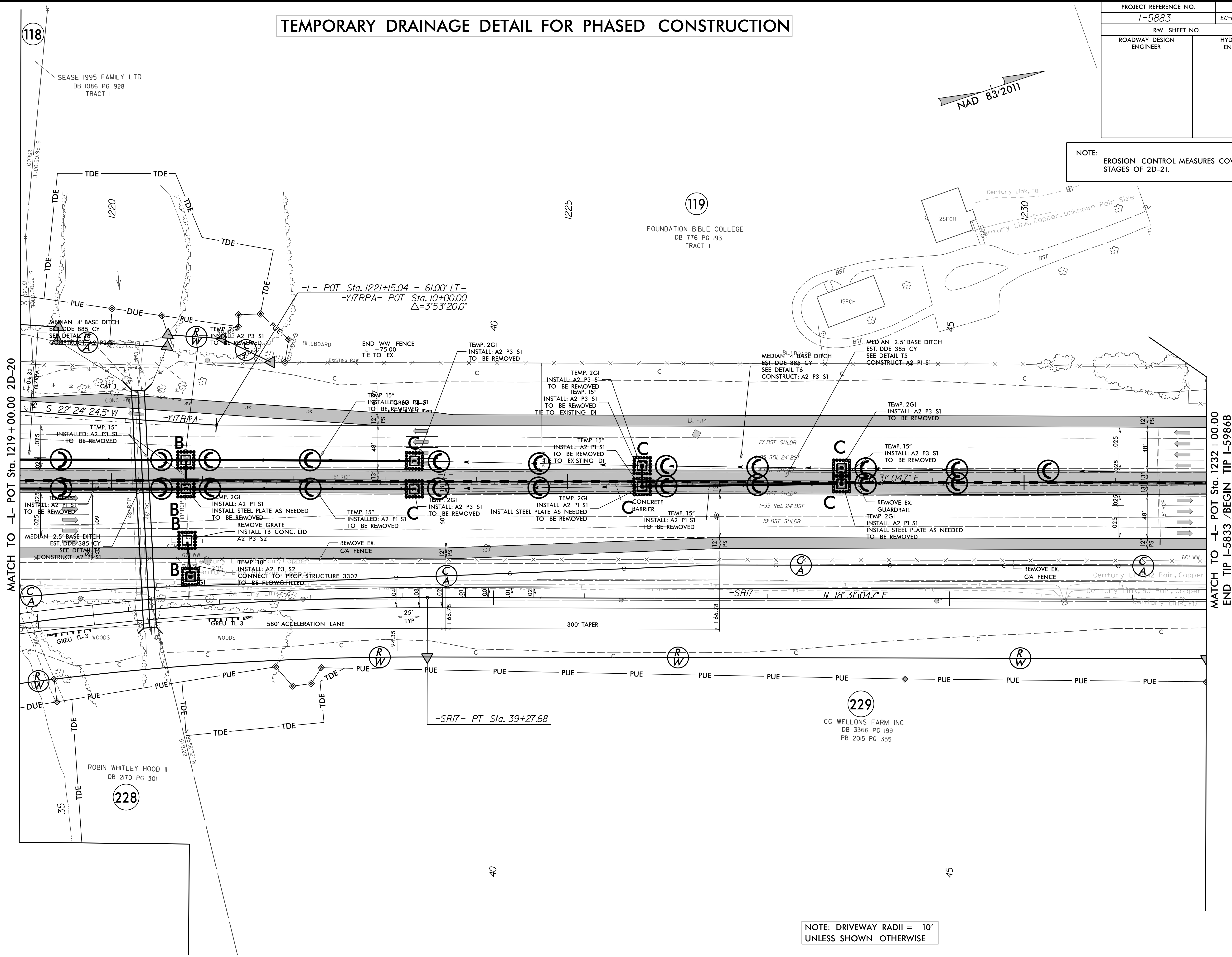


TEMPORARY DRAINAGE DETAIL FOR PHASED CONSTRUCTION

PROJECT REFERENCE NO. 1-5883	SHEET NO. EC-695/CONST 2D-21
RW SHEET NO.	
ROADWAY DESIGN ENGINEER	HYDRAULICS ENGINEER



NOTE:
EROSION CONTROL MEASURES COVERING ALL STAGES OF 2D-21.



MATCH TO -L- POT Sta. 1219 + 00.00 2D-20

MATCH TO -L- POT Sta. 1232 + 00.00
END TIP I-5833 /BEGIN TIP I-5986B

NOTE: DRIVEWAY RADII = 10'
UNLESS SHOWN OTHERWISE