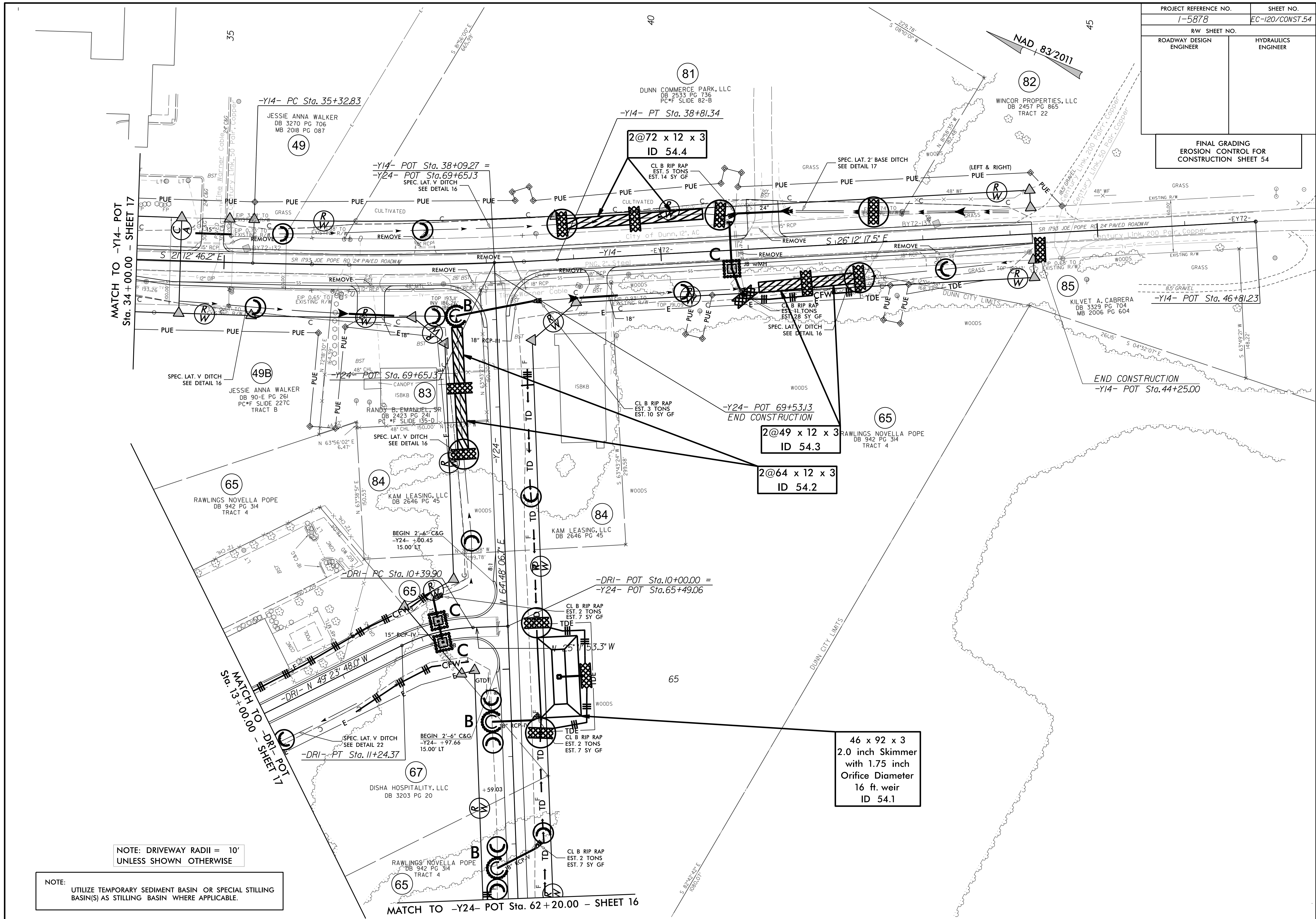


| | |
|---|---------------------|
| PROJECT REFERENCE NO. | SHEET NO. |
| 1-5878 | EC-120/CONST.54 |
| RW SHEET NO. | |
| ROADWAY DESIGN ENGINEER | HYDRAULICS ENGINEER |
| FINAL GRADING EROSION CONTROL FOR CONSTRUCTION SHEET 54 | |



MATCH TO -Y14- POT
Sta. 34+00.00 - SHEET 17

MATCH TO -DRI- POT
Sta. 13+00.00 - SHEET 17

MATCH TO -Y24- POT Sta. 62+20.00 - SHEET 16

NOTE: DRIVEWAY RADII = 10'
UNLESS SHOWN OTHERWISE

NOTE:
UTILIZE TEMPORARY SEDIMENT BASIN OR SPECIAL STILLING
BASIN(S) AS STILLING BASIN WHERE APPLICABLE.

46 x 92 x 3
2.0 inch Skimmer
with 1.75 inch
Orifice Diameter
16 ft. weir
ID 54.1

2@49 x 12 x 3
ID 54.3

2@64 x 12 x 3
ID 54.2

2@72 x 12 x 3
ID 54.4

END CONSTRUCTION
-Y14- POT Sta. 44+25.00

-Y24- POT 69+53.13
END CONSTRUCTION

-DRI- POT Sta. 10+00.00 =
-Y24- POT Sta. 65+49.06

-DRI- PT Sta. 11+24.37

-DRI- PC Sta. 10+39.90

-Y24- POT Sta. 69+65.13

-Y14- POT Sta. 38+09.27 =
-Y24- POT Sta. 69+65.13

-Y14- PT Sta. 38+81.34

-Y14- PC Sta. 35+32.83

-Y14- POT Sta. 46+81.23

NAD 83/2011

DUNN CITY LIMITS

DUNN COMMERCE PARK, LLC
DB 2533 PG 736
PC*F SLIDE 82-B

WINCOR PROPERTIES, LLC
DB 2457 PG 865
TRACT 22

JESSIE ANNA WALKER
DB 3270 PG 706
MB 2018 PG 087

JESSIE ANNA WALKER
DB 90-E PG 261
PC*F SLIDE 227C
TRACT B

RANDY D. EMANUEL, SR.
DB 2423 PG 241
PC*F SLIDE 135-D

RAWLINGS NOVELLA POPE
DB 942 PG 314
TRACT 4

KAM LEASING, LLC
DB 2646 PG 45

KAM LEASING, LLC
DB 2646 PG 45

DISHA HOSPITALITY, LLC
DB 3203 PG 20

RAWLINGS NOVELLA POPE
DB 942 PG 314
TRACT 4