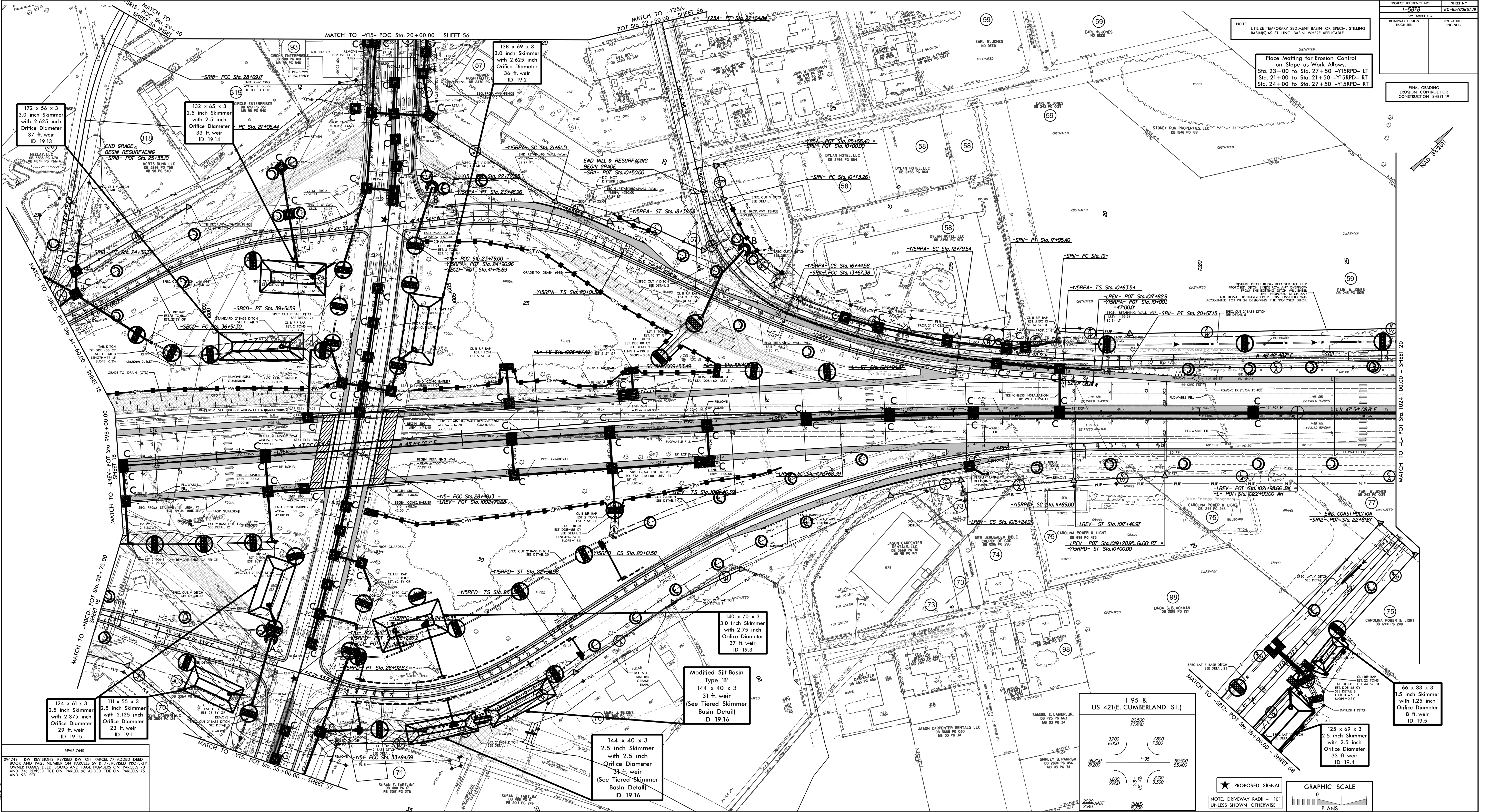


PROJECT REFERENCE NO.	SHEET NO.
1-5878	EC-85/CONSTR
ROADWAY DESIGN ENGINEER	HYDRAULICS ENGINEER
FINAL GRADING EROSION CONTROL FOR CONSTRUCTION SHEET 19	

NOTE: UTILIZE TEMPORARY SEDIMENT BASIN OR SPECIAL STILING BASINS AS STILING BASIN WHERE APPLICABLE

Place Matting for Erosion Control on Slope as Work Allows.  
Sta. 23+00 to Sta. 27+50 -Y15RFD-LT  
Sta. 21+00 to Sta. 21+50 -Y15RFD-RT  
Sta. 24+00 to Sta. 27+50 -Y15RFD-RT



REVISIONS  
09/17/17 - REV. REVISIONS REVERSED SIGN ON PARCEL 77; ADDED GREEN BOOK AND PAGE NUMBER ON PARCELS 59 & 77; REVERSED PROPERTY OWNER NAMES (GREEN BOOK) AND PAGE NUMBERS ON PARCELS 73 AND 74; REVERSED TICE ON PARCEL 98; ADDED TICE ON PARCELS 75 AND 98. SEE 1.

124 x 61 x 3  
2.5 inch Skimmer  
with 2.375 inch  
Orifice Diameter  
29 ft. weir  
ID 19.15

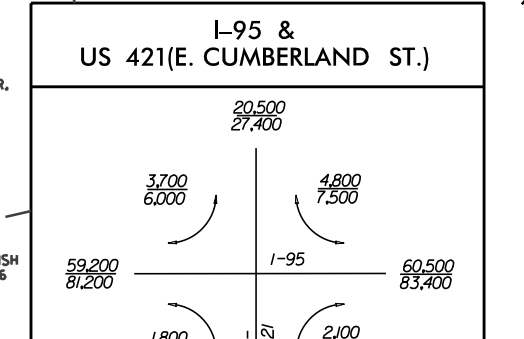
111 x 55 x 3  
2.5 inch Skimmer  
with 2.125 inch  
Orifice Diameter  
23 ft. weir  
ID 19.1

144 x 40 x 3  
2.5 inch Skimmer  
with 2.5 inch  
Orifice Diameter  
31 ft. weir  
(See Tiered Skimmer  
Basin Detail)  
ID 19.16

Modified Silt Basin  
Type 'B'  
144 x 40 x 3  
31 ft. weir  
(See Tiered Skimmer  
Basin Detail)  
ID 19.16

140 x 70 x 3  
3.0 inch Skimmer  
with 2.75 inch  
Orifice Diameter  
37 ft. weir  
ID 19.3

66 x 33 x 3  
1.5 inch Skimmer  
with 1.25 inch  
Orifice Diameter  
8 ft. weir  
ID 19.5



★ PROPOSED SIGNAL  
NOTE: DRIVEWAY RADII = 10' UNLESS SHOWN OTHERWISE

GRAPHIC SCALE  
PLANS