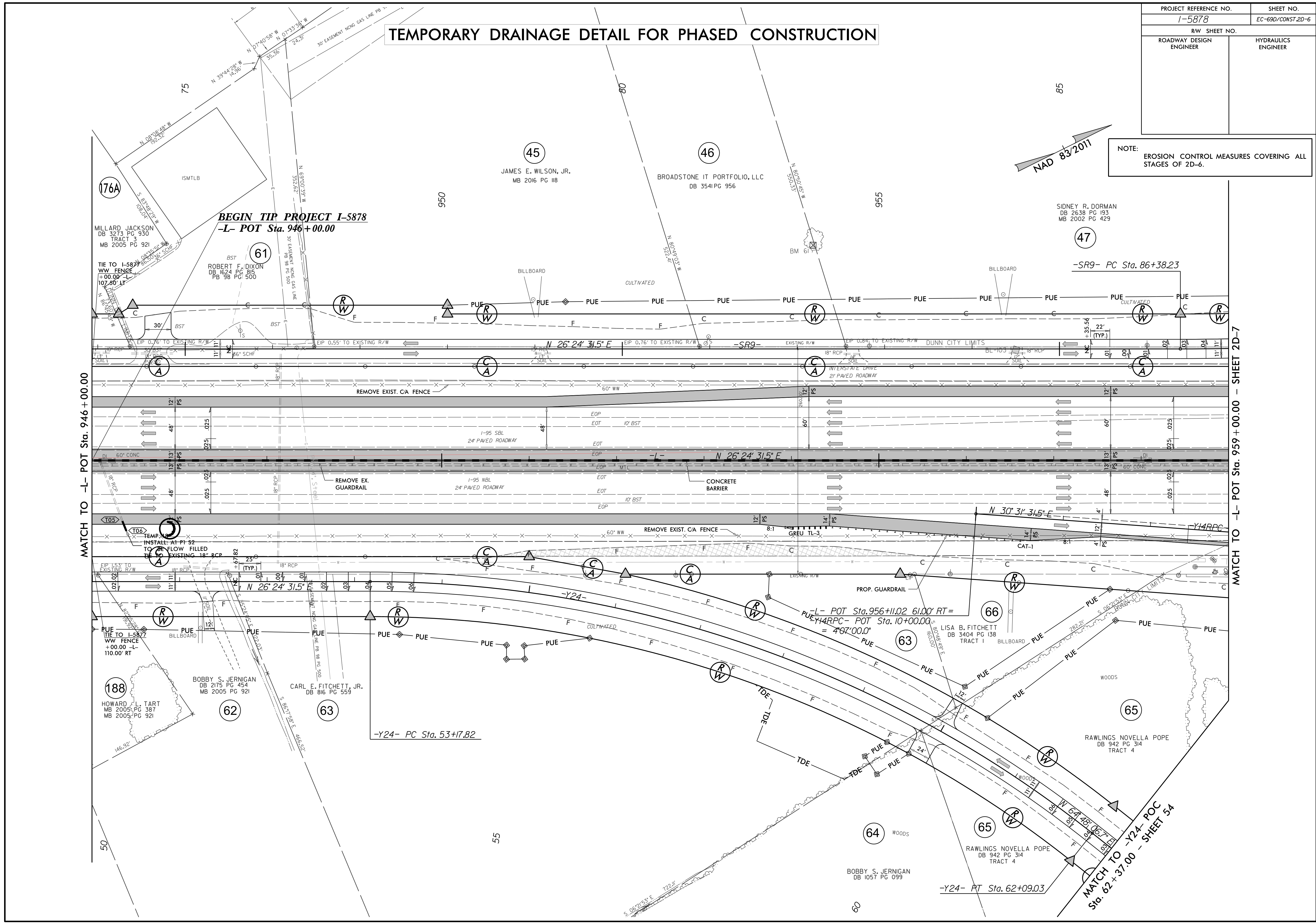


TEMPORARY DRAINAGE DETAIL FOR PHASED CONSTRUCTION

PROJECT REFERENCE NO.	SHEET NO.
1-5878	EC-69D/CONST.2D-6
RW SHEET NO.	
ROADWAY DESIGN ENGINEER	HYDRAULICS ENGINEER

NOTE:
EROSION CONTROL MEASURES COVERING ALL STAGES OF 2D-6.



MATCH TO -L- POT Sta. 946+00.00

MATCH TO -L- POT Sta. 959+00.00 - SHEET 2D-7

MATCH TO -Y24- POC Sta. 62+37.00 - SHEET 54

BEGIN TIP PROJECT 1-5878
-L- POT Sta. 946+00.00

-L- POT Sta. 956+11.02 61.00' RT =
PUE-Y44RPC- POT Sta. 10+00.00
= 497'00.0'

-Y24- PC Sta. 53+17.82

-Y24- PT Sta. 62+09.03

-SR9- PC Sta. 86+38.23

MILLARD JACKSON
DB 3273 PG 930
TRACT
MB 2005 PG 921

ROBERT F. DIXON
DB 1624 PG 915
PB 98 PG 500

JAMES E. WILSON, JR.
MB 2016 PG 118

BROADSTONE IT PORTFOLIO, LLC
DB 3541 PG 956

SIDNEY R. DORMAN
DB 2638 PG 193
MB 2002 PG 429

HOWARD L. TART
MB 2005 PG 387
MB 2005 PG 921

BOBBY S. JERNIGAN
DB 2175 PG 454
MB 2005 PG 921

CARL E. FITCHETT, JR.
DB 816 PG 559

BOBBY S. JERNIGAN
DB 1057 PG 099

RAWLINGS NOVELLA POPE
DB 942 PG 314
TRACT 4

RAWLINGS NOVELLA POPE
DB 942 PG 314
TRACT 4

LISA B. FITCHETT
DB 3404 PG 138
TRACT 1

176A

61

45

46

47

188

62

63

63

66

64

65

65

60

50

55

950

955

85

75

S. 06°21'53" E 722.11'

