

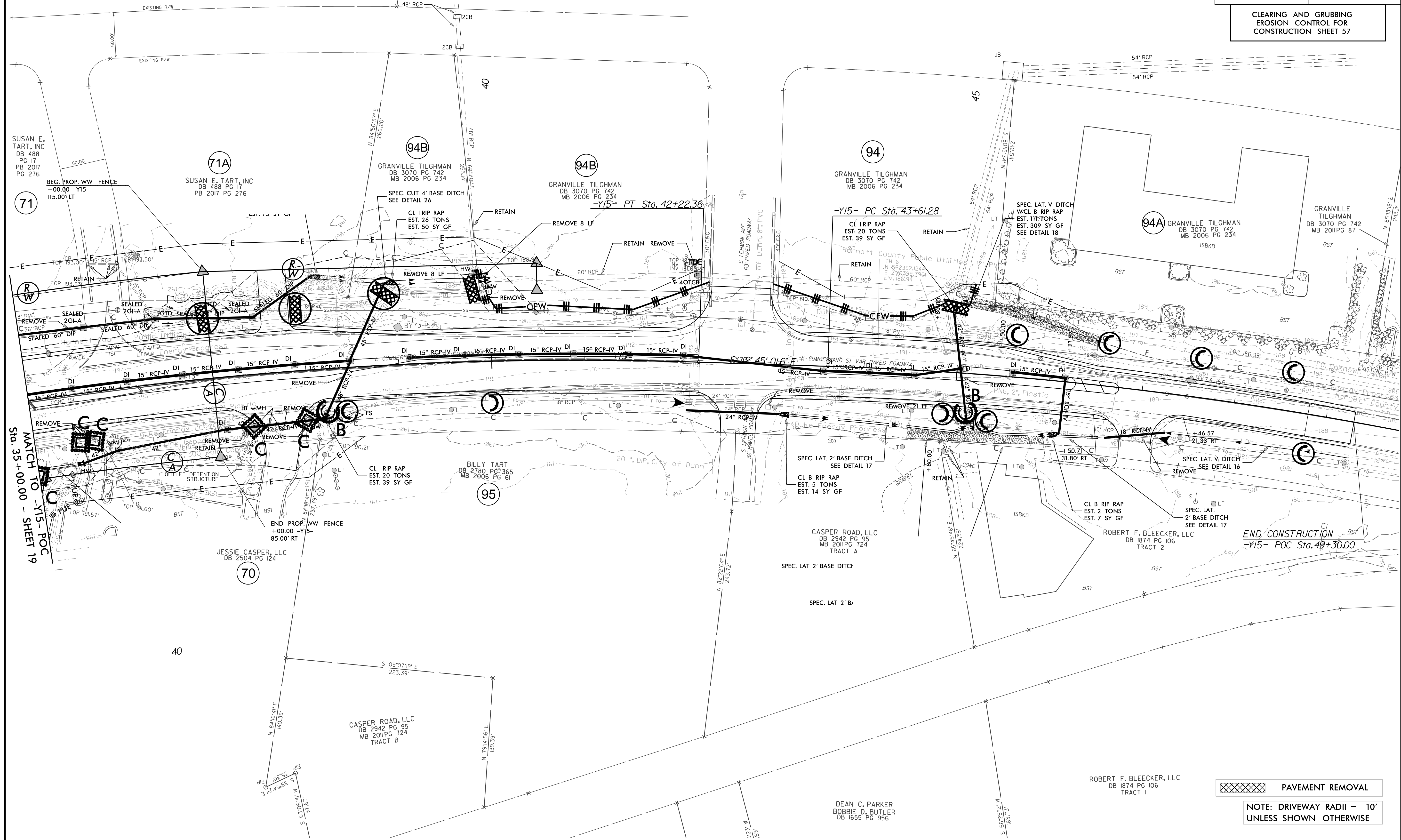
PROJECT REFERENCE NO.	SHEET NO.
1-5878	EC-57/CONST.57
RW SHEET NO.	
ROADWAY DESIGN ENGINEER	HYDRAULICS ENGINEER

CLEARING AND GRUBBING  
EROSION CONTROL FOR  
CONSTRUCTION SHEET 57

NOTE:  
UTILIZE FABRIC INSERT INLET PROTECTION DEVICES IN LIEU OF  
ROCK INLET SEDIMENT TRAPS, TYPE-C AS DIRECTED TO AVOID  
IMPOUNDMENT OF RUNOFF IN ROADWAY OPEN TO TRAFFIC.

NOTE:  
PLACE TEMPORARY ROCK SEDIMENT DAMS TYPE - B  
AND TEMPORARY ROCK SILT CHECKS TYPE - A AT  
DRAINAGE OUTLETS.

NAD 83/2001



MATCH TO -Y15- POC  
Sta. 35+00.00 - SHEET 19

END CONSTRUCTION  
-Y15- POC Sta. 49+30.00

XXXXXXXXXX PAVEMENT REMOVAL

NOTE: DRIVEWAY RADII = 10'  
UNLESS SHOWN OTHERWISE