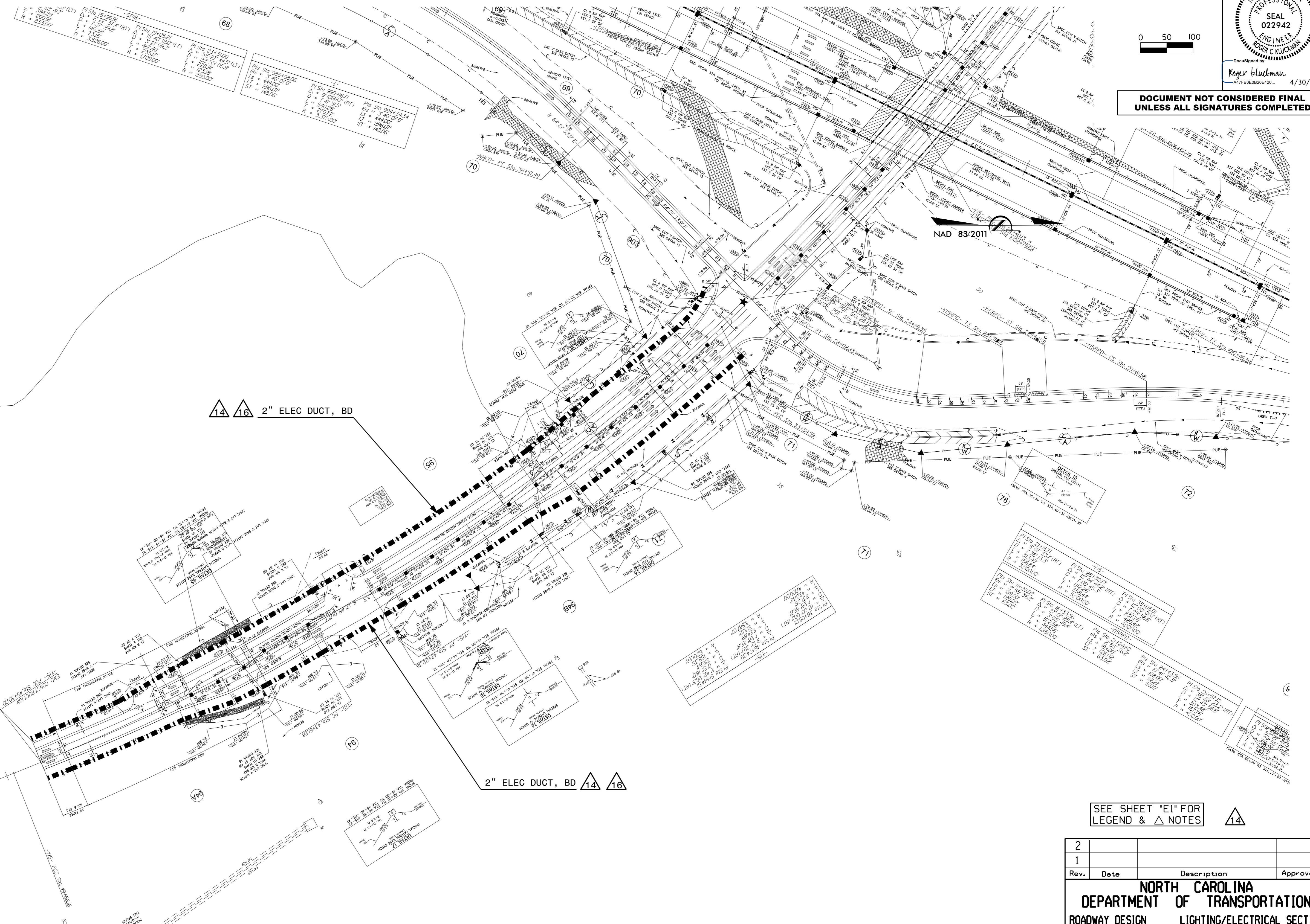
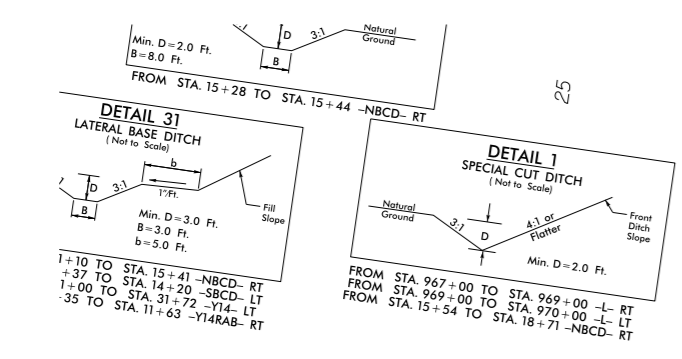


4/30/2021

**DOCUMENT NOT CONSIDERED FINAL
UNLESS ALL SIGNATURES COMPLETED**

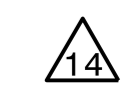
USE FOR LIGHTING CONSTRUCTION ONLY



14 16 2" ELEC DUCT, BD

2" ELEC DUCT, BD 14 16

SEE SHEET "E1" FOR
LEGEND & △ NOTES



2			
1			
Rev.	Date	Description	Approved
NORTH CAROLINA DEPARTMENT OF TRANSPORTATION ROADWAY DESIGN LIGHTING/ELECTRICAL SECTION CONDUIT LAYOUT US 421 FROM EAST OF I-95 TO PROJECT LIMITS HARNETT COUNTY			
Drawn By:	RGH	Approved By:	Dwg No.:

30-APR-2021 14:31
 R:\Lighting\Lighting Design\Design\1-59868\LE-Conduit.dsn E11.dgn
 rghal AT RD-303042