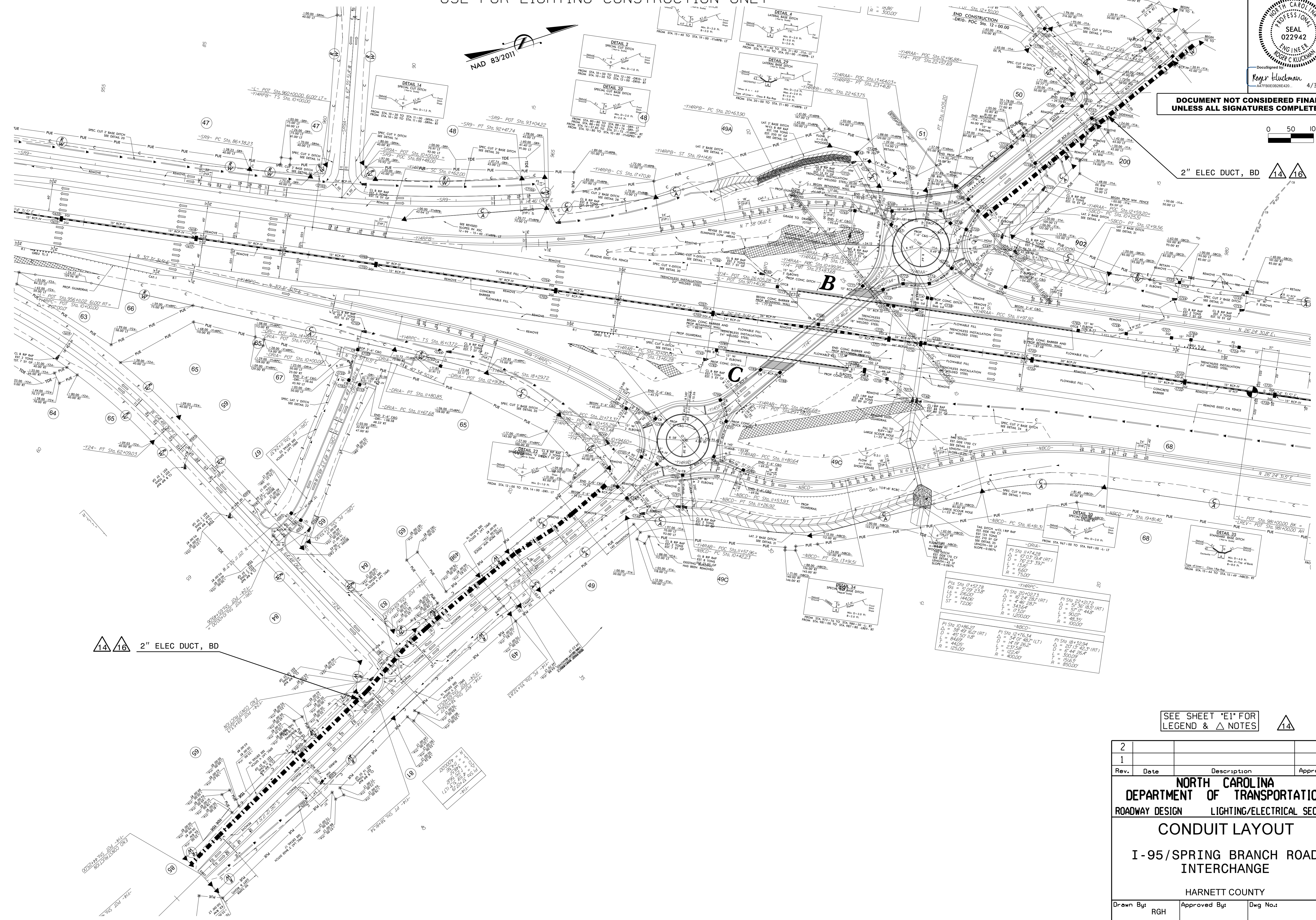


DOCUMENT NOT CONSIDERED FINAL UNLESS ALL SIGNATURES COMPLETED

0 50 100

2" ELEC DUCT, BD

USE FOR LIGHTING CONSTRUCTION ONLY



14 16 2" ELEC DUCT, BD

SEE SHEET 'E1' FOR LEGEND & Δ NOTES

Rev.	Date	Description	Approved
2			
1			

**NORTH CAROLINA DEPARTMENT OF TRANSPORTATION**  
ROADWAY DESIGN LIGHTING/ELECTRICAL SECTION

**CONDUIT LAYOUT**  
**I-95/SPRING BRANCH ROAD INTERCHANGE**  
HARNETT COUNTY

Drawn By: RGH Approved By: Dwg No.:

30-APR-2021 14:22 P:\Lighting\Lighting Design\Design\I-59868\LE-Conduit.dsn E9.dgn