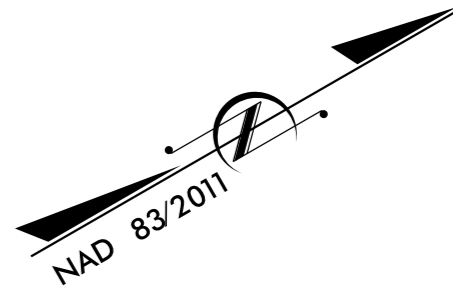




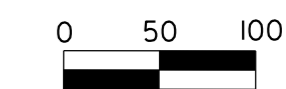
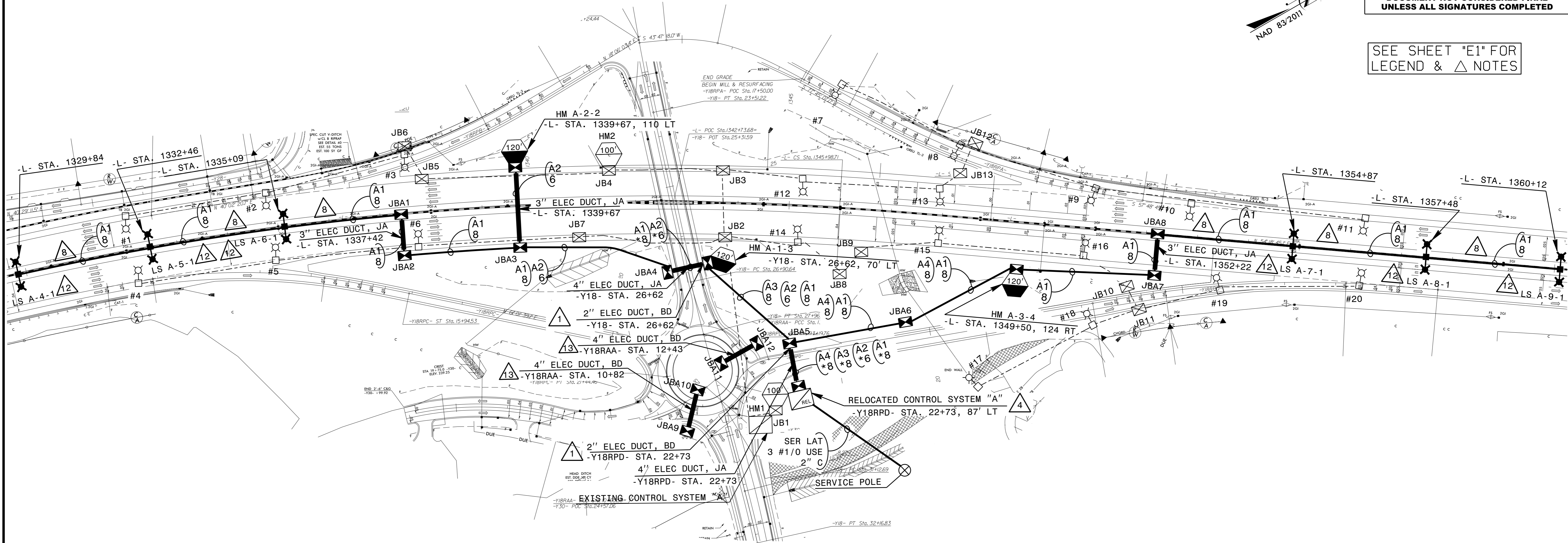
3/26/2023

DOCUMENT NOT CONSIDERED FINAL  
UNLESS ALL SIGNATURES COMPLETED

SEE SHEET "E1" FOR  
LEGEND & △ NOTES



USE FOR LIGHTING CONSTRUCTION ONLY △10



LOAD SCHEDULE I-95 / E MAIN ST INTERCHANGE						
1Ø, 3W, 240/480 VAC			CONTROL SYSTEM "A"			
EXISTING			PROPOSED			
CIRCUIT ID	SINGLE ARM 1 @ 285W LED	100' HIGH MAST W/ 4 560W MAX. LED LUMINAIRES	TWIN ARM 2 @ 285W LED	120' HIGH MAST W/ 8 560W MAX. LED LUMINAIRES	AMPS @ 480V	KW LOAD
A1	14, 15, 16, 17, 18, 19, 20		A-4, A-5, A-6, A-7, A-8, A-9		7.2	3.4
A2	4, 5, 6	HM1		A-2	9.3	4.5
A3	1, 2, 3	HM2		A-1	9.3	4.5
A4	7, 8, 9, 10, 11, 12, 13			A-3	9.3	4.5
TOTAL	20	2	6	3	35.1	16.9

△10 NOTES

1. REMOVE AND DISPOSE OF ALL LIGHT STANDARDS: SINGLE ARMS (#1 TO #20) HIGH MASTS (1 & #2)
2. REMOVE AND RE-USE EXISTING LUMINAIRES INCLUDING NODES.
3. RELOCATE EXISTING CONTROL SYSTEM "A"
4. ABANDON UNDERGROUND SYSTEMS: (LEGEND -----).
5. REMOVE AND DISPOSE OF ALL EXISTING JUNCTION BOXES

2			
1			
Rev.	Date	Description	Approved
NORTH CAROLINA DEPARTMENT OF TRANSPORTATION ROADWAY DESIGN LIGHTING/ELECTRICAL SECTION			
LIGHTING LAYOUT I-95 / EAST MAIN STREET INTERCHANGE (EXIT-79) JOHNSTON COUNTY			
Drawn By:	SKS	Approved By:	RGH
Dwg No.:			