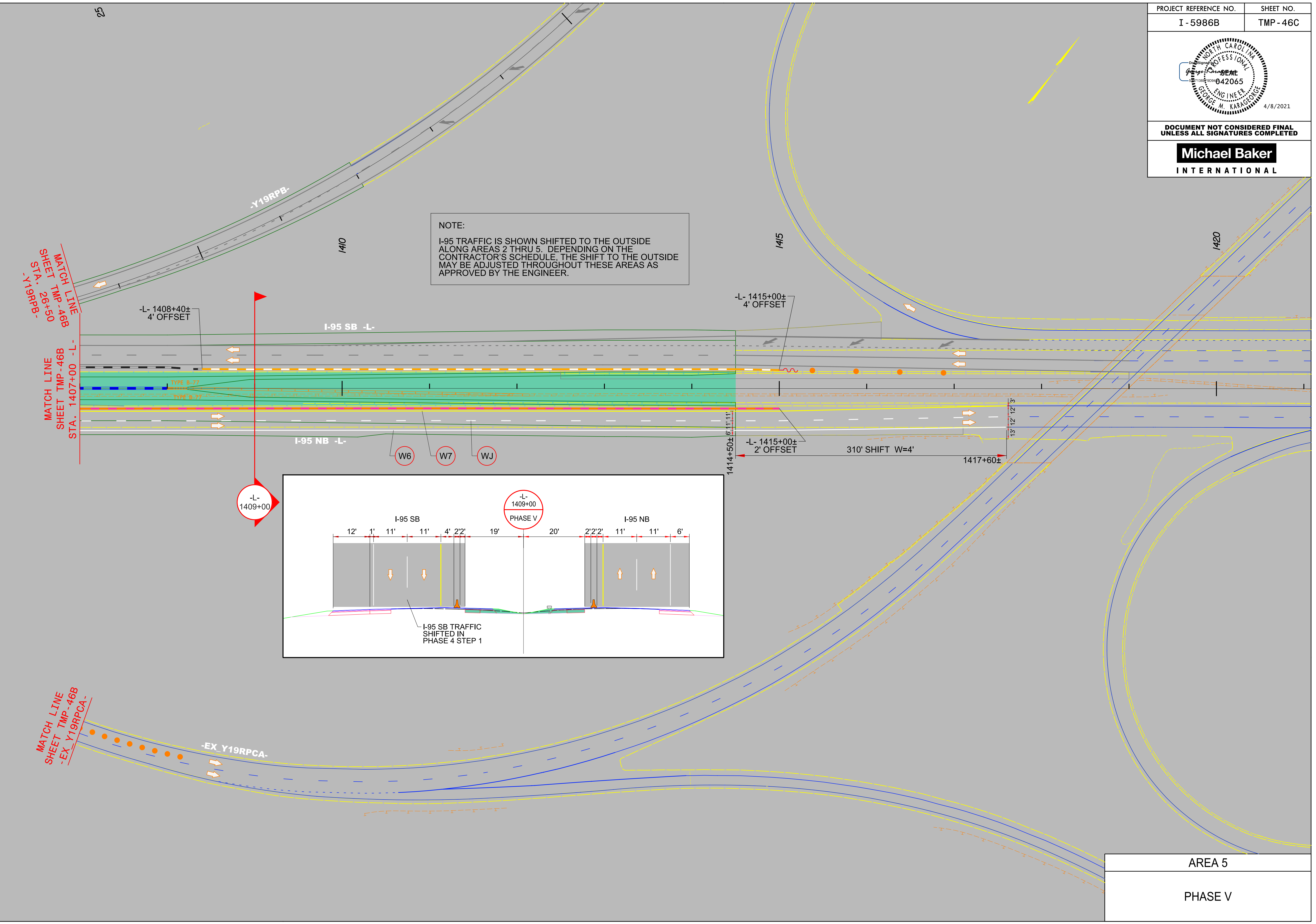
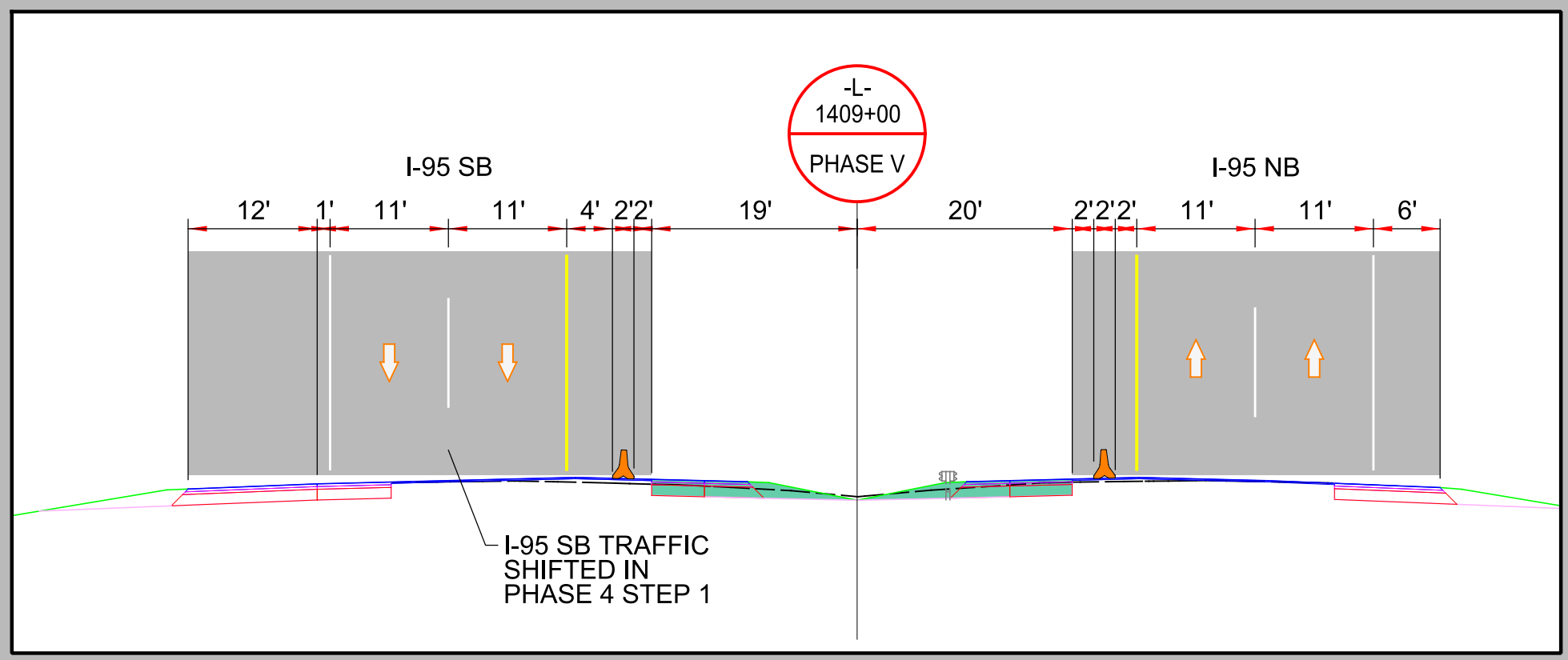


DOCUMENT NOT CONSIDERED FINAL
UNLESS ALL SIGNATURES COMPLETED

Michael Baker
INTERNATIONAL



NOTE:
I-95 TRAFFIC IS SHOWN SHIFTED TO THE OUTSIDE ALONG AREAS 2 THRU 5. DEPENDING ON THE CONTRACTOR'S SCHEDULE, THE SHIFT TO THE OUTSIDE MAY BE ADJUSTED THROUGHOUT THESE AREAS AS APPROVED BY THE ENGINEER.



4/2/2021
 R:\Traffic\Transportation Management\PLAN SHEETS\I-5986B TMP 46C AREA 05 PHASE 05 STEP 01.dgn
 Caroline.Owings

AREA 5
PHASE V