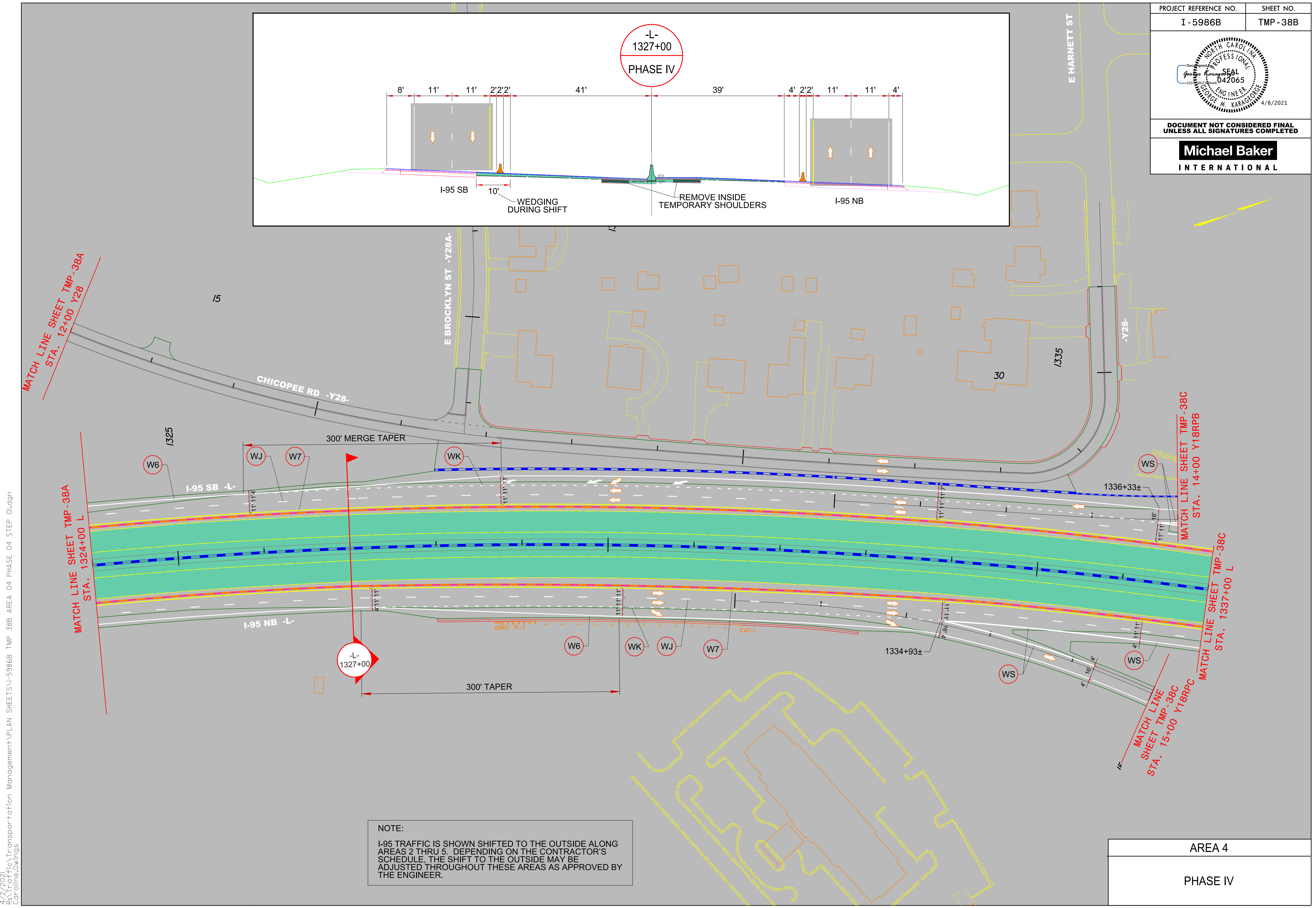
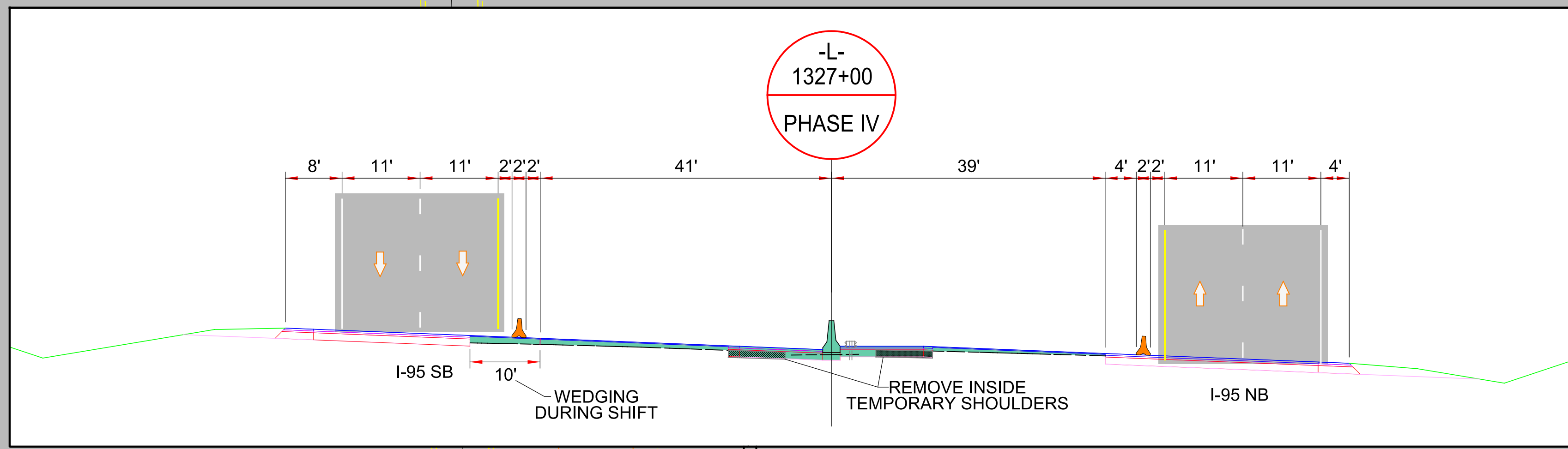


DOCUMENT NOT CONSIDERED FINAL UNLESS ALL SIGNATURES COMPLETED

Michael Baker
INTERNATIONAL



NOTE:
I-95 TRAFFIC IS SHOWN SHIFTED TO THE OUTSIDE ALONG AREAS 2 THRU 5. DEPENDING ON THE CONTRACTOR'S SCHEDULE, THE SHIFT TO THE OUTSIDE MAY BE ADJUSTED THROUGHOUT THESE AREAS AS APPROVED BY THE ENGINEER.

AREA 4
PHASE IV

4/2/2021
R:\Traffic\Transportation Management\PLAN SHEETS\I-5986B TMP 38B AREA 04 PHASE 04 STEP 01.dgn
Caroline Owings