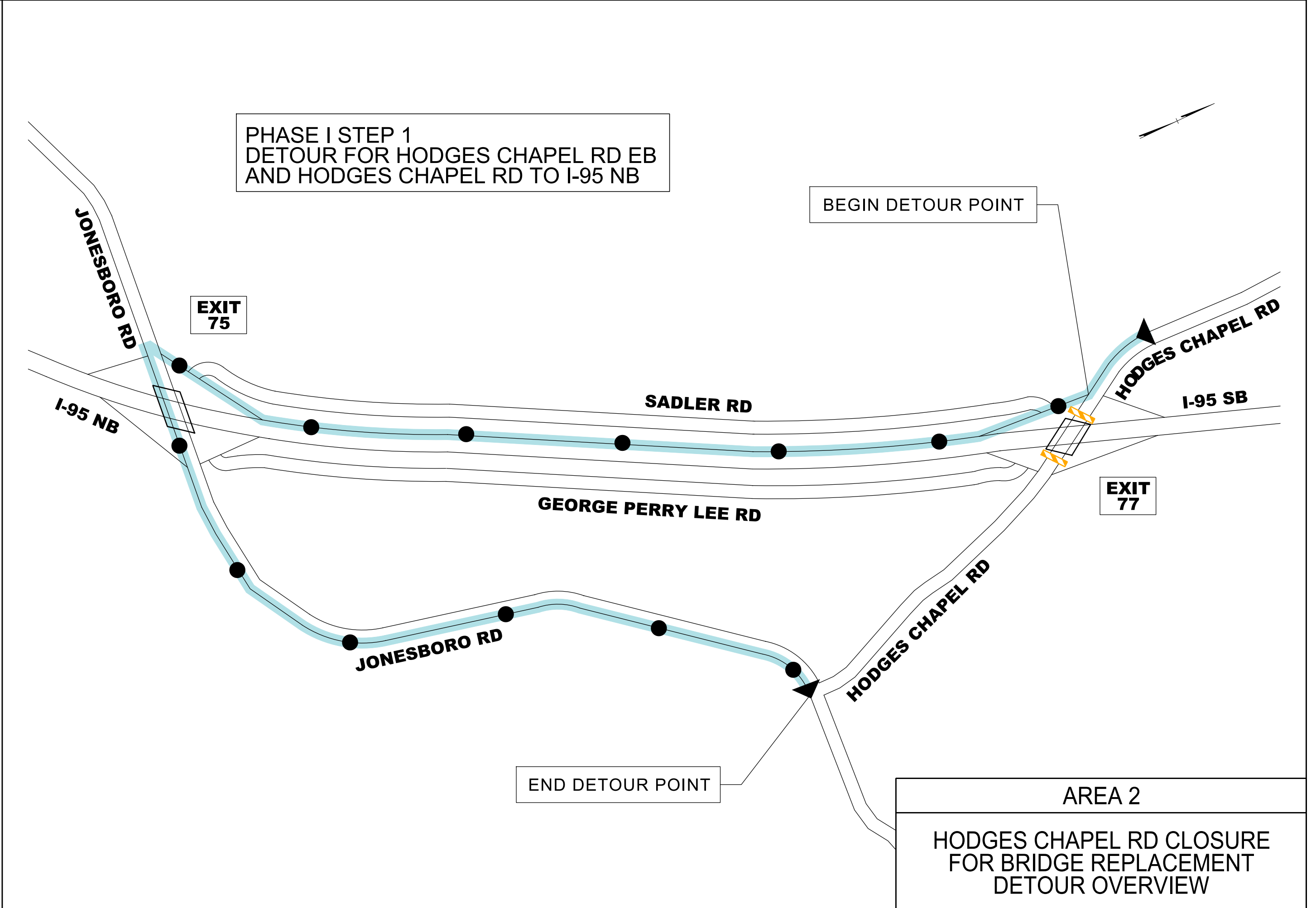
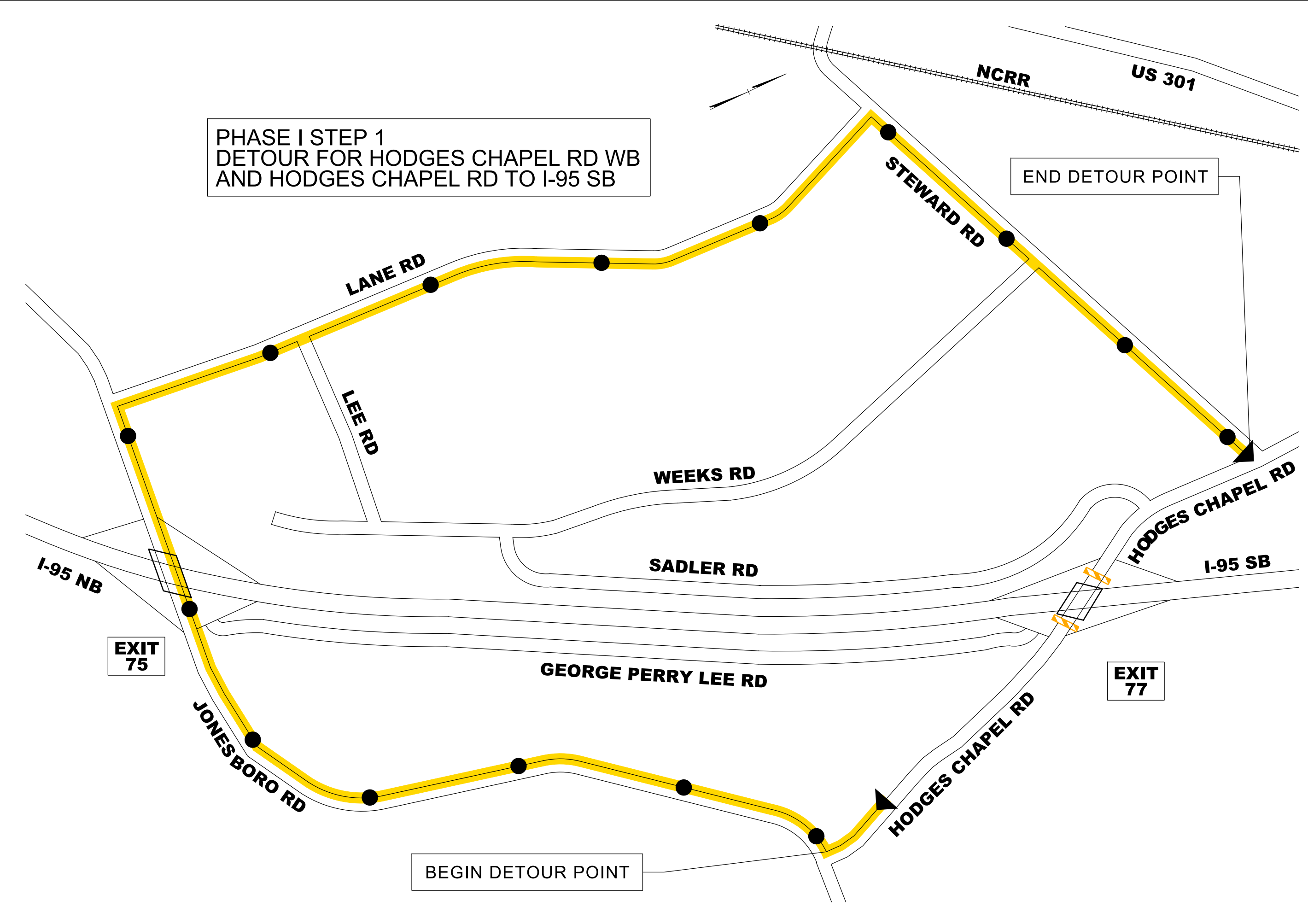
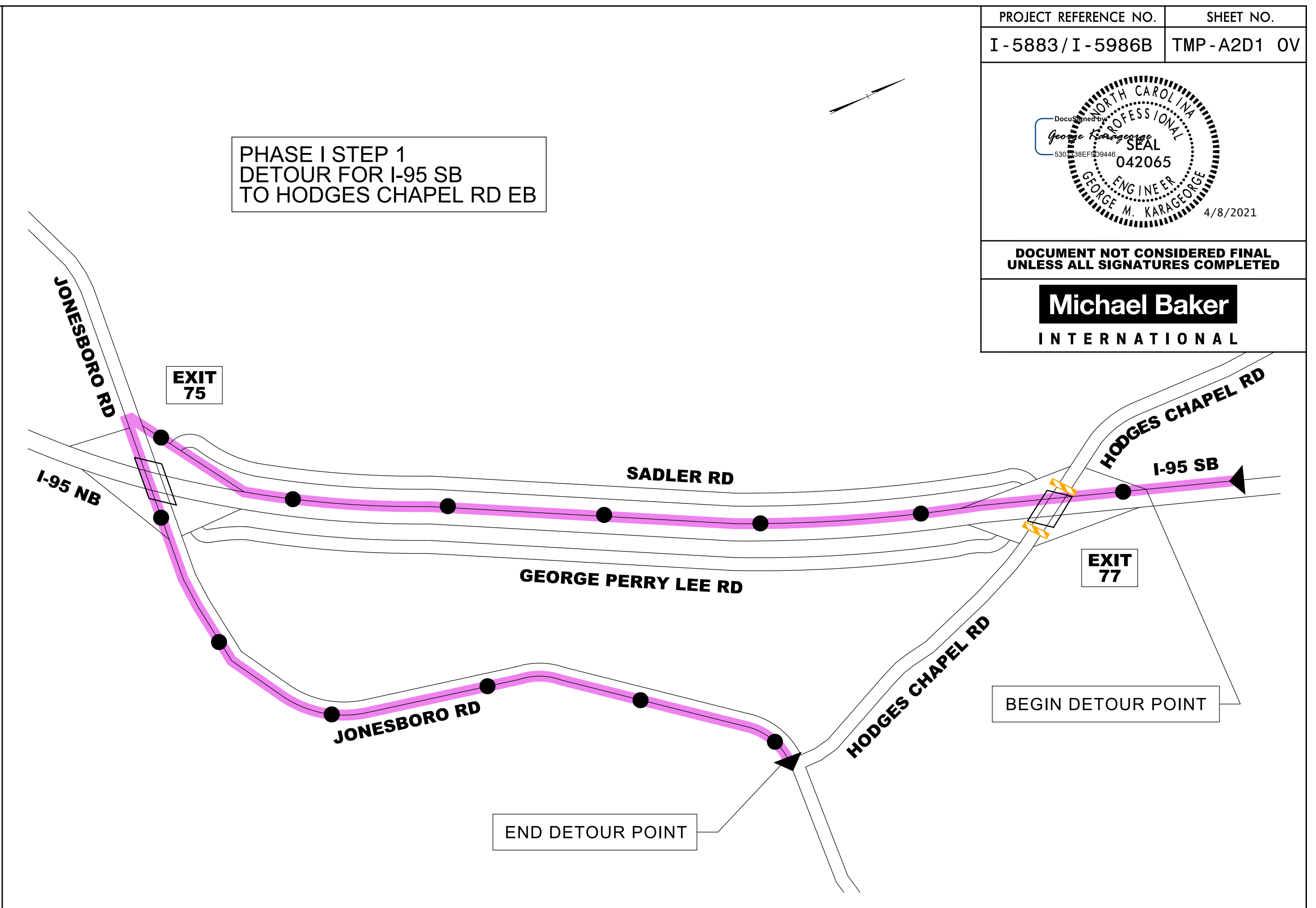
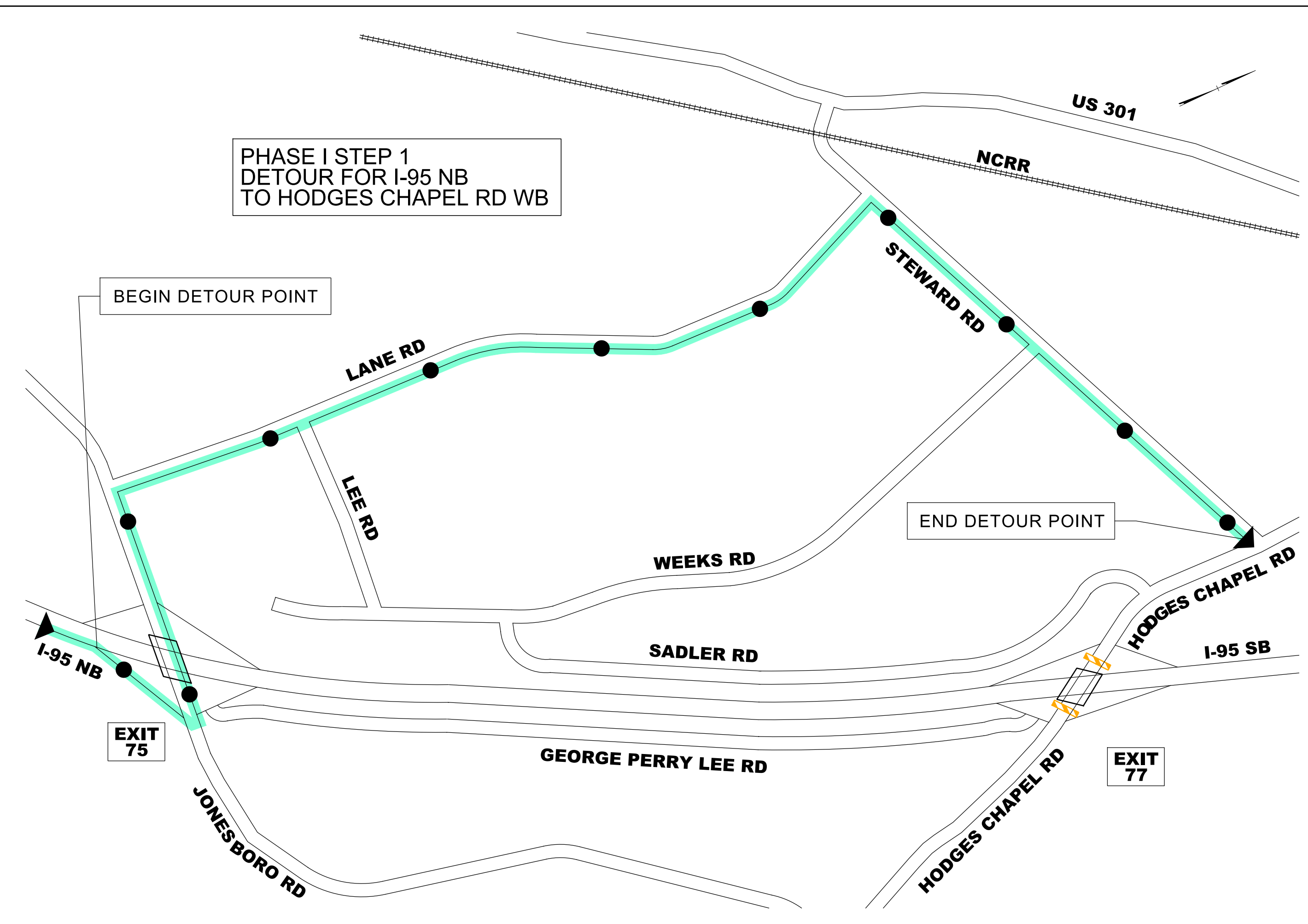


DOCUMENT NOT CONSIDERED FINAL UNLESS ALL SIGNATURES COMPLETED

Michael Baker
INTERNATIONAL



AREA 2
HODGES CHAPEL RD CLOSURE
FOR BRIDGE REPLACEMENT
DETOUR OVERVIEW

4/1/2021
 R:\Traf\Transportation Management\PLAN SHEETS\I-5986B TMP A2D1 OV AREA 2 PHASE 01 OVERVIEW.dgn
 Caroline Owings