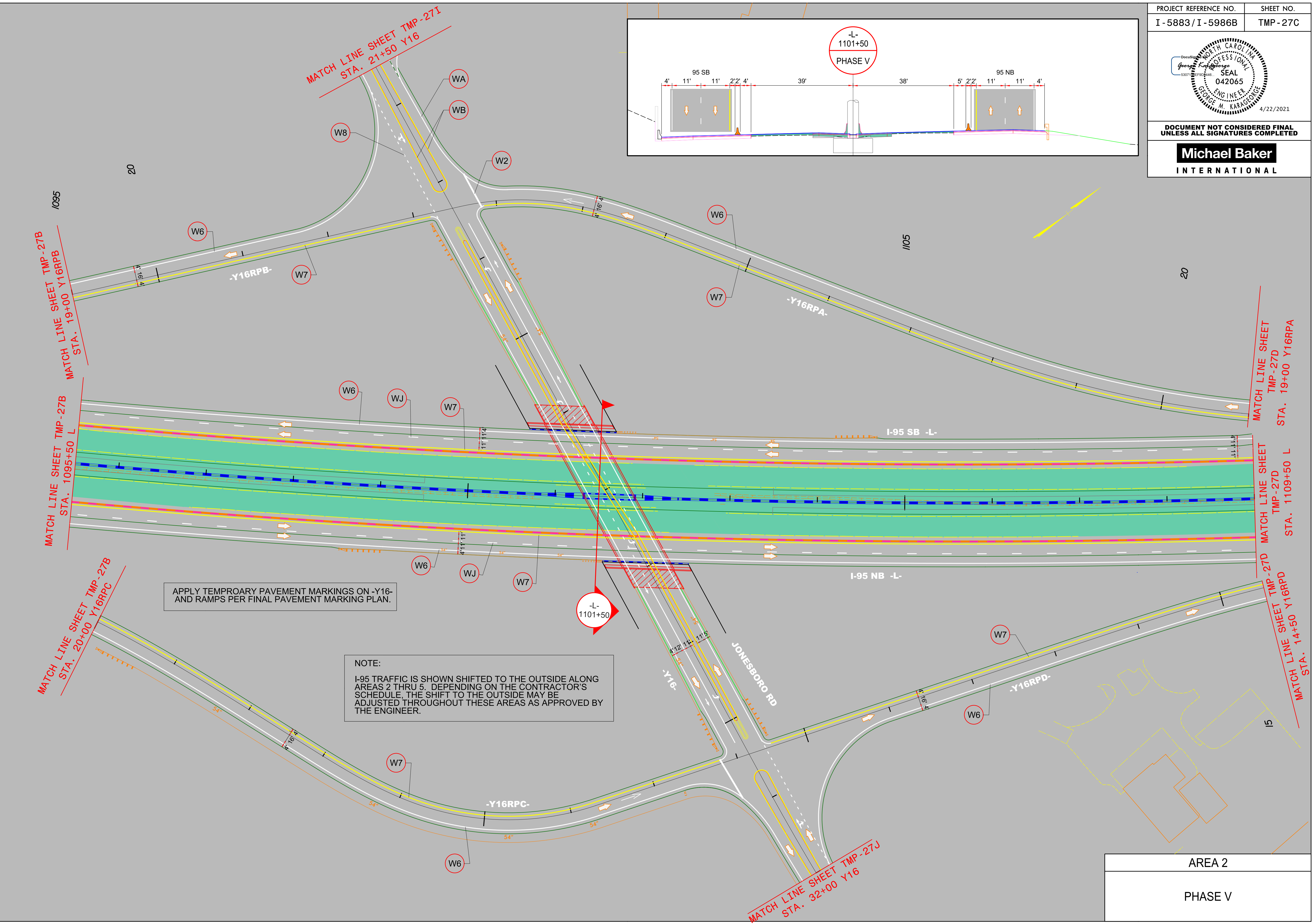
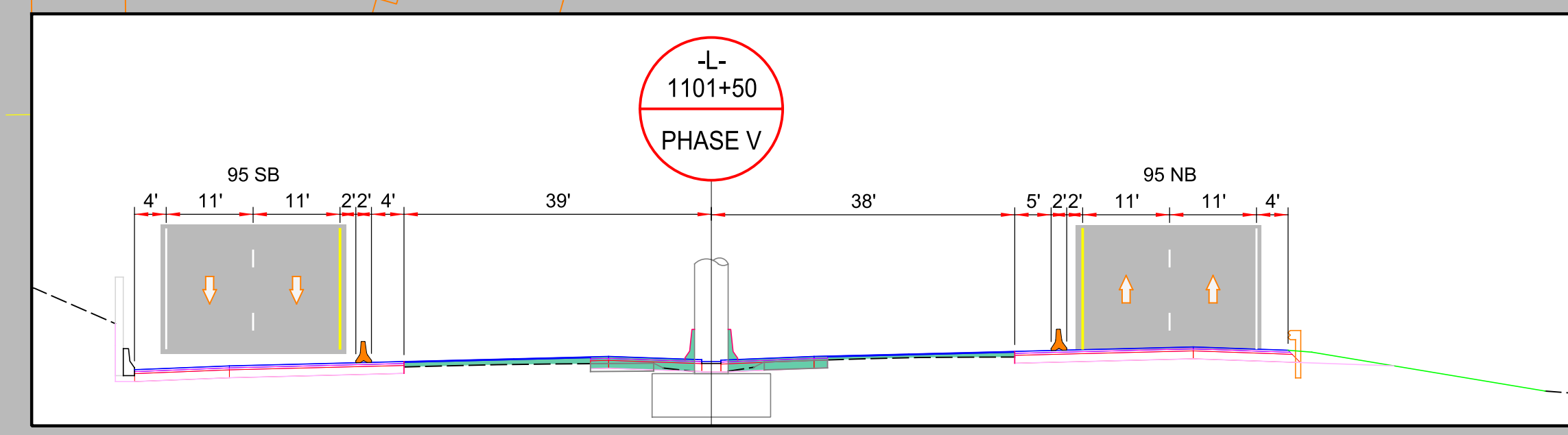


DOCUMENT NOT CONSIDERED FINAL
UNLESS ALL SIGNATURES COMPLETED

Michael Baker
INTERNATIONAL



APPLY TEMPORARY PAVEMENT MARKINGS ON -Y16- AND RAMPS PER FINAL PAVEMENT MARKING PLAN.

NOTE:
I-95 TRAFFIC IS SHOWN SHIFTED TO THE OUTSIDE ALONG AREAS 2 THRU 5. DEPENDING ON THE CONTRACTOR'S SCHEDULE, THE SHIFT TO THE OUTSIDE MAY BE ADJUSTED THROUGHOUT THESE AREAS AS APPROVED BY THE ENGINEER.

AREA 2
PHASE V

4/21/2021
R:\Traffic\Transportation Management\PLAN SHEETS\I-5986B TMP 27C AREA 02 PHASE 05 STEP 01.dgn
Caroline.Owings