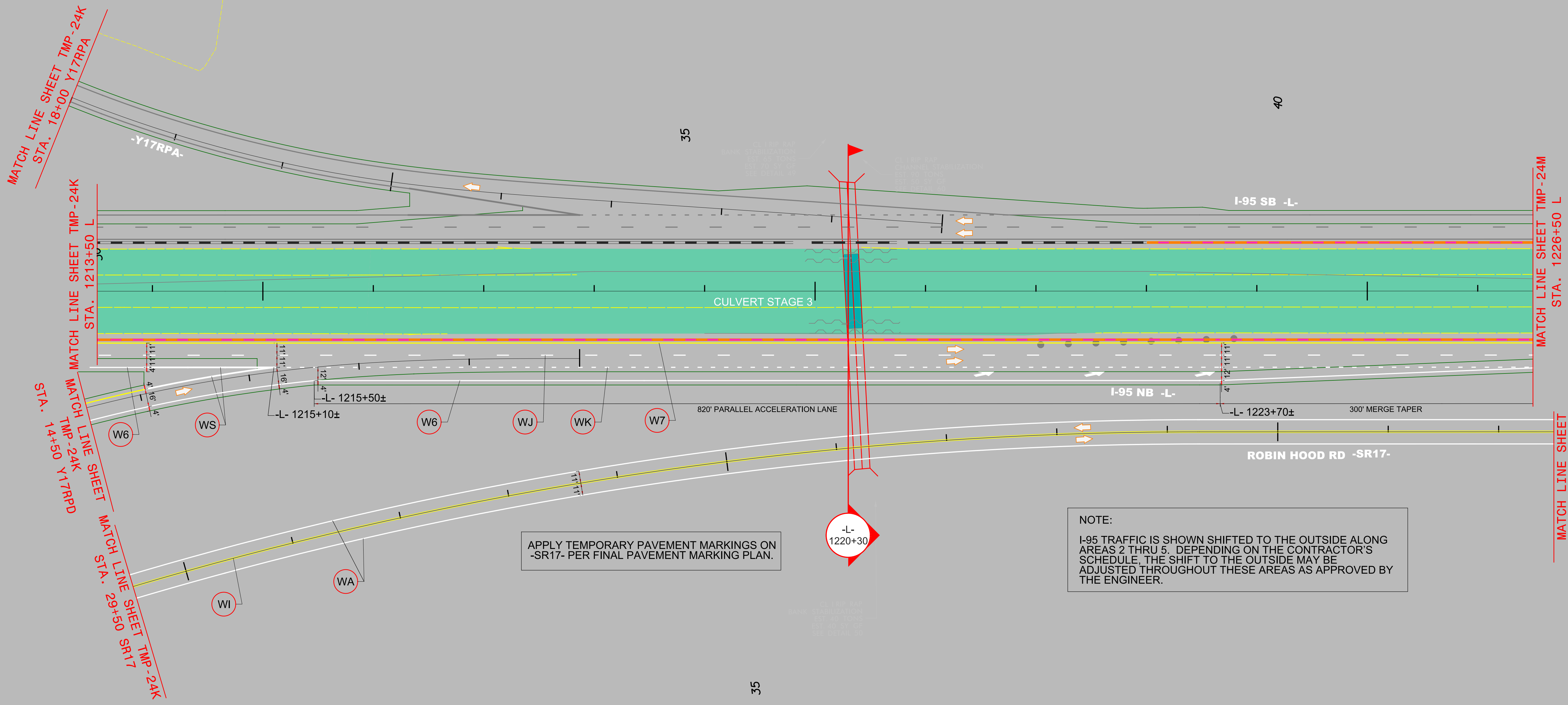
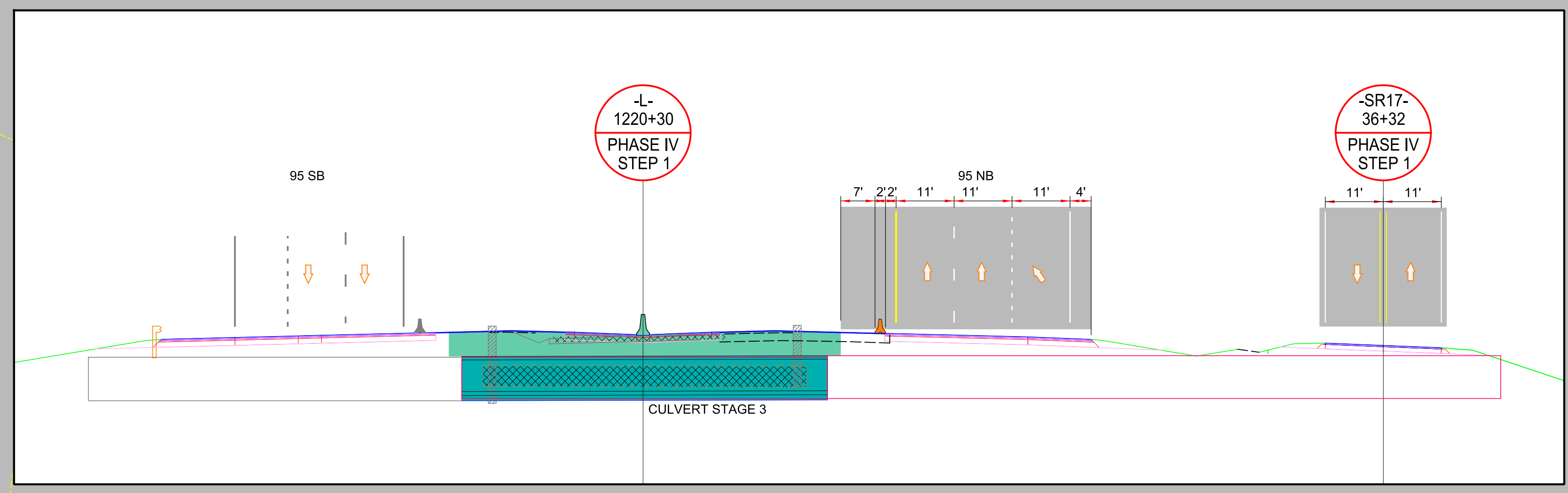


DOCUMENT NOT CONSIDERED FINAL UNLESS ALL SIGNATURES COMPLETED

Michael Baker
INTERNATIONAL



APPLY TEMPORARY PAVEMENT MARKINGS ON -SR17- PER FINAL PAVEMENT MARKING PLAN.

NOTE:
I-95 TRAFFIC IS SHOWN SHIFTED TO THE OUTSIDE ALONG AREAS 2 THRU 5. DEPENDING ON THE CONTRACTOR'S SCHEDULE, THE SHIFT TO THE OUTSIDE MAY BE ADJUSTED THROUGHOUT THESE AREAS AS APPROVED BY THE ENGINEER.

4/21/2021
R:\Traffic\Transportation Management\PLAN SHEETS\I-5986B TMP 24L AREA 02 PHASE 04 STEP 01.dgn
Caroline.Owings

AREA 2
PHASE IV STEP 1