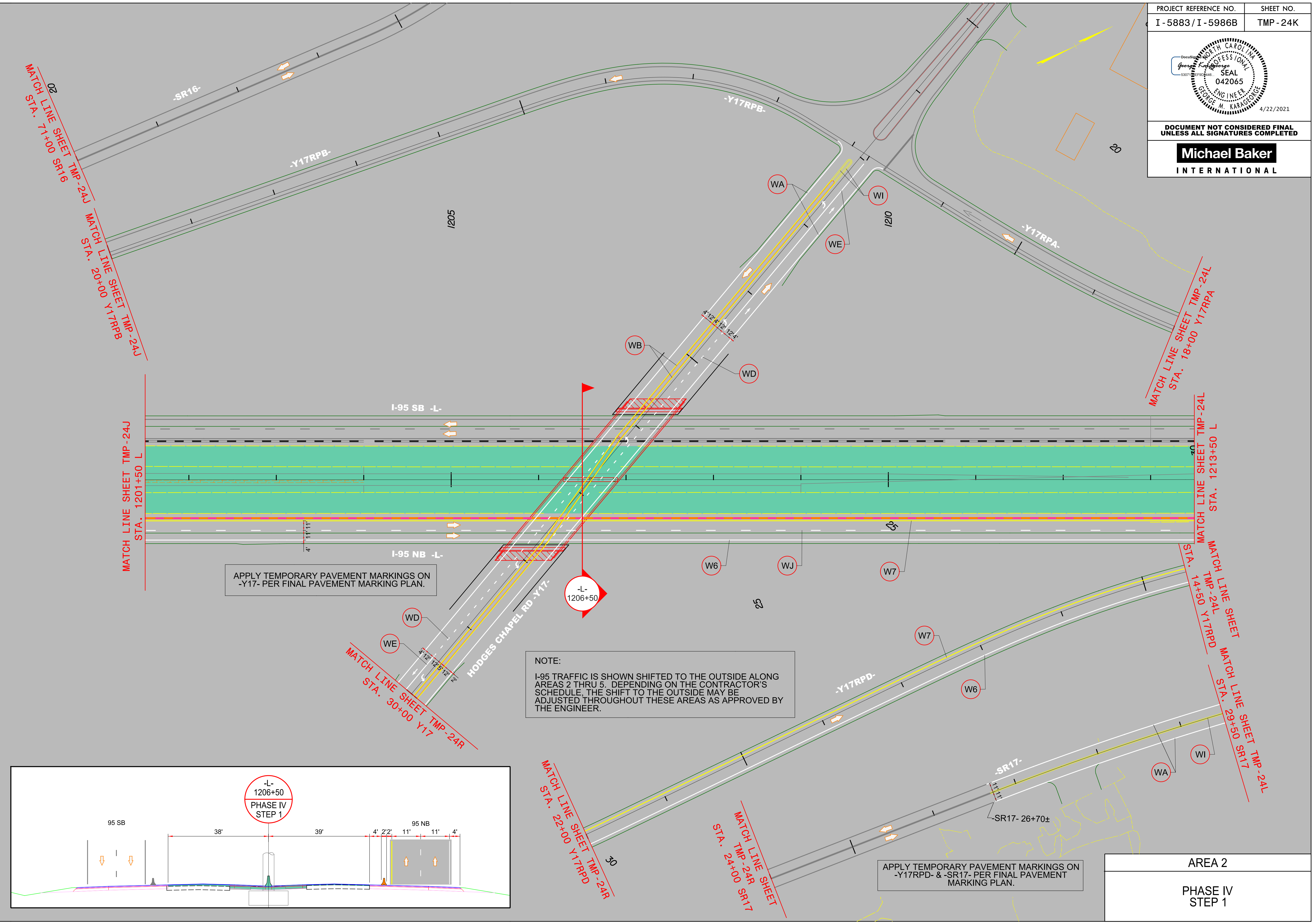


DOCUMENT NOT CONSIDERED FINAL
UNLESS ALL SIGNATURES COMPLETED

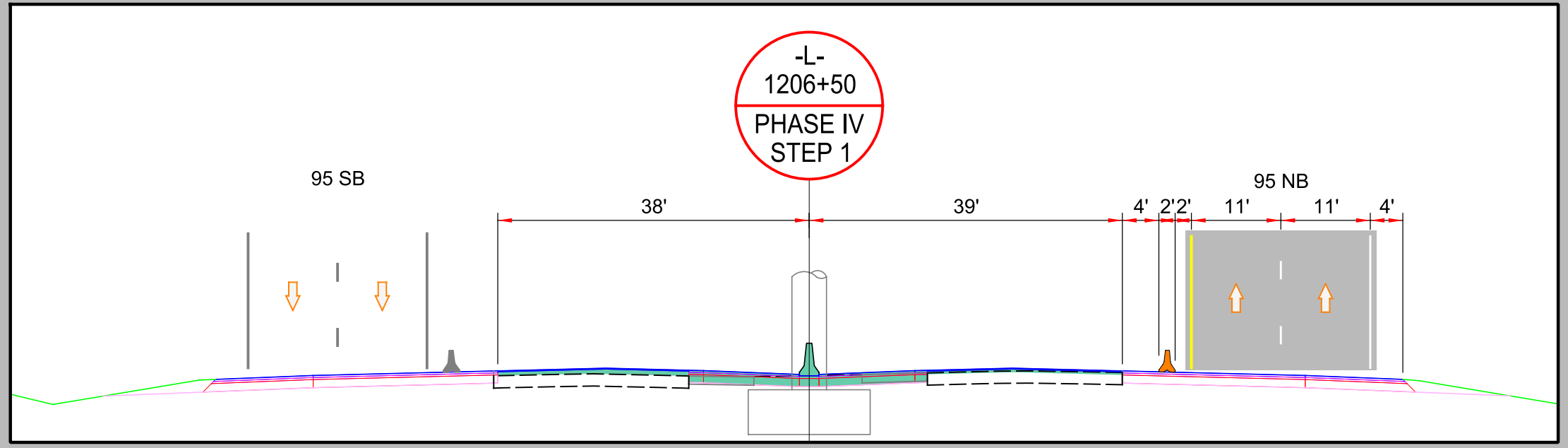
Michael Baker
INTERNATIONAL



APPLY TEMPORARY PAVEMENT MARKINGS ON
-Y17- PER FINAL PAVEMENT MARKING PLAN.

NOTE:
I-95 TRAFFIC IS SHOWN SHIFTED TO THE OUTSIDE ALONG
AREAS 2 THRU 5. DEPENDING ON THE CONTRACTOR'S
SCHEDULE, THE SHIFT TO THE OUTSIDE MAY BE
ADJUSTED THROUGHOUT THESE AREAS AS APPROVED BY
THE ENGINEER.

APPLY TEMPORARY PAVEMENT MARKINGS ON
-Y17RPD- & -SR17- PER FINAL PAVEMENT
MARKING PLAN.



AREA 2
PHASE IV
STEP 1

4/22/2021
R:\Traffic\Transportation Management\PLAN SHEETS\I-5986B TMP 24K AREA 02 PHASE 04 STEP 01.dgn
Caroline.Owings