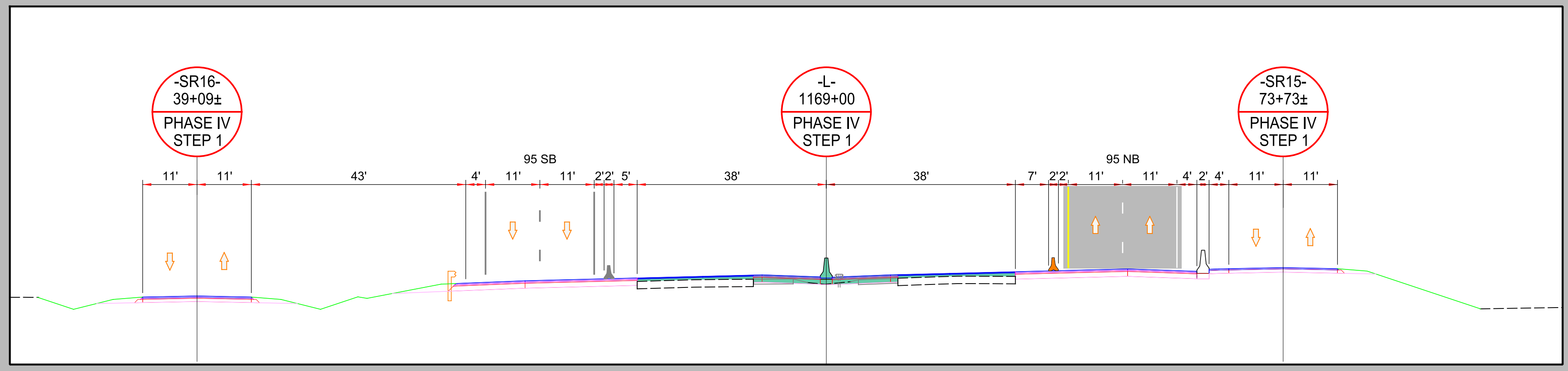


DOCUMENT NOT CONSIDERED FINAL
UNLESS ALL SIGNATURES COMPLETED

Michael Baker
INTERNATIONAL

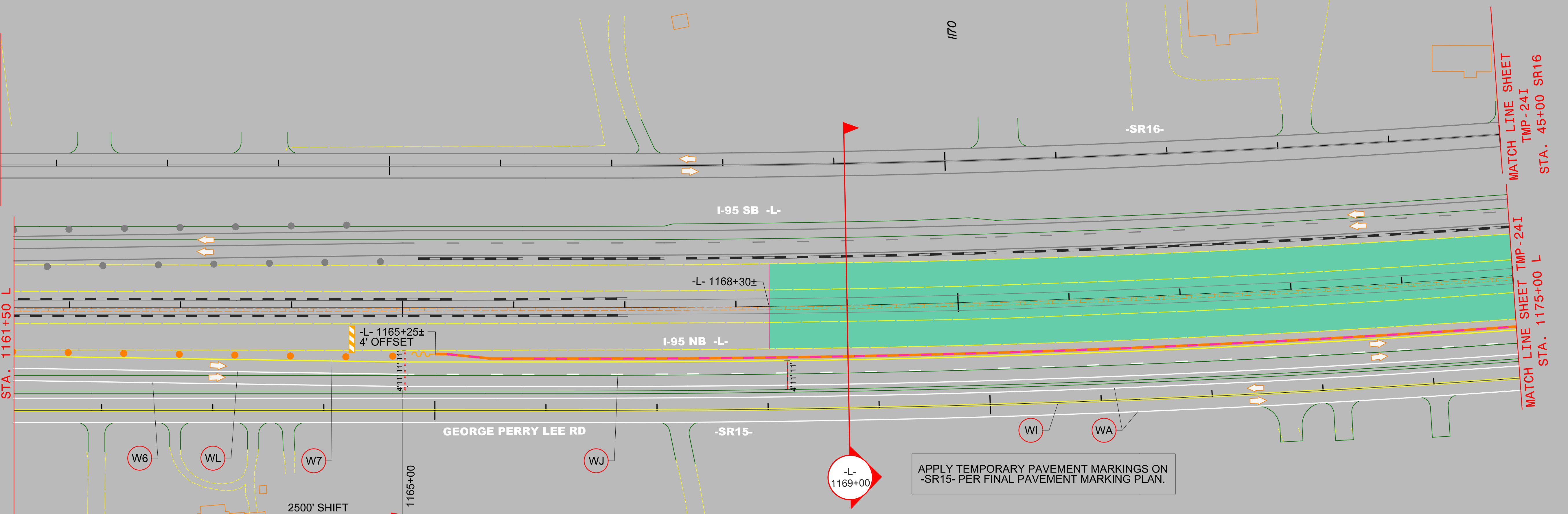


MATCH LINE SHEET TMP-24G
STA. 31+50 SR16

MATCH LINE SHEET TMP-24G
STA. 1161+50 L

MATCH LINE SHEET
TMP-24I
STA. 45+00 SR16

MATCH LINE SHEET TMP-24I
STA. 1175+00 L



APPLY TEMPORARY PAVEMENT MARKINGS ON
-SR15- PER FINAL PAVEMENT MARKING PLAN.

NOTE:
I-95 TRAFFIC IS SHOWN SHIFTED TO THE OUTSIDE ALONG
AREAS 2 THRU 5. DEPENDING ON THE CONTRACTOR'S
SCHEDULE, THE SHIFT TO THE OUTSIDE MAY BE
ADJUSTED THROUGHOUT THESE AREAS AS APPROVED BY
THE ENGINEER.

4/21/2021
R:\Traffic\Transportation Management\PLAN SHEETS\I-5986B TMP 24H AREA 02 PHASE 04 STEP 01.dgn
Caroline Owings

AREA 2
PHASE IV
STEP 1