

PROJECT REFERENCE NO. <b>I - 5878</b>	SHEET NO. <b>TMP - A1D4</b>
<p><b>DOCUMENT NOT CONSIDERED FINAL UNLESS ALL SIGNATURES COMPLETED</b></p>	
<p><b>Michael Baker INTERNATIONAL</b></p>	

**SIGN LEGEND**

**1**

M4-5 24"x12"	<b>TO</b>	<b>TO</b>	M4-5 24"x12"
M1-4 24"x30"			M1-5 24"x24"
M6-1 21"x15"			M6-1 21"x15"

**2**

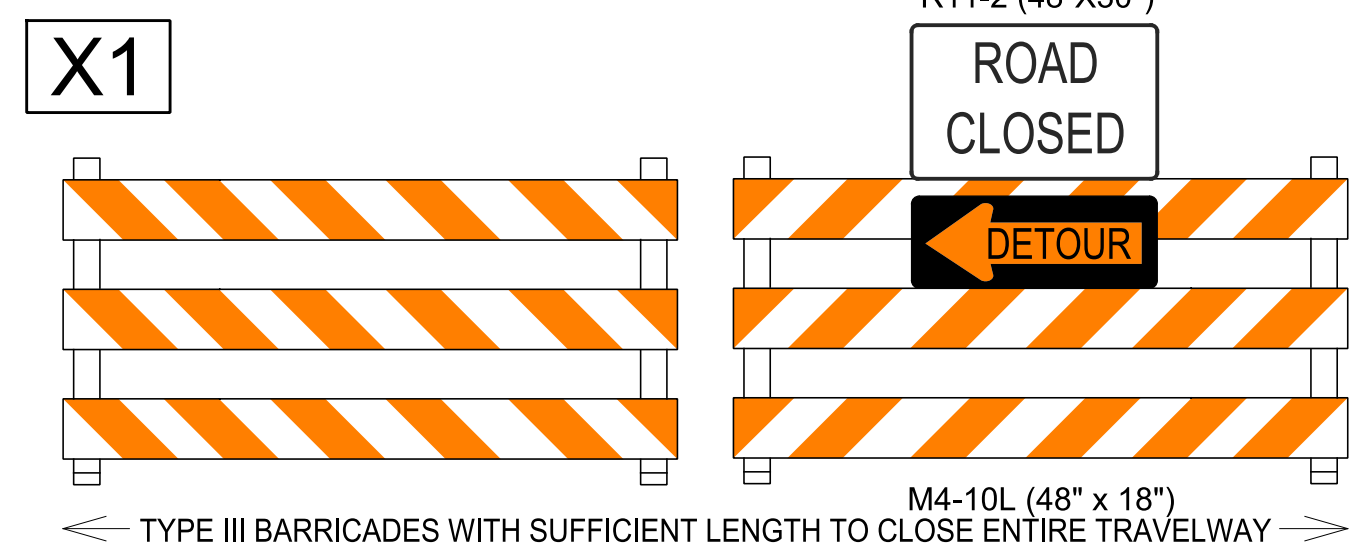
M4-5 24"x12"	<b>TO</b>	<b>TO</b>	M4-5 24"x12"
M1-4 24"x30"			M1-5 24"x24"
M6-3 21"x15"			M6-3 21"x15"

**3**

M4-5 24"x12"	<b>TO</b>	<b>TO</b>	M4-5 24"x12"
M1-4 24"x30"			M1-5 24"x24"
M5-1R 21"x15"			M5-1R 21"x15"

REFER TO TMP-6 FOR  
REMAINDER OF DEVICES



**CMS MESSAGES  
PRIOR TO ROAD CLOSURE**

**CMS 1**

CHANGEABLE MESSAGE SIGN	
RAMP CLOSING	STARTS MM/DD

**CMS MESSAGES  
DURING ROAD CLOSURE**

**CMS 2**

CHANGEABLE MESSAGE SIGN	
EXIT 73 CLOSED	USE NEXT EXIT

**CMS 3**

CHANGEABLE MESSAGE SIGN	
TO US 421/ NC 55	USE THIS EXIT

**AREA 1**

RAMP A CLOSURE  
TO CONSTRUCT RAMP TIE-IN  
DETOUR

4/1/2021  
 R:\Trafico\Transportation Management\PLAN SHEETS\I-5986B TMP AID4 AREA 01PHASE 01.dgn  
 Caroline.Owings

