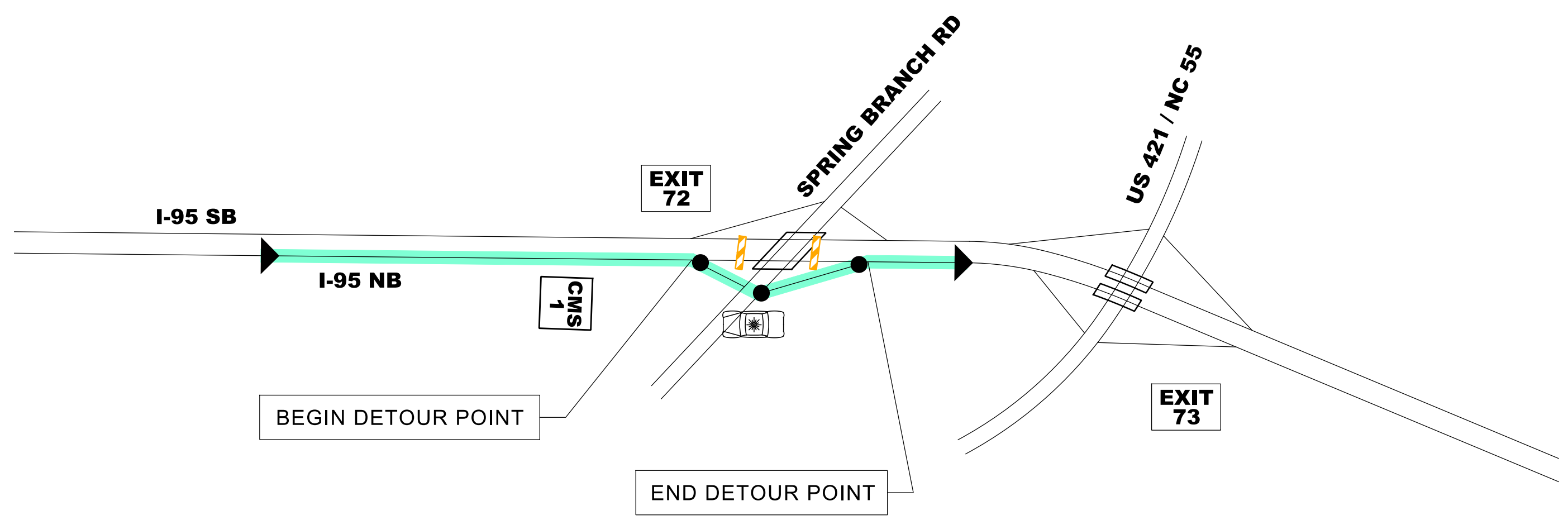


DOCUMENT NOT CONSIDERED FINAL UNLESS ALL SIGNATURES COMPLETED

Michael Baker
INTERNATIONAL

DETOUR FOR:
I-95 NB ROAD CLOSURE
UNDER SPRING BRANCH RD

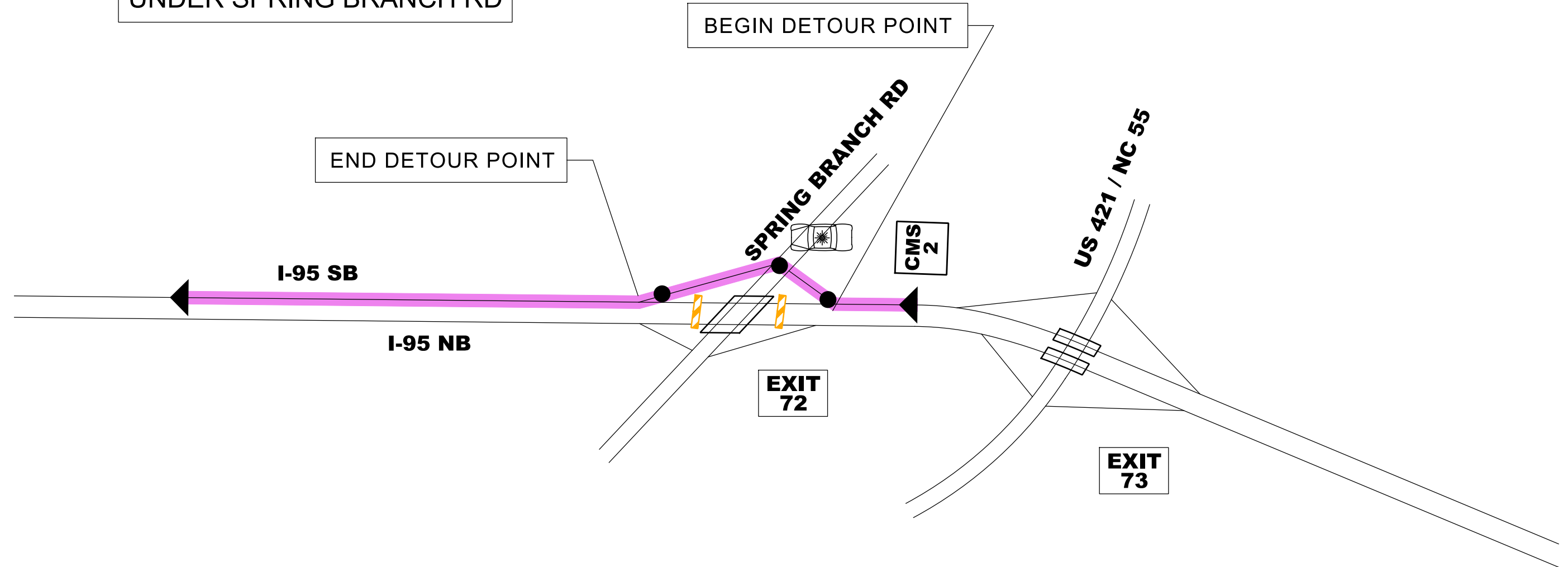


APPLY I-95 "ROAD CLOSURE TYPICAL"
TMP-2B

CMS MESSAGES
PRIOR TO ROAD CLOSURE

CMS 1	CHANGEABLE MESSAGE SIGN	
	I-95 NB CLOSING MM/DD	11 PM TO 5 AM
CMS 2	CHANGEABLE MESSAGE SIGN	
	I-95 SB CLOSING MM/DD	11 PM TO 5 AM

DETOUR FOR:
I-95 SB ROAD CLOSURE
UNDER SPRING BRANCH RD



AREA 1
I-95 ROAD CLOSURE
FOR SPRING BRANCH RD
BRIDGE GIRDER WORK
DETOUR OVERVIEW