

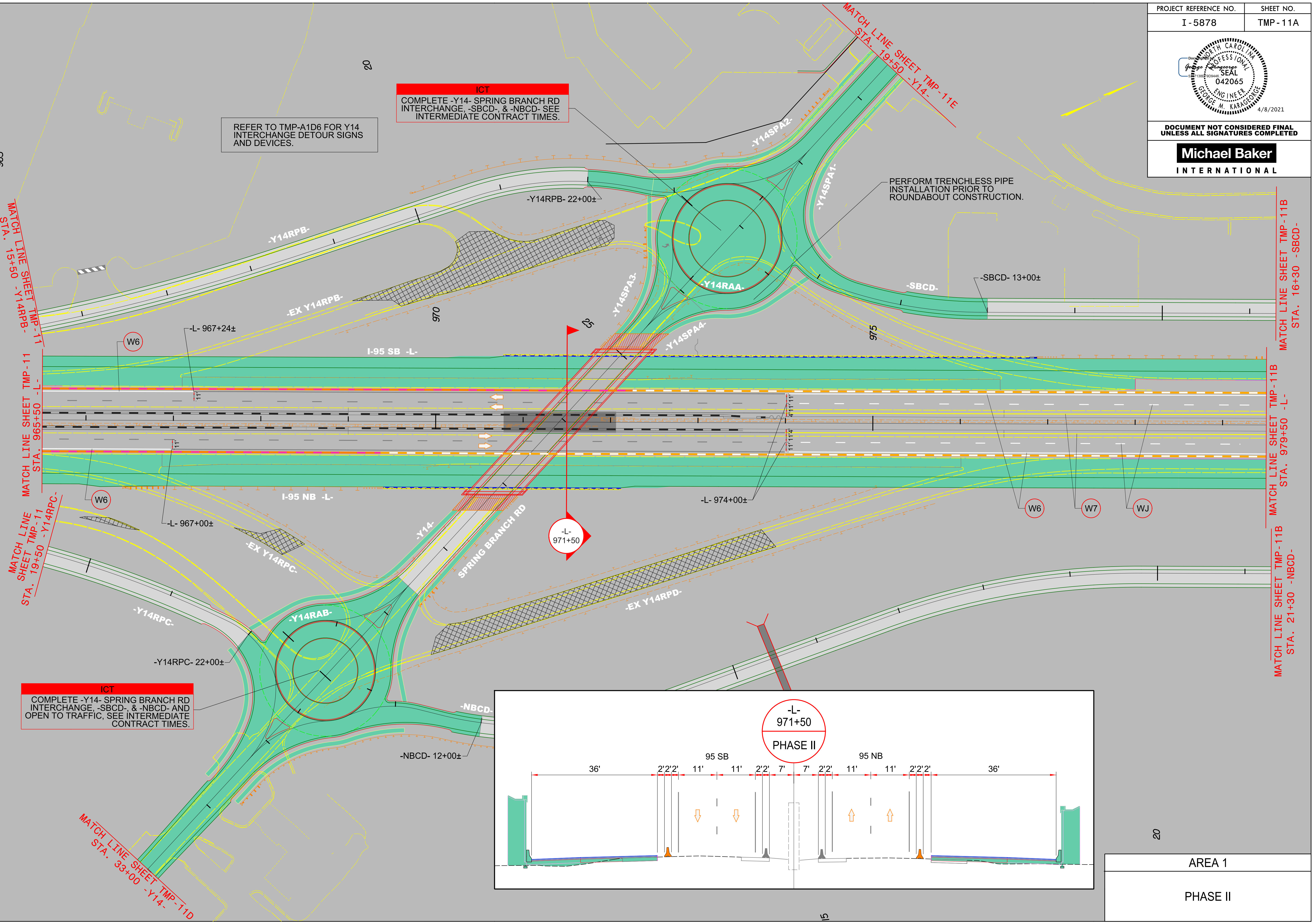
DOCUMENT NOT CONSIDERED FINAL  
UNLESS ALL SIGNATURES COMPLETED

**Michael Baker**  
INTERNATIONAL

REFER TO TMP-A1D6 FOR Y14 INTERCHANGE DETOUR SIGNS AND DEVICES.

**ICT**  
COMPLETE -Y14- SPRING BRANCH RD INTERCHANGE, -SBCD-, & -NBCD- SEE INTERMEDIATE CONTRACT TIMES.

PERFORM TRENCHLESS PIPE INSTALLATION PRIOR TO ROUNDABOUT CONSTRUCTION.



MATCH LINE SHEET TMP-111  
STA. 15+50 -Y14RPB-

MATCH LINE SHEET TMP-111  
STA. 965+50 -L-

MATCH LINE SHEET TMP-111  
STA. 19+50 -Y14RPC-

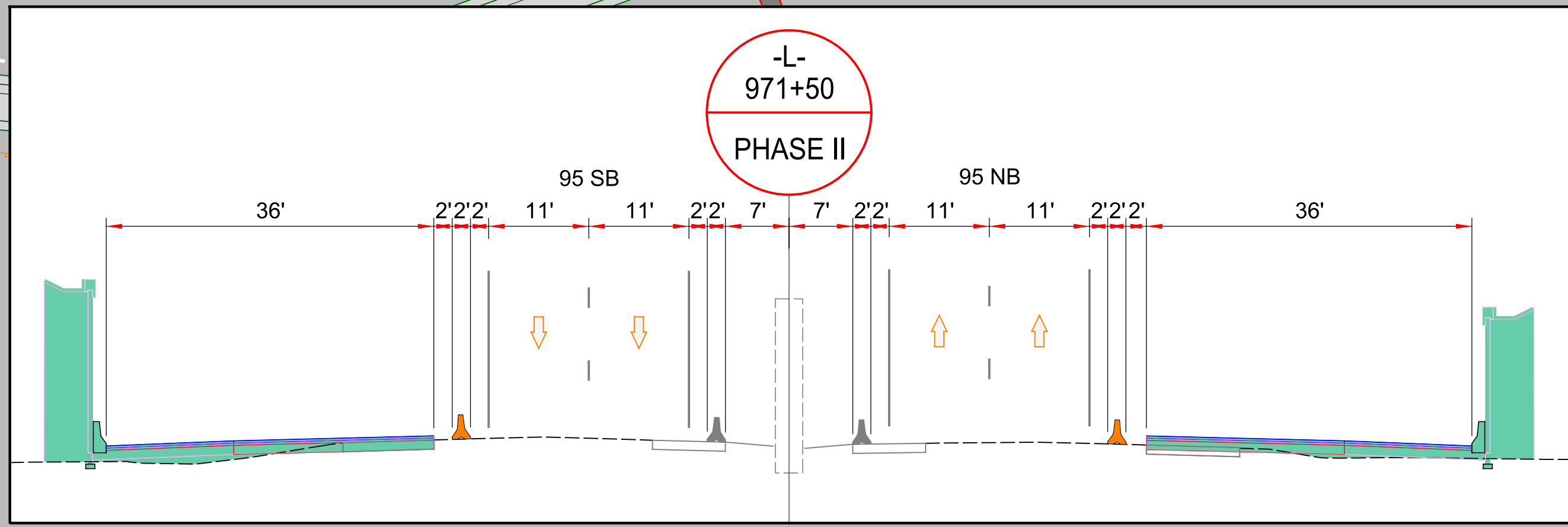
MATCH LINE SHEET TMP-11D  
STA. 33+00 -Y14-

MATCH LINE SHEET TMP-11B  
STA. 16+30 -SBCD-

MATCH LINE SHEET TMP-11B  
STA. 979+50 -L-

MATCH LINE SHEET TMP-11B  
STA. 21+30 -NBCD-

**ICT**  
COMPLETE -Y14- SPRING BRANCH RD INTERCHANGE, -SBCD-, & -NBCD- AND OPEN TO TRAFFIC, SEE INTERMEDIATE CONTRACT TIMES.



4/1/2021  
R:\Tirg\file\Transportation Management\PLAN SHEETS\I-5878\B TMP IIA AREA 01PHASE 02 STEP 01.dgn  
Caroline.Owings

AREA 1  
PHASE II