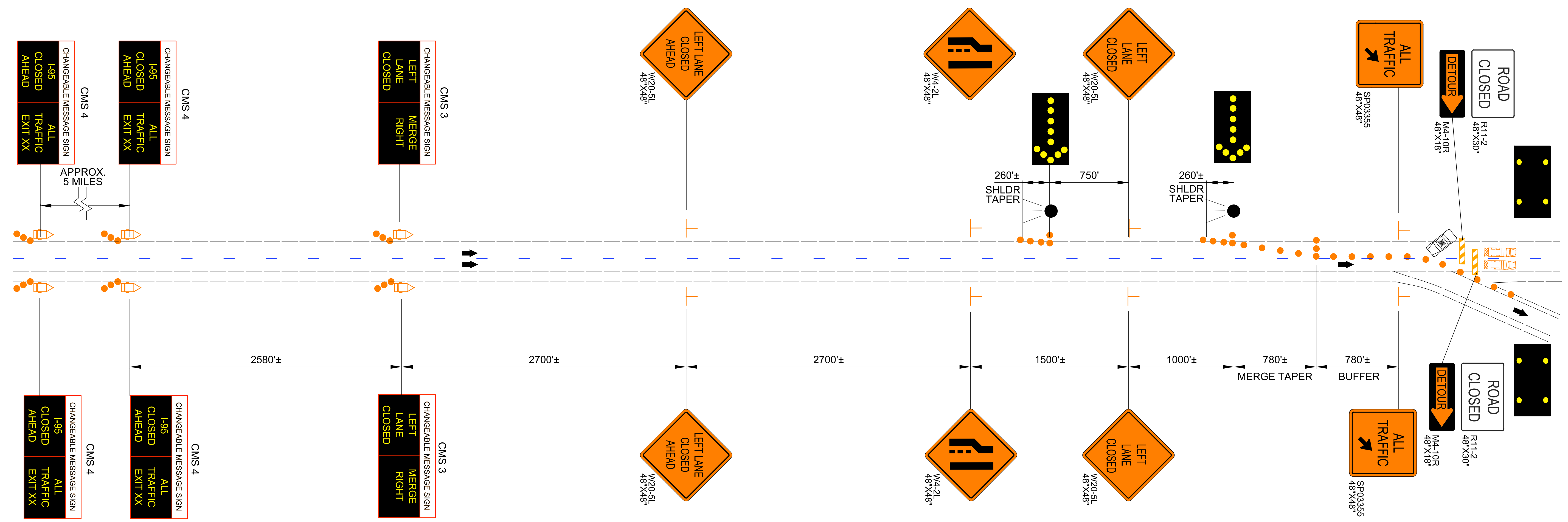


DOCUMENT NOT CONSIDERED FINAL
UNLESS ALL SIGNATURES COMPLETED

Michael Baker
INTERNATIONAL

LEFT SIDE CMS'S MAY BE RELOCATED OR OMITTED IF SPACE IS NOT AVAILABLE (AS DIRECTED BY THE ENGINEER).



FOR CMS MESSAGES SEE SHEETS TMP-A1D2OV AND TMP-A1D7OV

- NOTES:
1. TYPICAL DRAWING TO BE USED AS SPECIFIED IN THE PLAN FOR BRIDGE GIRDER REMOVAL AND ERECTION.
 2. USE LAW ENFORCEMENT TO DIRECT TRAFFIC AT RAMP TERMINALS.
 3. REFER TO RSD 1101.02 SHEET 4 FOR APPLICABLE NOTES.

I-95 ROAD CLOSURE
ALL TRAFFIC EXIT
TYPICAL DRAWING