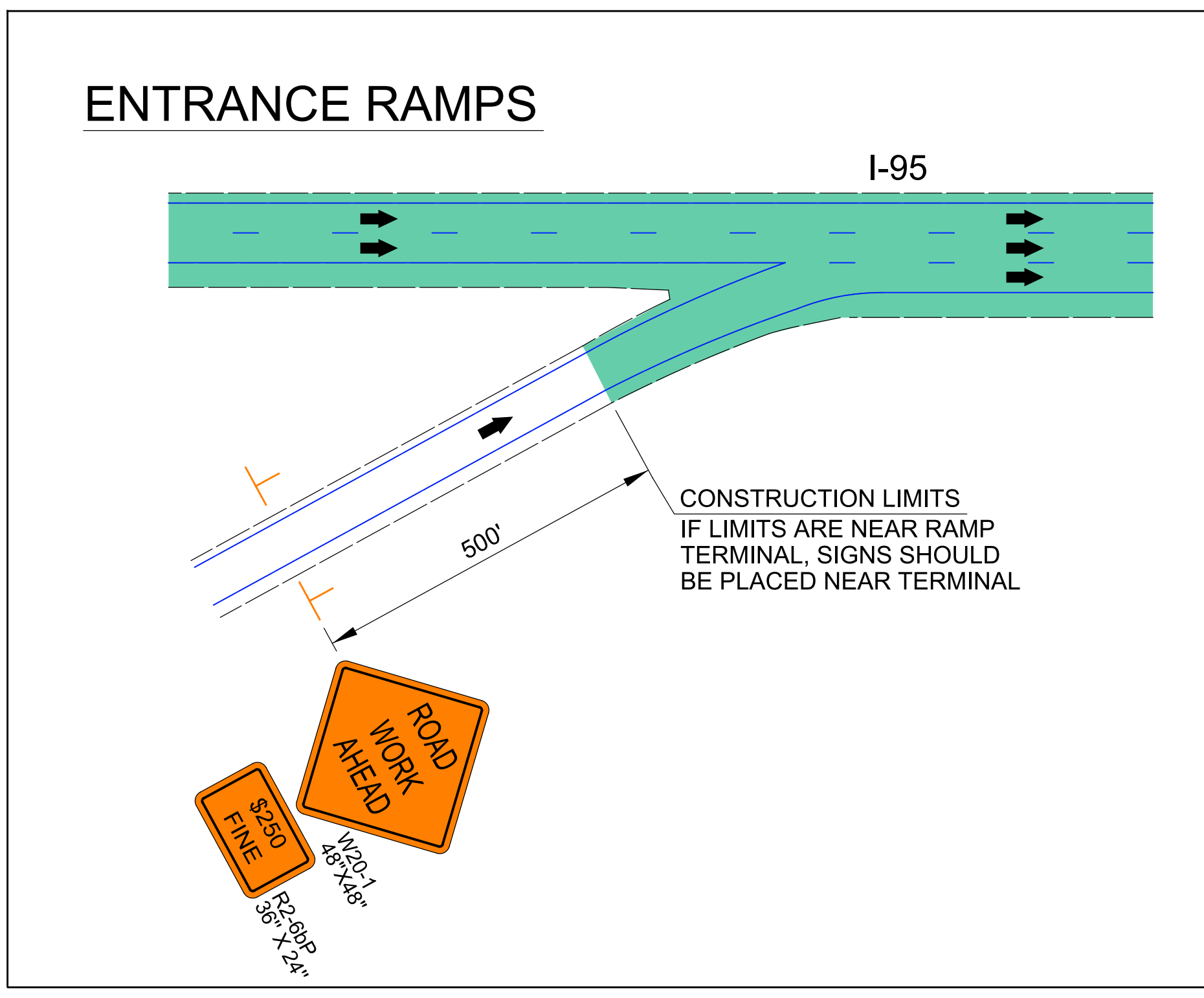
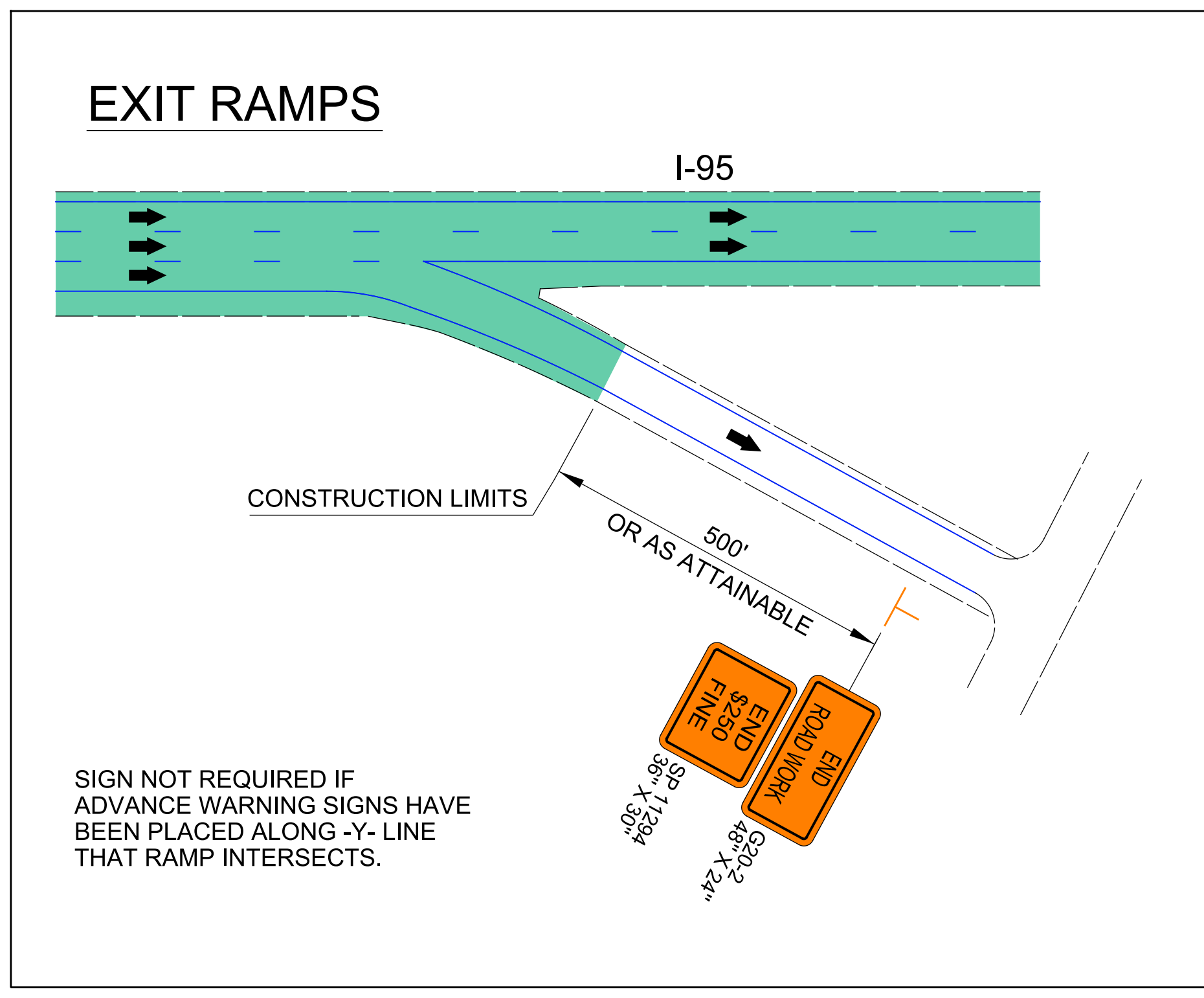
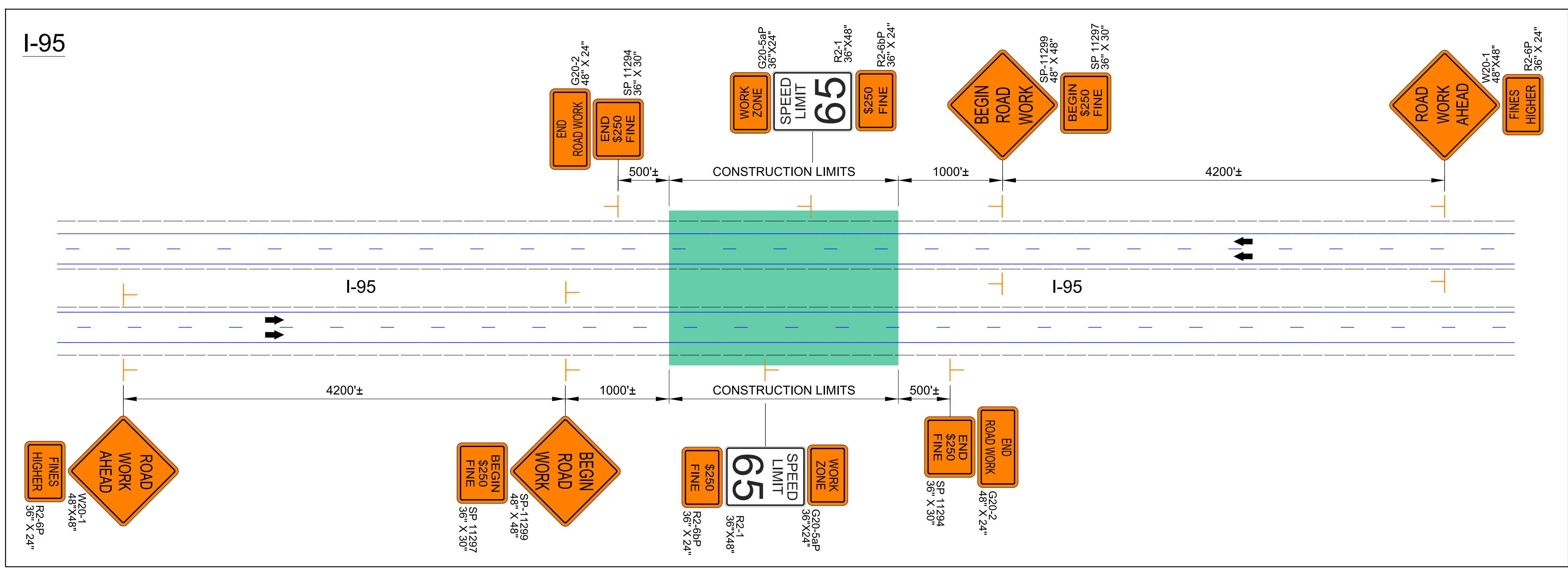


DOCUMENT NOT CONSIDERED FINAL
UNLESS ALL SIGNATURES COMPLETED

Michael Baker
INTERNATIONAL



NOTES:

- DO NOT INSTALL ADVANCE WARNING SIGNS MORE THAN 3 DAYS PRIOR TO BEGINNING OF WORK UNLESS COVERED.
- ALL SIGN SPACING DIMENSIONS ARE APPROXIMATE, FIELD ADJUST AS NECESSARY OR AS DIRECTED.
- ERECT SIGNS PER RSD 1110.01. PAYMENT FOR WOOD POSTS, 3 LBS STEEL U-CHANNEL AND SQUARE STEEL TUBING POSTS WITH SIGNS WILL BE MADE ACCORDING TO STANDARD SPECIFICATIONS FOR WORK ZONE SIGNS.
- WHEN NECESSARY, USE SPLICING IN ACCORDANCE WITH RSD 1110.01.
- DO NOT BACK BRACE SIGN SUPPORTS.
- COORDINATE ADVANCE WARNING SIGNS WITH CONTRACTOR OF PROJECT I-5986A/I-5877 CURRENTLY UNDER CONSTRUCTION.

I-95 "WORK ZONE"
ADVANCE WARNING SIGNS
TYPICAL

4/2/2021
 R:\Traffic\Transportation Management\PLAN SHEETS\I-5986B TMP 02 WZ ADVANCE WARNING SIGNS.dgn
 Caroline.Owings