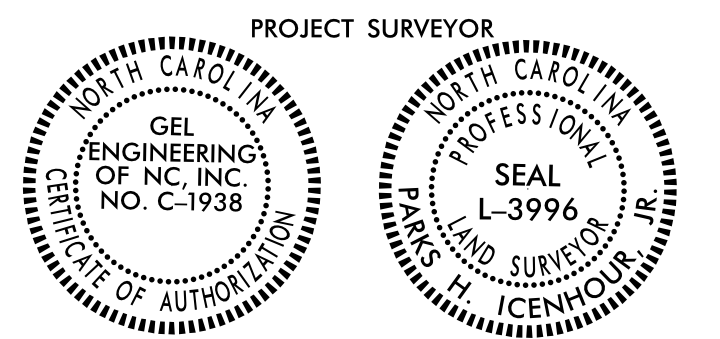


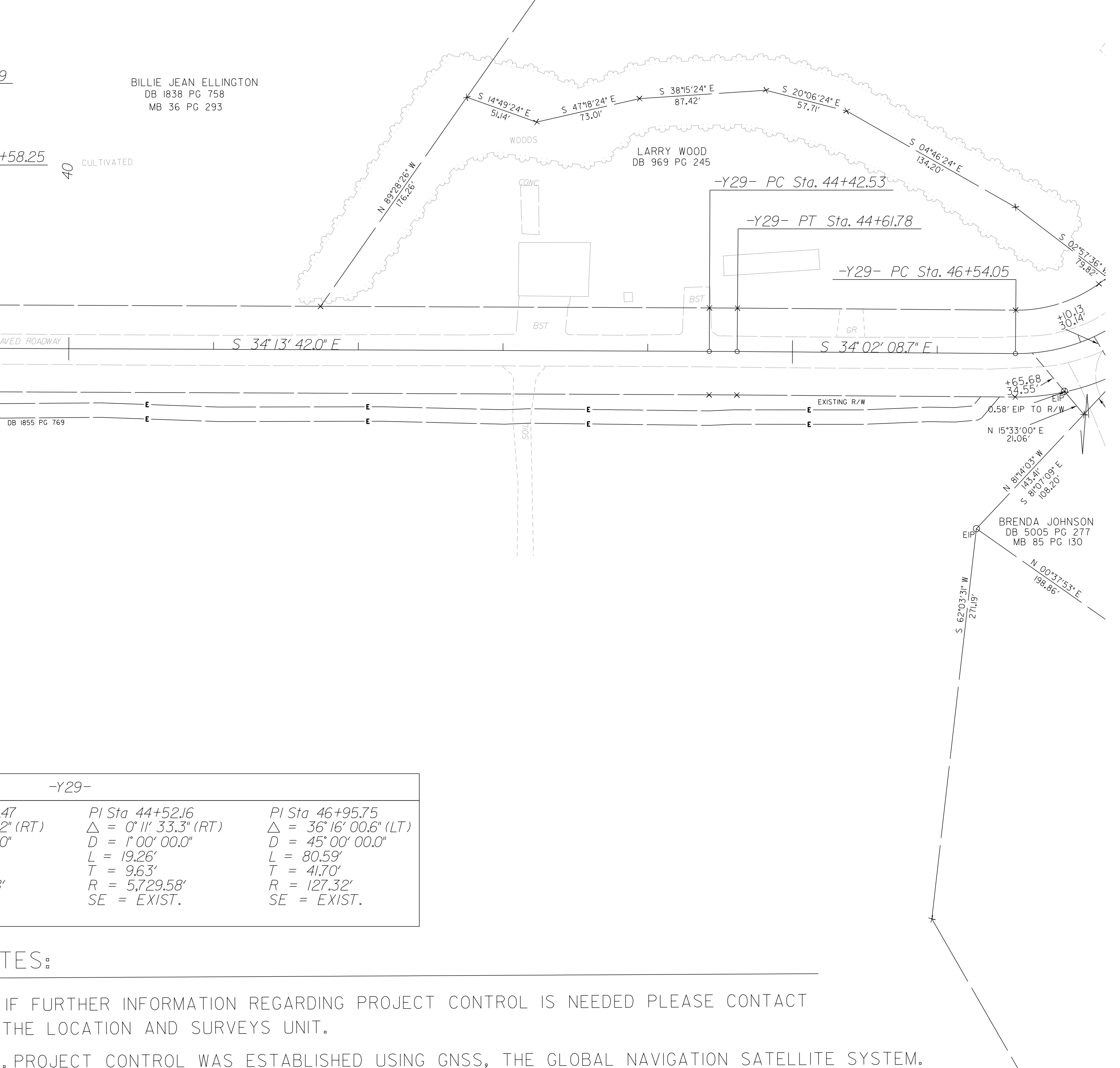
Location and Surveys



I, PARKS H. ICENHOUR JR., a Professional Land Surveyor in the state of North Carolina hereby certify to the best of my knowledge and belief that the following work items (Base map compilation, R/W Staking) performed under my responsible charge meet NCDOT Survey Standards as directed in the NCDOT Location & Surveys guidelines and procedures.

Professional Land Surveyor L-3996 PLS Seal

CHARLES BYRD DB 996 PG 152



-Y29A-	
PI Sta	9+01.39
Δ	= 77° 10' 42.8" (LT)
D	= 38' 11" 49.9'
L	= 202.05'
T	= 119.70'
R	= 150.00'
SE	= 0.06
RUNOFF	= 108'

-Y29-	
PI Sta	32+64.68
Δ	= 3° 43' 18.1" (RT)
D	= 1' 10' 00.0"
L	= 319.00'
T	= 159.56'
R	= 4,911.07'
SE	= 0.02
RUNOFF	= 42'

PI Sta	38+46.47
Δ	= 0° 14' 08.2" (RT)
D	= 1' 00' 00.0"
L	= 23.56'
T	= 11.78'
R	= 5,729.58'
SE	= EXIST.

PI Sta	44+52.16
Δ	= 0° 11' 33.3" (RT)
D	= 1' 00' 00.0"
L	= 19.26'
T	= 9.63'
R	= 5,729.58'
SE	= EXIST.

PI Sta	46+95.75
Δ	= 36° 16' 00.6" (LT)
D	= 45' 00' 00.0"
L	= 80.59'
T	= 41.70'
R	= 127.32'
SE	= EXIST.

NOTES:

- IF FURTHER INFORMATION REGARDING PROJECT CONTROL IS NEEDED PLEASE CONTACT THE LOCATION AND SURVEYS UNIT.
- PROJECT CONTROL WAS ESTABLISHED USING GNSS, THE GLOBAL NAVIGATION SATELLITE SYSTEM.
- RIGHT OF WAY MONUMENTATION ESTABLISHED FEBRUARY 10TH, 2020 TO MARCH 20TH, 2020.

REVISIONS

30-MAR-2020 15:17 C:\work\ccts\15986B\5986B\Roadway\Proj\I-5986B\1s\_rw67.dgn AT GEORGE